



## UNC Charlotte Millennium Campus

- Last modified in 2014
- Strategic research partnerships
  - Bioinformatics
  - Metrology
  - Energy
  - Transportation
  - Cybersecurity



UNIVERSITY OF NORTH CAROLINA  
CHARLOTTE

## UNC Charlotte Human Performance Research

- Department of Applied Physiology, Health, & Clinical Sciences
  - Long-term athlete development & health outcomes
  - Longitudinal injury surveillance using diagnostic ultrasound
  - Healthy living (molecular and integrative myology, resistance training)
  - Prevention, treatment, and rehabilitation
  - Athlete health (wearables, impact of athletics on health, concussion assessment)
  - Workforce development



UNIVERSITY OF NORTH CAROLINA  
**CHARLOTTE**

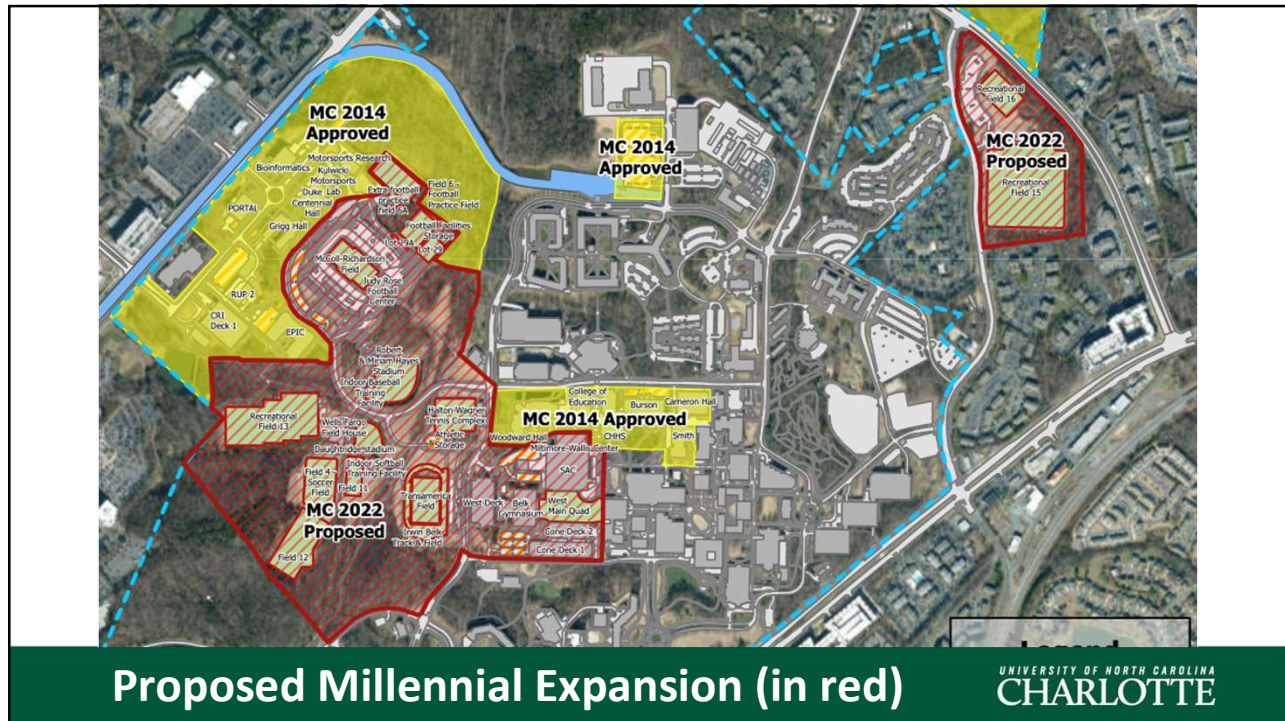
## Human Performance and Exercise Science Partnership Opportunities

- US Performance Center
  - Human performance center of excellence and research
  - US Olympic & Paralympic training facilities
- Ground lease for private development
- Investment to enhance facilities
- Student engagement opportunities (internships, research, athlete training)
- Regional economic impact



UNIVERSITY OF NORTH CAROLINA  
**CHARLOTTE**

APPENDIX E



## Expansion of Millennial Campus – University of North Carolina at Charlotte

### ISSUE OVERVIEW

G.S. 116-198.34 grants the University of North Carolina Board of Governors authority to designate real property as a millennial campus when recommended by the president. It states that “designation shall be based on an express finding by the Board of Governors that the institution desiring to create a millennial campus has the administrative and fiscal capability to create and maintain such a campus and provided further, that the Board of Governors has found that the creation of the constituent institution’s millennial campus will enhance the institution’s research, teaching, and service missions as well as enhance the economic development of the region served by the institution.”

UNC Charlotte Board of Trustees is requesting an expansion of its millennial campus by 170 acres to facilitate partnership opportunities with the private sector to enhance the university’s research, teaching, and service missions, and to continue to enhance the economic development of the region. The expansion includes 145 acres on the western-central side of campus and 25 acres on the eastern edge of campus. The designation of the 170 acres also includes the following buildings, improvements, and appurtenant facilities:

- Richardson Stadium complex and adjoining properties
- Practice fields (Fields 6 and 6A) and nearby practice field storage facilities
- Barnhardt Student Activities Center (SAC) and adjoining properties
- Belk Gymnasium
- Belk Track and Field Center and adjoining properties
- Halton-Wagner Tennis Complex and adjoining properties
- Daughtridge Stadium
- Wells Fargo Field House
- Indoor Softball Training Facility
- Phillips Field (Field 3)
- Field 4 (Soccer)
- Field 5 (Hammer Throw)
- Recreation Fields 11, 12, 13, 15, and 16, and supporting properties
- Northeast Recreation Field Complex (NRFC) Fieldhouse and storage shed
- Parking Lot 102
- Indoor Baseball Training Facility
- Robert and Miriam Hayes Stadium

The Board of Governors approved the establishment of a millennial campus at UNC Charlotte in January 2002 which included 100 acres. The Board approved expansions to the millennial campus in June 2007 and September 2014, which included 1.5 acres and 105.87 acres respectively. The request to include an additional 170 acres will expand the millennial campus to 377.37 total acres. The millennial campus continues to meet the university’s objectives of creating intellectual capital through technology research with relevance to the regional economy, leveraging the university’s unique role in attracting and developing talent for the region, and building on interdisciplinary strengths. The millennial campus supports the university’s research efforts that have led to over 150 development partnerships and startups, more than \$600 million in research awards, and the creation of more than 246 patents.

## APPENDIX E

The millennial campus expansion will support the development of human performance and exercise science research and teaching and to support the university's existing and future partnerships. The university currently partners with a technology, data, and science-driven human performance organization that has the potential to significantly impact the region's economy through research, state-of-the-art human performance training and diagnostic equipment, and numerous competitions and events. Expanding the millennial campus designation will enhance the university's ability to finance collaborative projects and partner with industry on innovative ventures.

The millennial campus expansion aligns with the following goals included in the university's strategic plan, "Shaping What's Next":

- achieving national prominence as an emerging, top-tier research university;
- fulfilling the university's role as North Carolina's urban research university to benefit the city, region and beyond by co-producing transformative solutions to societal issues and challenges;
- and expanding the use of community programs and activities, including athletics, performing arts, design, gardens, and campus, to enhance the University's reputation, grow enrollment, and bolster engagement.

UNC Charlotte is currently updating their 2010 master plan to align with the strategic plan. The master plan will prioritize space optimization over new construction to address growth and study opportunities to develop the millennial campus through strategic partnerships.

The millennial campus expansion was approved by the UNC Charlotte Board of Trustees on December 1, 2022.

### **RECOMMENDATION**

It is recommended that the Board of Governors approve the millennial campus designation with the understanding that specific projects, leases, and other actions related to the millennial campus, including those on property owned by an endowment board, shall be subject to Board's approval unless otherwise authorized by law or under delegated authority.



APPENDIX E  
Exhibit 1



UNC Charlotte  
Center City  
Building

MC 2014  
Approved

Source: Esri, Maxar,  
Earthstar Geographics, and  
the GIS User Community

MC 2014  
Approved

Recreational  
Field 16

MC 2022  
Proposed

Recreational  
Field 15

MC 2014  
Approved

MC 2014  
Approved

MC 2014 Approved

MC 2022  
Proposed

Legend

- MC 2022 Proposed
- MC 2014 Approved
- Campus Boundary
- Campus Buildings
- Light Rail

Proposed Millennial  
Campus Map

