



MEETING OF THE BOARD OF GOVERNORS
Committee on Budget and Finance

January 25, 2018 at 2:30 p.m.
University of North Carolina General Administration
Center for School Leadership Development, Board Room
Chapel Hill, North Carolina

AGENDA

- B-1. [Tuition and Fee Presentation](#) Rick Whitfield and Nathan Knuffman
- B-2. [Millennial Campus Designation – UNCW](#) Will Johnson
- B-3. [Student Health Insurance Update](#) Brian Usischon
- B-4. Other Business Temple Sloan
- B-5. Adjourn

AGENDA ITEM

B-1. Tuition and Fee Presentation Rick Whitfield/Nathan Knuffman

Situation: Campus tuition and fee proposals are presented for the Board’s review. The Board will take action at the March meeting on recommendations for tuition and fee rates for the 2018-19 academic year.

Background: G.S. 116-143 requires that the Board of Governors fix the tuition and fees, not inconsistent with the actions of the General Assembly, at the constituent institutions of the University of North Carolina.

Assessment: Campuses have submitted 2018-19 tuition proposals in accordance with legislative and UNC-GA guidelines.

Action: This item is for discussion only.



2018-19 TUITION AND FEE PROPOSALS

BOG Committee on Budget and Finance

January 25, 2018

Presentation Outline

- **Annual Guidance to the Campuses**
- **Historical Tuition and Fee Averages**
- **2018-19 Tuition Proposals**
- **2018-19 Fee Proposals**
- **Summary of 2018-19 Proposals
Compared with 2017-18 Rates**
- **Comparison to BOG-Approved Peers**

Annual Guidance to the Campuses

- No tuition increases are allowed for resident undergraduates.
- Combined tuition and fee rates for undergraduate residents shall remain in the bottom quartile of an institution's public peers.
- Rates for nonresident undergraduate students should be market driven and reflect the full cost of providing nonresidents with a quality education.
- Graduate and professional schools shall continue to establish rates consistent with each program's unique market and academic requirements.
- Mandatory student fees are capped at a maximum of 3% annual increase. All fee increase proposals must be accompanied by an expenditure plan, including a description of why alternative sources or expenditure reductions are insufficient for addressing the needs of the fee-supported activity.

Historical Tuition and Fee Averages

Academic Year	Average Increases		
	Undergraduate Resident Tuition	Undergraduate Nonresident Tuition	Mandatory Fees *
2014-15	0.0%	7.8%	3.7%
2015-16	3.8%	2.6%	5.2%
2016-17	3.6%	2.6%	4.7%
2017-18	2.0%	2.0%	2.8%
2018-19	(10.7%)	(9.3%)	1.3%

If the NC Promise campuses are excluded from the 2018-19 calculation, the average increase for resident students would be 0% and for nonresident tuition, it would be 0.9%.

** For 2018-19, five campus proposals have a zero increase or a net reduction in mandatory fees.*

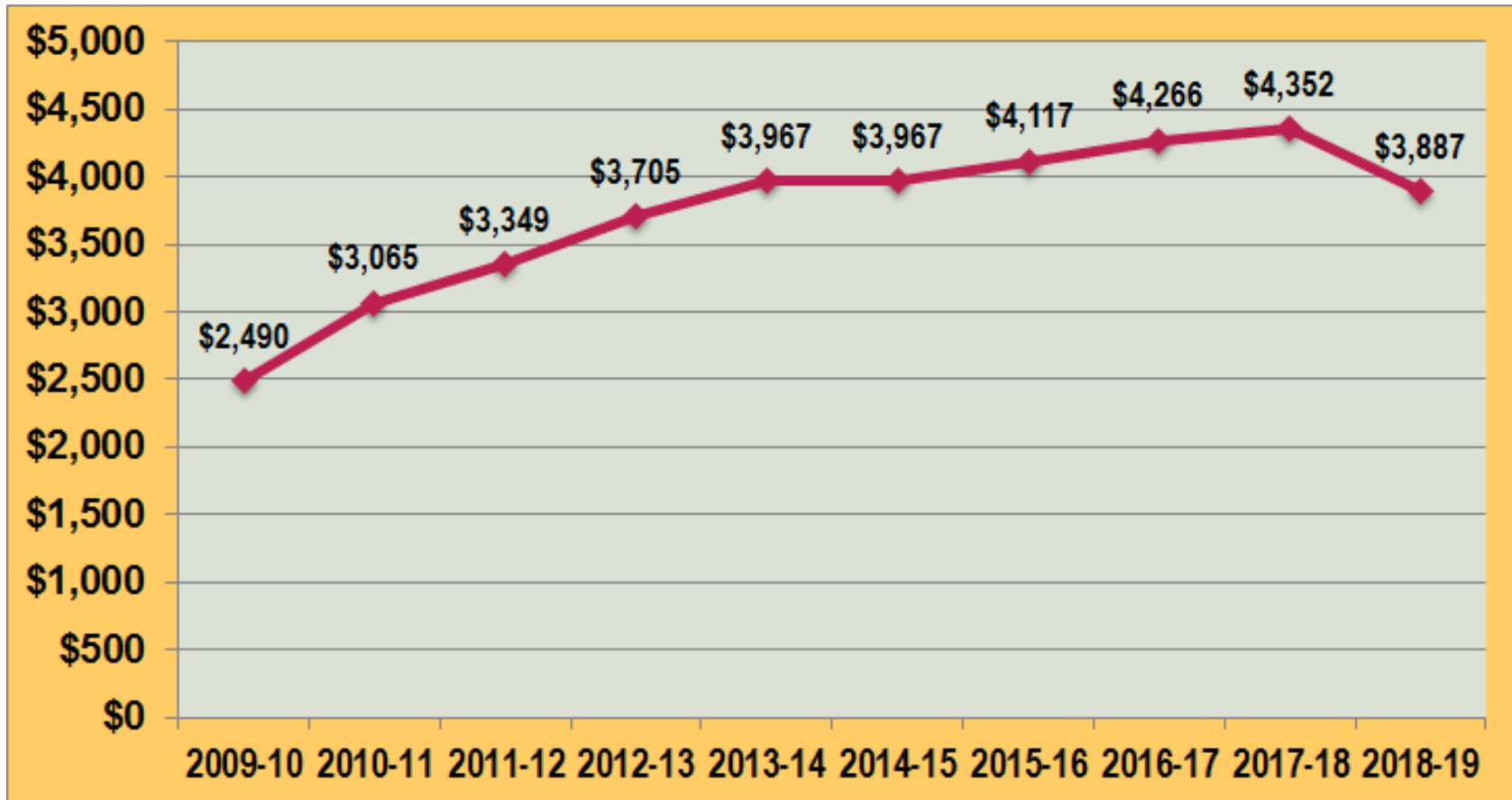
2018-19 Tuition Proposals

2018-19 Tuition Proposals (UG Resident)

Institution	2017-18 Tuition	2018-19 Rate Change	2018-19 Proposed Rates	%
NCSU	\$6,535.00	\$0.00	\$6,535.00	0.0%
UNC-CH	7,019.00	0.00	7,019.00	0.0%
ECU	4,452.00	0.00	4,452.00	0.0%
NC A&T	3,540.00	0.00	3,540.00	0.0%
UNCC	3,812.00	0.00	3,812.00	0.0%
UNCG	4,422.00	0.00	4,422.00	0.0%
ASU	4,242.00	0.00	4,242.00	0.0%
FSU	2,982.00	0.00	2,982.00	0.0%
NCCU	3,728.00	0.00	3,728.00	0.0%
UNCP	3,602.00	(2,602.00)	1,000.00	(72.2%)
UNCW	4,443.00	0.00	4,443.00	0.0%
WCU	3,971.00	(2,971.00)	1,000.00	(74.8%)
WSSU	3,401.00	0.00	3,401.00	0.0%
UNCA	4,122.00	0.00	4,122.00	0.0%
ECSU	2,856.00	(1,856.00)	1,000.00	(65.0%)
UNCSA	6,497.00	0.00	6,497.00	0.0%
Average	4,351.50	(464.31)	3,887.19	(10.7%)

2018-19 Tuition Proposals

UNC Average Undergraduate Resident Tuition



2018-19 Tuition Proposals (UG Nonresident)

Institution	2017-18 Tuition	2018-19 Rate Change	2018-19 Proposed Rates	%
NCSU	\$24,883.00	\$995.00	\$25,878.00	4.0%
UNC-CH	32,602.00	600.00	33,202.00	1.8%
ECU	20,729.00	0.00	20,729.00	0.0%
NC A&T	16,430.00	320.00	16,750.00	1.9%
UNCC	17,246.00	0.00	17,246.00	0.0%
UNCG	19,581.00	0.00	19,581.00	0.0%
ASU	19,049.00	0.00	19,049.00	0.0%
FSU	14,590.00	0.00	14,590.00	0.0%
NCCU	16,435.00	0.00	16,435.00	0.0%
UNCP	15,193.00	(10,193.00)	5,000.00	(67.1%)
UNCW	18,508.00	0.00	18,508.00	0.0%
WCU	14,364.00	(9,364.00)	5,000.00	(65.2%)
WSSU	13,648.00	0.00	13,648.00	0.0%
UNCA	20,845.00	0.00	20,845.00	0.0%
ECSU	16,000.00	(11,000.00)	5,000.00	(68.8%)
UNCSA	22,240.00	400.00	22,640.00	1.8%
Average	18,896.44	(1,765.13)	17,131.31	(9.3%)

2018-19 Tuition Proposals (Grad Resident)

Institution	2017-18 Tuition	2018-19 Rate Change	2018-19 Proposed Rates	%
NCSU	\$8,492.00	\$425.00	\$8,917.00	5.0%
UNC-CH	9,943.00	300.00	10,243.00	3.0%
ECU	4,749.00	0.00	4,749.00	0.0%
NC A&T	4,745.00	0.00	4,745.00	0.0%
UNCC	4,337.00	0.00	4,337.00	0.0%
UNCG	5,219.00	0.00	5,219.00	0.0%
ASU	4,839.00	0.00	4,839.00	0.0%
FSU	3,437.97	0.00	3,437.97	0.0%
NCCU	4,740.00	0.00	4,740.00	0.0%
UNCP	3,820.00	180.00	4,000.00	4.7%
UNCW	4,626.00	93.00	4,719.00	2.0%
WCU	4,435.00	0.00	4,435.00	0.0%
WSSU	3,872.00	0.00	3,872.00	0.0%
UNCA	4,914.00	0.00	4,914.00	0.0%
ECSU	3,375.43	0.00	3,375.43	0.0%
UNCSA	8,396.00	400.00	8,796.00	4.8%
Average	5,246.28	87.38	5,333.65	1.7%

2018-19 Tuition Proposals (Grad Nonresident)

Institution	2017-18 Tuition	2018-19 Rate Change	2018-19 Proposed Rates	%
NCSU	\$23,967.00	\$1,438.00	\$25,405.00	6.0%
UNC-CH	27,154.00	300.00	27,454.00	1.1%
ECU	17,898.00	0.00	17,898.00	0.0%
NC A&T	17,150.00	245.00	17,395.00	1.4%
UNCC	17,771.00	0.00	17,771.00	0.0%
UNCG	18,937.00	0.00	18,937.00	0.0%
ASU	18,271.00	0.00	18,271.00	0.0%
FSU	14,503.38	0.00	14,503.38	0.0%
NCCU	17,694.00	0.00	17,694.00	0.0%
UNCP	14,586.00	688.00	15,274.00	4.7%
UNCW	17,834.00	714.00	18,548.00	4.0%
WCU	14,842.00	0.00	14,842.00	0.0%
WSSU	13,987.00	0.00	13,987.00	0.0%
UNCA	21,236.00	0.00	21,236.00	0.0%
ECSU	16,437.13	0.00	16,437.13	0.0%
UNCSA	22,103.00	700.00	22,803.00	3.2%
Average	18,398.16	255.31	18,653.47	1.4%

2018-19 Tuition Proposals

Estimated Revenues Generated by Tuition Increases

<u>Undergraduate</u>	2018-19
Residents	
(new students)	\$0
Nonresidents	\$4,984,804
<u>Graduate</u>	
Residents	\$4,154,017
Nonresidents	\$5,426,277
Total	\$14,565,098

Proposed Uses: Inflationary Adjustments, Faculty & Staff Retention, Expanded Institutional Opportunities, Student Services, Academic Support, Technology Improvements, Graduate Assistantships, Need-based Aid, and Merit-based Aid

2018-19 Fee Proposals

2018-19 Fee Proposals

Mandatory Fees

- Athletics
- Health Services
- Student Activities
- Educational and Technology
- Campus Security (no increase allowed)
- Debt Service (*Debt Service fees are subject to the 3% cap and are addressed by the Board when approving capital projects paid from non-appropriated sources.*)

2018-19 Fee Proposals

Determining Mandatory Fees

- Institutions rely entirely on student fees (without any direct state appropriations) to finance a number of activities, services, and facilities.
- Authority to spend fee revenue is held by the campus or campus program for which the fee was established.

2018-19 Fee Proposals

■ Who Pays Mandatory Fees?

- All students (residents, nonresidents, undergraduates, graduates, summer school students)
- Fees are pro-rated for part-time students
- Distance education students pay subset of mandatory fees (education and technology, campus security, and association of student government)

■ UNC Policy Guides Use of All Student Fees (mandatory and special fees)

- “Fees will be charged only for limited, dedicated purposes and shall not be used to defray the costs of general academic and administrative operations of campuses...”

2018-19 Fee Proposals

Factors that Influence Fees

- Fixed cost increases (salaries, retirement, and health plan)
- Economies of scale
- Financial condition of the enterprise
- Must be used for the purpose for which the fee is authorized

2018-19 Mandatory Fee Proposals

Campus	2017-18 Mandatory Fees	2018-19 Rate Change	2018-19 Total Proposed Fees	%
NCSU	\$2,329.60	\$31.00	\$2,360.60	1.3%
UNC-CH	1,763.04	(24.21)	1,738.83	(1.4%)
ECU	2,521.00	45.00	2,566.00	1.8%
NC A&T	2,880.31	85.50	2,965.81	3.0%
UNCC	3,021.00	21.00	3,042.00	0.7%
UNCG	2,716.00	81.00	2,797.00	3.0%
ASU	2,917.00	55.00	2,972.00	1.9%
FSU	2,202.00	66.00	2,268.00	3.0%
NCCU	2,555.21	65.00	2,620.21	2.5%
UNCP	2,353.69	63.58	2,417.27	2.7%
UNCW	2,557.74	0.00	2,557.74	0.0%
WCU	2,788.00	0.00	2,788.00	0.0%
WSSU	2,450.16	(37.00)	2,413.16	(1.5%)
UNCA	2,881.00	0.00	2,881.00	0.0%
ECSU	2,130.03	63.87	2,193.90	3.0%
UNCSA	2,395.00	20.00	2,415.00	0.8%
Average	2,528.80	33.48	2,562.28	1.3%

2018-19 Fee Proposals (Athletics)

Athletics fee revenue supports:

- **Scholarships**
- **Salaries**
- **Travel**
- **Maintenance of athletic facilities**
- **Operation of athletic facilities**

Institution	2017-18 Rate	2018-19 Rate Change	2018-19 Proposed Rate	%
NCSU	\$232.00	\$0.00	\$232.00	0.0%
UNC-CH	279.00	0.00	279.00	0.0%
ECU	723.00	0.00	723.00	0.0%
NC A&T	830.00	15.00	845.00	1.8%
UNCC	824.00	0.00	824.00	0.0%
UNCG	739.00	22.00	761.00	3.0%
ASU	760.00	0.00	760.00	0.0%
FSU	718.00	0.00	718.00	0.0%
NCCU	807.00	40.00	847.00	5.0%
UNCP	739.52	8.00	747.52	1.1%
UNCW	749.55	0.00	749.55	0.0%
WCU	756.00	0.00	756.00	0.0%
WSSU	745.00	0.00	745.00	0.0%
UNCA	830.00	0.00	830.00	0.0%
ECSU	815.00	63.87	878.87	7.8%
UNCSCA	N/A	N/A	N/A	N/A
Average	703.14	9.92	713.06	1.4%

2018-19 Fee Proposals (Health Services)

Health Services fee revenue supports:

- *Health and medical services and supplies for students*
- *Maintenance and operation of health centers*
- *Salaries associated with health center operations*

Institution	2017-18 Rate	2018-19 Rate Change	2018-19 Proposed Rate	%
NCSU	\$392.00	\$15.00	\$407.00	3.8%
UNC-CH	381.10	19.05	400.15	5.0%
ECU	263.00	0.00	263.00	0.0%
NC A&T	338.50	0.00	338.50	0.0%
UNCC	236.00	7.00	243.00	3.0%
UNCG	293.00	9.00	302.00	3.1%
ASU	325.00	0.00	325.00	0.0%
FSU	215.00	22.00	237.00	10.2%
NCCU	242.66	25.00	267.66	10.3%
UNCP	175.00	15.00	190.00	8.6%
UNCW	219.00	0.00	219.00	0.0%
WCU	306.00	0.00	306.00	0.0%
WSSU	267.00	0.00	267.00	0.0%
UNCA	368.00	0.00	368.00	0.0%
ECSU	255.03	0.00	255.03	0.0%
UNCSA	882.00	0.00	882.00	0.0%
Average	322.39	7.00	329.40	2.2%

2018-19 Fee Proposals (Student Activities)

Student Activities fee revenue supports:

- *Maintenance and operation of student unions and intramural facilities*
- *Student organizations*
- *Newspapers, yearbooks, and entertainment programs*

The rates shown are for undergraduate students. NCCU and UNC-CH charge graduate students a different rate.

Institution	2017-18 Rate	2018-19 Rate Change	2018-19 Proposed Rate	%
NCSU	\$663.32	\$16.00	\$679.32	2.4%
UNC-CH	391.23	6.74	397.97	1.7%
ECU	649.00	45.00	694.00	6.9%
NC A&T	666.50	47.75	714.25	7.2%
UNCC	613.00	19.00	632.00	3.1%
UNCG	513.00	37.00	550.00	7.2%
ASU	646.00	0.00	646.00	0.0%
FSU	543.00	22.00	565.00	4.1%
NCCU	476.40	0.00	476.40	0.0%
UNCP	653.40	26.44	679.84	4.0%
UNCW	687.95	0.00	687.95	0.0%
WCU	618.00	0.00	618.00	0.0%
WSSU	530.70	0.00	530.70	0.0%
UNCA	768.00	0.00	768.00	0.0%
ECSU	703.00	0.00	703.00	0.0%
UNCSA	748.00	0.00	748.00	0.0%
Average	616.91	13.75	630.65	2.2%

2018-19 Fee Proposals (Ed & Tech)

Educational and Technology fee revenues support:

- **Specialized instructional supplies and services**
- **Scientific and information technology equipment**

** UNCP is rolling its Administrative Computing Fee of \$85 into the Ed & Tech fee. The net change for students would be \$21.14.*

Institution	2017-18 Rate	2018-19 Rate Change	2018-19 Proposed Rate	%
NCSU	\$439.28	\$0.00	\$439.28	0.0%
UNC-CH	444.86	0.00	444.86	0.0%
ECU	395.00	0.00	395.00	0.0%
NC A&T	426.31	22.75	449.06	5.3%
UNCC	582.00	10.00	592.00	1.7%
UNCG	433.00	13.00	446.00	3.0%
ASU	576.00	0.00	576.00	0.0%
FSU	360.00	22.00	382.00	6.1%
NCCU	428.15	0.00	428.15	0.0%
UNCP *	422.77	21.14	443.91	5.0%
UNCW	494.24	0.00	494.24	0.0%
WCU	544.00	0.00	544.00	0.0%
WSSU	416.46	0.00	416.46	0.0%
UNCA	490.00	0.00	490.00	0.0%
ECSU	326.00	0.00	326.00	0.0%
UNCSA	684.00	20.00	704.00	2.9%
Average	466.38	6.81	473.19	1.5%

2018-19 Fee Proposals (Campus Security)

- **The Campus Security fee, approved by the Board in 2015, will remain at \$30 for 2018-19. Revenues from this fee will help to improve student safety.**
- **The fee revenues are predominately used for personnel, such as Title IX coordinators, campus security officers, and on-campus investigators.**
- **A portion (\$4) of the \$30 fee is transferred to the UNC System Office to support onsite active shooter training for campuses, as well as campus safety and emergency operations personnel.**

2018-19 Fee Proposals (Debt Service)

Debt service fee revenue supports:

- *Cost of principal and interest for self-liquidating capital projects approved by the Board of Governors and the General Assembly*

Approval process for self-liquidating projects:

- *Authorization of the project by the Board of Governors*
- *Self-liquidating bill approved by legislature*
- *Approval of the debt issuance by the Board of Governors*

Institution	2017-18 Rate	2018-19 Rate Change	2018-19 Proposed Rate	%
NCSU	\$572.00	\$0.00	\$572.00	0.0%
UNC-CH	185.85	0.00	185.85	0.0%
ECU	460.00	0.00	460.00	0.0%
NC A&T	588.00	0.00	588.00	0.0%
UNCC	735.00	(15.00)	720.00	(2.0%)
UNCG	707.00	0.00	707.00	0.0%
ASU	579.00	55.00	634.00	9.5%
FSU	335.00	0.00	335.00	0.0%
NCCU	570.00	0.00	570.00	0.0%
UNCP	247.00	(7.00)	240.00	(2.8%)
UNCW	376.00	0.00	376.00	0.0%
WCU	523.00	0.00	523.00	0.0%
WSSU	460.00	(37.00)	423.00	(8.0%)
UNCA	394.00	0.00	394.00	0.0%
ECSU	0.00	0.00	0.00	0.0%
UNCSA	0.00	0.00	0.00	0.0%
Average	420.74	(0.25)	420.49	(0.1%)

2018-19 Fee Proposals (Special Fees)

■ What are Special Fees and Who Pays?

- Special fees are for programs that have specialized instructional needs, e.g., programs in health affairs, law, business, engineering, and others.
- Special Fees provide funds for specific needs that are not financed from other revenue sources, e.g., dental equipment.
- Special Fees are charged only to students that participate in programs or activities financed from those fees.
- These program needs are expensive and occur in curricula where students must obtain a “competitive edge” to acquire highly desirable jobs upon graduation.

2018-19 Fee Proposals (Special Fees)

Institution	Special Fee	2017-18 Rate	2018-19 Rate Change	2018-19 Proposed Rate	%
ECU	Dental Preclinical Educational Materials (3rd year students)	\$0.00	\$360.00	\$360.00	New
ECSU	Flight Lab 115L - Private	6,500.00	0.00	6,500.00	*
ECSU	Flight Lab 225L - Cross Country	6,000.00	0.00	6,000.00	*
ECSU	Flight Lab FLT 325L - Instrument	5,000.00	0.00	5,000.00	*
ECSU	Flight Lab FLT 335L - Commercial	7,500.00	0.00	7,500.00	*
ECSU	Flight Lab 345L - Multi-Engine	2,500.00	0.00	2,500.00	*
ECSU	Flight Lab 425L - CFI	4,000.00	0.00	4,000.00	*
ECSU	Flight Lab 435L - CFII	1,500.00	0.00	1,500.00	*
ECSU	Flight Lab 445L - MEI	3,000.00	0.00	3,000.00	*
UNCA	Engineering	0.00	1,000.00	1,000.00	New

** A review of ECSU's Aviation Science Program was conducted by the UNC System Office and special fees were recommended for courses that involved actual flight training. The flight fees were approved by ECSU's BOT in 2014 and have been charged to students since the 2015-16 academic year. These fees are submitted to BOG for approval during this tuition and fee cycle.*

2018-19 Fee Proposals (Special Fees-cont.)

Institution	Special Fee	2017-18 Rate	2018-19 Rate Change	2018-19 Proposed Rate	%
UNC-CH	Undergraduate Business Program Expansion - Major	0.00	2,000.00	2,000.00	New
UNC-CH	Undergraduate Business Program Expansion - Minor	0.00	1,000.00	1,000.00	New
UNC-CH	Computer Science Program Enhancement	0.00	300.00	300.00	New
UNC-CH	Dentistry Instrument Management - Dental Graduate	0.00	1,000.00	1,000.00	New
UNC-CH	Nursing Practicum - Undergraduate	172.20	3.00	175.20	1.7%
UNC-CH	Nursing Healthcare Simulation Training - Undergraduate	90.00	1.00	91.00	1.1%
UNC-CH	Biomedical Engineering Program Enhancement	500.00	500.00	1,000.00	100.0%
UNCG	Media Studies	0.00	100.00	100.00	New
UNCW	Professional MBA	0.00	600.00	600.00	New
UNCW	MS Data Science	0.00	1,500.00	1,500.00	New

2018-19 Fee Proposals (Application Fees)

Institution	Application Fee	2017-18 Rate	2018-19 Rate Change	2018-19 Proposed Rate	%
NC A&T	Undergraduate	\$55.00	\$5.00	\$60.00	9.1%
NCSU	Non-Degree Studies	35.00	5.00	40.00	14.3%
UNC-CH	Graduate	87.50	2.50	90.00	2.9%
UNC-CH	School of Education - MSA & MED	0.00	90.00	90.00	New
UNCP	Undergraduate and Graduate	45.00	10.00	55.00	22.2%

Application fees are charged to individuals submitting applications for admission as students to the University of North Carolina to offset the cost of handling applications and to provide funds for recruiting students.

***Summary of 2018-19
Proposals Compared with
2017-18 Rates***

Summary of 2018-19 Fee Proposals

Proposed 2018-19 General Fee Changes											
Campus	2017-18 Mandatory Fees	Athletics	Health Services	Student Activities	Ed & Tech	Campus Security	Debt Service	Other Fees (applies to all students)	Proposed 2018-19 Total Fees	\$ Change	% Change
NCSU	\$2,329.60	\$0.00	\$15.00	\$16.00	\$0.00	\$0.00	\$0.00		\$2,360.60	\$31.00	1.3%
UNC-CH	1,763.04	0.00	\$19.05	6.74	0.00	0.00	0.00	(50.00)	1,738.83	(24.21)	(1.4%)
ECU	2,521.00	0.00	0.00	45.00	0.00	0.00	0.00		2,566.00	45.00	1.8%
NC A&T	2,880.31	15.00	0.00	47.75	22.75	0.00	0.00		2,965.81	85.50	3.0%
UNCC	3,021.00	0.00	7.00	19.00	10.00	0.00	(15.00)		3,042.00	21.00	0.7%
UNCG	2,716.00	22.00	9.00	37.00	13.00	0.00	0.00		2,797.00	81.00	3.0%
ASU	2,917.00	0.00	0.00	0.00	0.00	0.00	55.00		2,972.00	55.00	1.9%
FSU	2,202.00	0.00	22.00	22.00	22.00	0.00	0.00		2,268.00	66.00	3.0%
NCCU	2,555.21	40.00	25.00	0.00	0.00	0.00	0.00		2,620.21	65.00	2.5%
UNCP	2,353.69	8.00	15.00	26.44	106.14	0.00	(7.00)	(85.00)	2,417.27	63.58	2.7%
UNCW	2,557.74	0.00	0.00	0.00	0.00	0.00	0.00		2,557.74	0.00	0.0%
WCU	2,788.00	0.00	0.00	0.00	0.00	0.00	0.00		2,788.00	0.00	0.0%
WSSU	2,450.16	0.00	0.00	0.00	0.00	0.00	(37.00)		2,413.16	(37.00)	(1.5%)
UNCA	2,881.00	0.00	0.00	0.00	0.00	0.00	0.00		2,881.00	0.00	0.0%
ECSU	2,130.03	63.87	0.00	0.00	0.00	0.00	0.00		2,193.90	63.87	3.0%
UNCSA	2,395.00	N/A	0.00	0.00	20.00	0.00	0.00		2,415.00	20.00	0.8%
Average	2,528.80	9.92	7.00	13.75	12.12	0.00	(0.25)	(67.50)	2,562.28	33.48	1.3%

The Other Fees column includes changes to the Administrative Computing Fee. UNC-CH is eliminating this fee. UNCP is proposing to roll this fee into the Ed & Tech fee.

Summary of 2018-19 UG Resident Proposals

Campus	2017-18 Total Tuition and Fees	2018-19 Proposed Changes				
		Tuition Change	Fee Change	Total Tuition and Fees	\$ Change	% Change
NCSU	\$8,864.60	\$0.00	\$31.00	\$8,895.60	\$31.00	0.3%
UNC-CH	8,782.04	0.00	(24.21)	8,757.83	(24.21)	(0.3%)
ECU	6,973.00	0.00	45.00	7,018.00	45.00	0.6%
NC A&T	6,420.31	0.00	85.50	6,505.81	85.50	1.3%
UNCC	6,833.00	0.00	21.00	6,854.00	21.00	0.3%
UNCG	7,138.00	0.00	81.00	7,219.00	81.00	1.1%
ASU	7,159.00	0.00	55.00	7,214.00	55.00	0.8%
FSU	5,184.00	0.00	66.00	5,250.00	66.00	1.3%
NCCU	6,283.21	0.00	65.00	6,348.21	65.00	1.0%
UNCP	5,955.69	(2,602.00)	63.58	3,417.27	(2,538.42)	(42.6%)
UNCW	7,000.74	0.00	0.00	7,000.74	0.00	0.0%
WCU	6,759.00	(2,971.00)	0.00	3,788.00	(2,971.00)	(44.0%)
WSSU	5,851.16	0.00	(37.00)	5,814.16	(37.00)	(0.6%)
UNCA	7,003.00	0.00	0.00	7,003.00	0.00	0.0%
ECSU	4,986.03	(1,856.00)	63.87	3,193.90	(1,792.13)	(35.9%)
UNCSA	8,892.00	0.00	20.00	8,912.00	20.00	0.2%
Average	6,880.30	(464.31)	33.48	6,449.47	(430.83)	(6.3%)

Summary of 2018-19 UG Nonresident Proposals

Campus	2017-18 Total Tuition and Fees	2018-19 Proposed Changes				
		Tuition Increase	Fee Increase	Total Tuition and Fees	\$ Change	% Change
NCSU	\$27,212.60	\$995.00	\$31.00	\$28,238.60	\$1,026.00	3.8%
UNC-CH	34,365.04	600.00	(24.21)	34,940.83	575.79	1.7%
ECU	23,250.00	0.00	45.00	23,295.00	45.00	0.2%
NC A&T	19,310.31	320.00	85.50	19,715.81	405.50	2.1%
UNCC	20,267.00	0.00	21.00	20,288.00	21.00	0.1%
UNCG	22,297.00	0.00	81.00	22,378.00	81.00	0.4%
ASU	21,966.00	0.00	55.00	22,021.00	55.00	0.3%
FSU	16,792.00	0.00	66.00	16,858.00	66.00	0.4%
NCCU	18,990.21	0.00	65.00	19,055.21	65.00	0.3%
UNCP	17,546.69	(10,193.00)	63.58	7,417.27	(10,129.42)	(57.7%)
UNCW	21,065.74	0.00	0.00	21,065.74	0.00	0.0%
WCU	17,152.00	(9,364.00)	0.00	7,788.00	(9,364.00)	(54.6%)
WSSU	16,098.16	0.00	(37.00)	16,061.16	(37.00)	(0.2%)
UNCA	23,726.00	0.00	0.00	23,726.00	0.00	0.0%
ECSU	18,130.03	(11,000.00)	63.87	7,193.90	(10,936.13)	(60.3%)
UNCSA	24,635.00	400.00	20.00	25,055.00	420.00	1.7%
Average	21,425.24	(1,765.13)	33.48	19,693.60	(1,731.64)	(8.1%)

Comparisons to BOG-Approved Peers

Comparisons to BOG-Approved Peers

Institution	Undergraduate Students	
	Resident Rank	Nonresident Rank
ASU	18 of 19	6 of 19
ECU	18 of 19	11 of 19
ECSU	15 of 16	10 of 16
FSU	17 of 17	11 of 17
NC A&T	15 of 18	12 of 18
NCCU	16 of 17	7 of 17
NCSU	15 of 17	16 of 17
UNCA	14 of 15	6 of 15
UNC-CH	11 of 11	7 of 11
UNCC	16 of 18	12 of 18
UNCG	17 of 19	13 of 19
UNCP	16 of 19	10 of 19
UNCW	18 of 18	13 of 18
UNCSA	13 of 14	13 of 14
WCU	16 of 18	10 of 18
WSSU	15 of 17	13 of 17

Source: IPEDS

Campuses are meeting the Board's requirement for undergraduate resident tuition to remain in the lowest quartile of public peer institutions.

Rank was determined by comparing **2017-18** tuition and fees of UNC campuses to **2016-17** tuition and fees of their public peer institutions.

UNCSA's comparison includes public and private institutions.

THANK YOU

CONNECT



www.northcarolina.edu



[uncsystem](https://www.facebook.com/uncsystem)



[@UNC_system](https://twitter.com/UNC_system)



[@UNC_system](https://www.instagram.com/UNC_system)

QUESTIONS?

CONNECT



www.northcarolina.edu



[uncsystem](https://www.facebook.com/uncsystem)



[@UNC_system](https://twitter.com/UNC_system)



[@UNC_system](https://www.instagram.com/UNC_system)

AGENDA ITEM

B-2. Millennial Campus Designation – UNCWWill Johnson

Situation: The Board of Trustees of the University of North Carolina Wilmington has requested that the Board of Governors designate as a Millennial Campus approximately 21.79 acres on a single site for new student housing, dining, and parking.

Background: G.S. 116-198 Article 21B: The Centennial Campus, the Horace Williams Campus, and the Millennial Campuses Financing Act define the process for seeking the Millennial Campus designation. The legislation states that the Board of Governors may act on recommendations by the president of the University of North Carolina after consultation with the chancellor and the Board of Trustees of a constituent institution to designate real property held by, or to be acquired by, a constituent institution as a Millennial Campus of the institution.

That designation shall be based on an express finding by the Board of Governors that the institution desiring to create a Millennial Campus has the administrative and fiscal capability to create and maintain such a campus. Furthermore, the Board of Governors has found that creating the constituent institution's Millennial Campus will enhance the university's research, teaching, and service missions, as well as the economic development of the region served by the institution.

Assessment: The Millennial Campus concept has been widely and successfully used by NCSU, UNC-CH, NCA&T/UNCG, ASU, ECU, UNCC, UNCW, and WCU. The proposed UNCW Southeast Housing Village would be developed to increase the current inventory of on-campus student housing to support the UNCW Strategic Plan and in accordance with the UNCW Campus Master Plan. The expansion of the Millennial Campus would not alter the level of oversight required by the Board of Governors for UNCW property transactions.

Action: This item requires a vote by the committee, with a vote by the full Board of Governors through the consent agenda.

UNCW Millennial Campus Expansion Request

Presented to the UNC Board of Governors
by Chancellor Jose V. Sartarelli and
Chief Financial Officer Sara Thorndike
January 2018



UNIVERSITY *of* NORTH CAROLINA WILMINGTON

Existing Millennial Property

- To create initiatives that directly and significantly advance the university's strategic goals and simultaneously enhance the economic development of the region, UNCW received approval in 2007 to designate three sites, two on main campus and one at a university property located about seven miles south of campus, as millennial property to support activities that:
 - Expand the academic and research capacity of the university
 - Respond to demand-driven needs and opportunities to identify and implement economic development and workforce initiatives
 - Enhance the university's ability to perform larger scale multidisciplinary applied research programs that focus on important regional issues
 - Foster creative research and entrepreneurial thinking
 - Develop new processes and products that will benefit the region, the state, and the global community
 - Create opportunities for students to interact with business partners in a real-world environment
 - Provide opportunities to develop new and creative funding sources for academic and research activities

Existing Millennial Property

- Main Campus
 - Student Housing constructed by UNCW Corporation, a blended UNCW associated entity
 - Health Sciences Quad
 - Athletic Facilities
- UNCW Campus for Research, Entrepreneurship, Service, and Teaching - CREST Research Park - drives translational research initiatives that support economic growth and innovative product developments that benefit the world
 - Partner with growing organizations that focus on cutting-edge biotechnology, analytical services, environmental sciences, and early stage pharmaceutical research and development
 - The Center for Marine Science
 - Shellfish Research Hatchery
 - MARBIONC - Marine Biotechnology in North Carolina

Existing Millennial Property

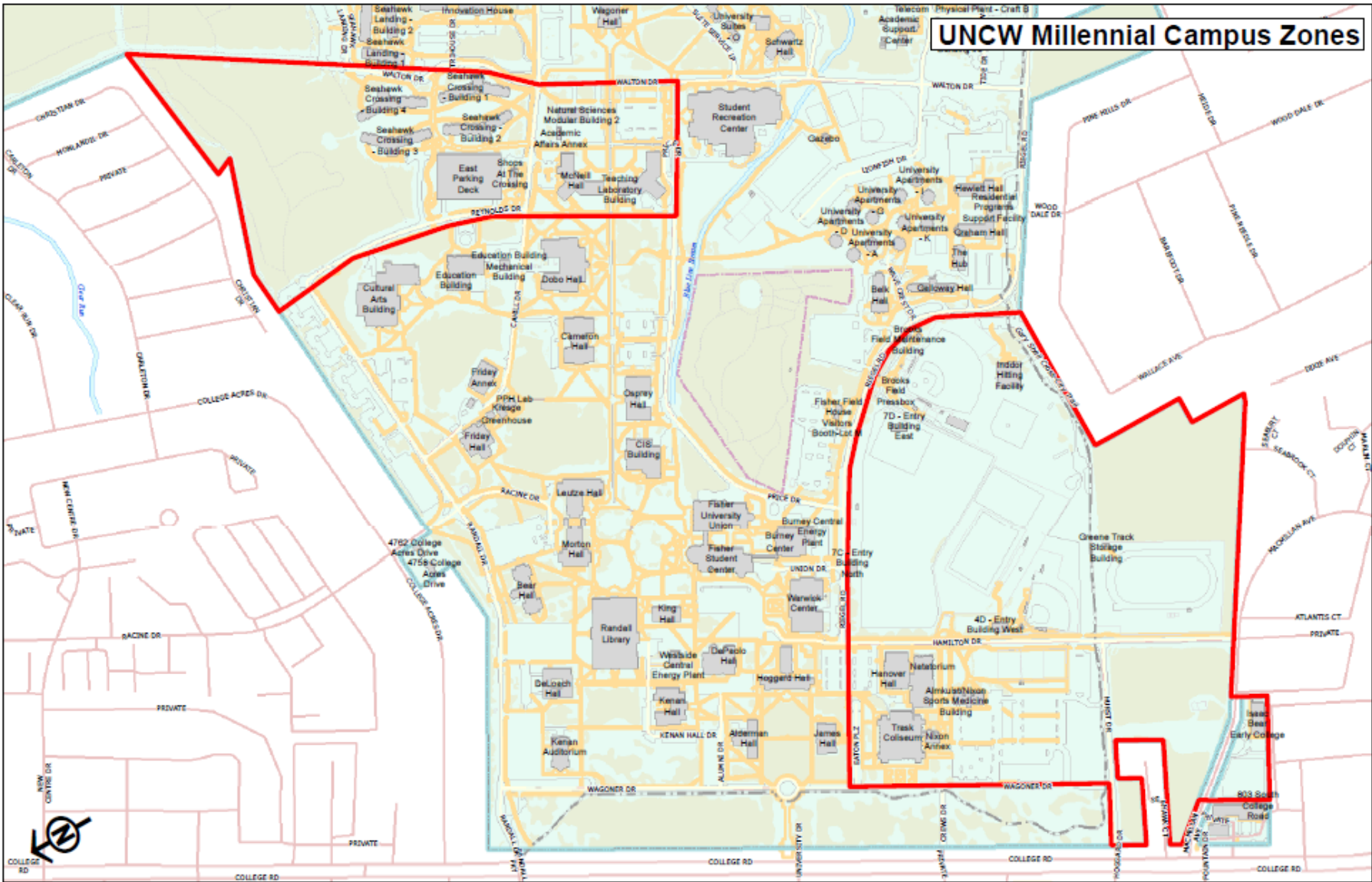
- The Center for Marine Science
 - Dedicated to providing an environment that fosters a multidisciplinary approach to questions in basic marine research
 - Mission of the center is to promote basic and applied research in the fields of oceanography, coastal and wetland studies, marine biomedical and environmental physiology, and marine biotechnology and aquaculture

Existing Millennial Property

- Shellfish Research Hatchery (SRH)
 - The mission of the SRH is to conduct and facilitate research that will inform and contribute to North Carolina's growing shellfish aquaculture industry through research, education, and industry development
 - Current projects involve the selective breeding of oysters, research on the performance advantages derived from triploidy, and crop diversification through the development of culture practices for bay scallops, pen shells, and sunray venus clams

Existing Millennial Property

- MARBIONC - Marine Biotechnology
 - R&D-based economic development program based at the University of North Carolina Wilmington that discovers, develops, and markets new products and technologies derived from the sea
 - Mission is to stimulate economic development in North Carolina through the discovery, development, and marketing of new products and technologies derived from living organisms found in the sea
 - Vision is to position North Carolina's marine biotechnology industry as a key component in reaching economic and environmental solutions on a global scale
 - Public/private wet laboratory space available for lease



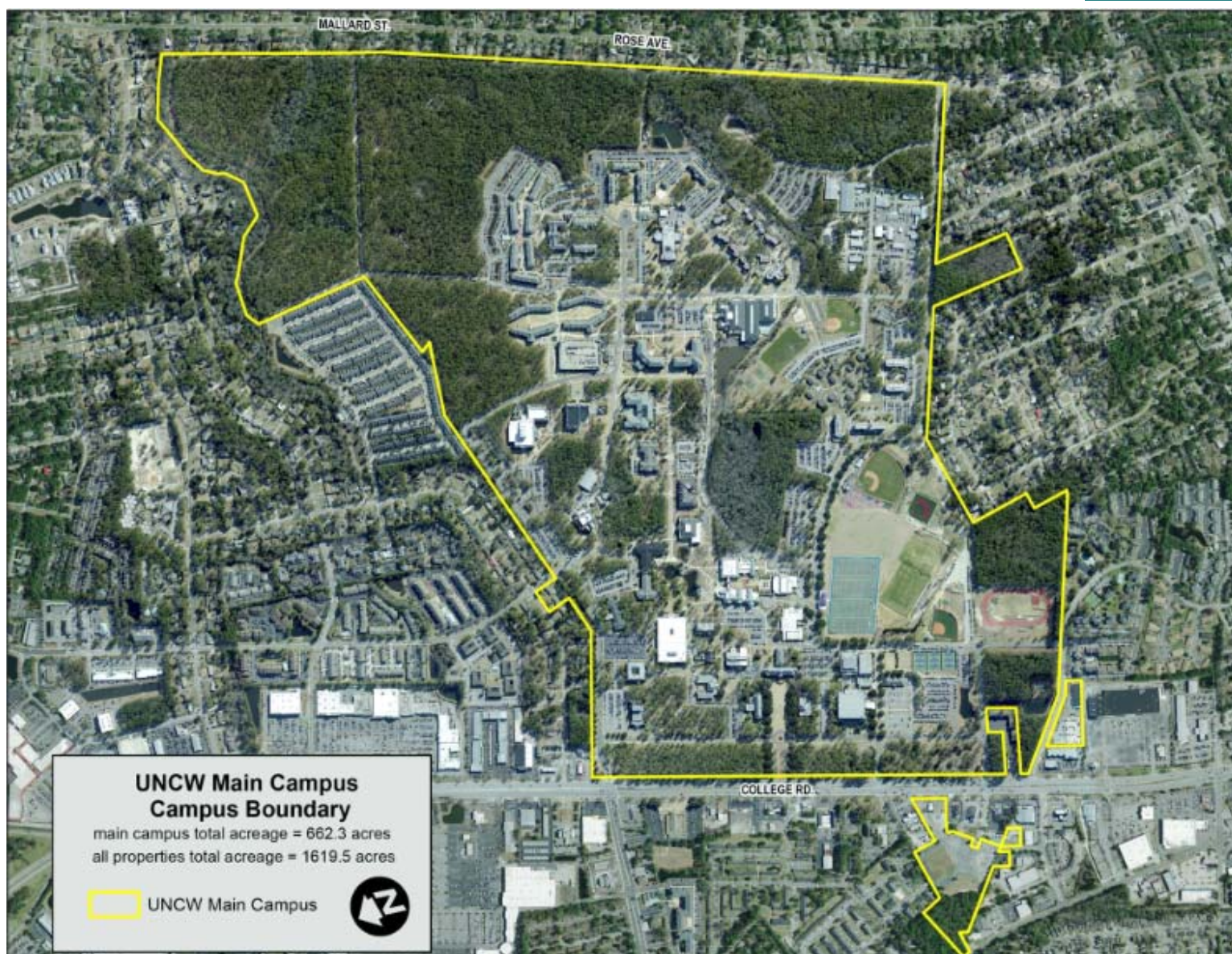
MYRTLE GROVE CAMPUS MAP

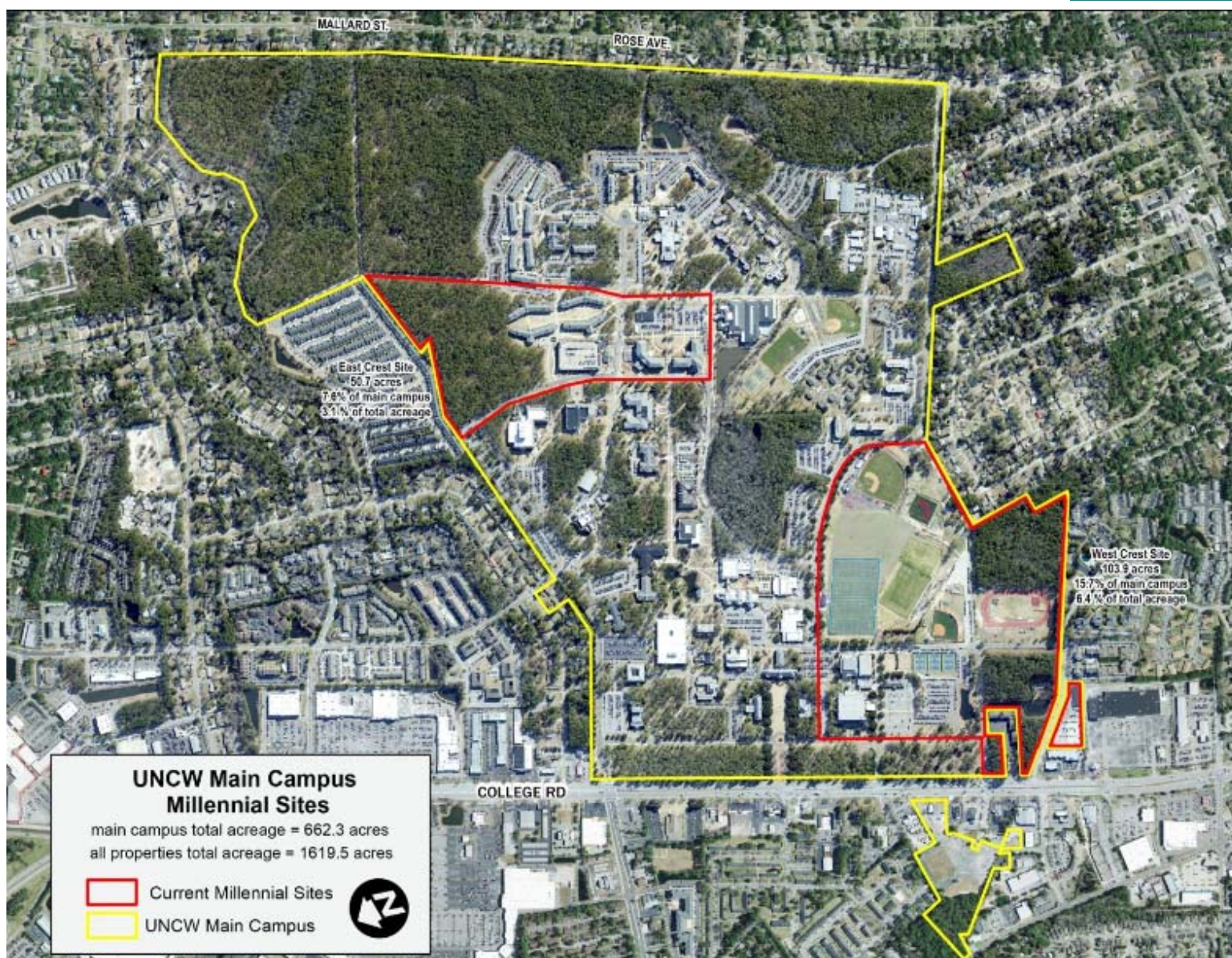


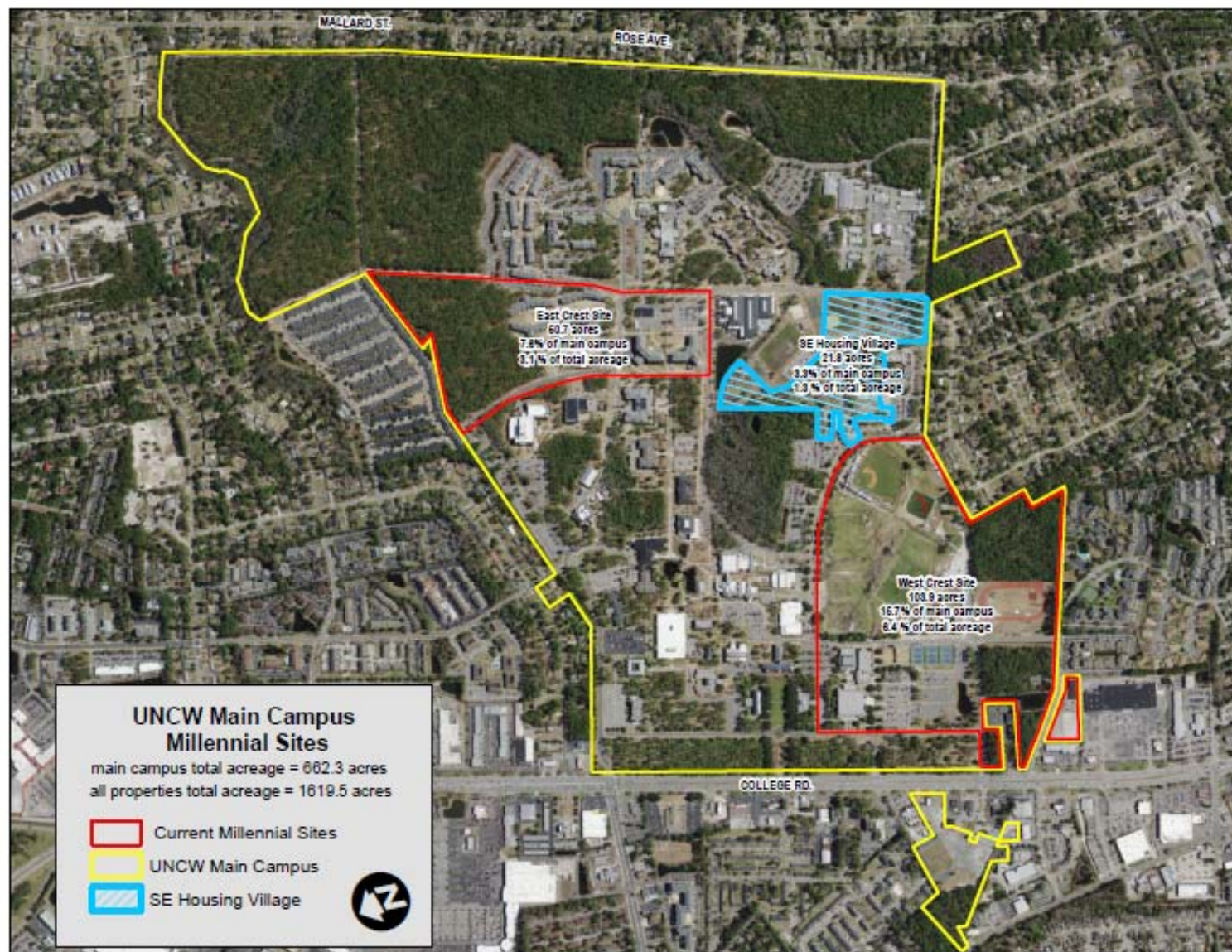
* Note: Additional future development opportunity sites are shown to accommodate potential need based on the recommendations of the UNCW Coastal and Marine Sciences Self Study, May 2017

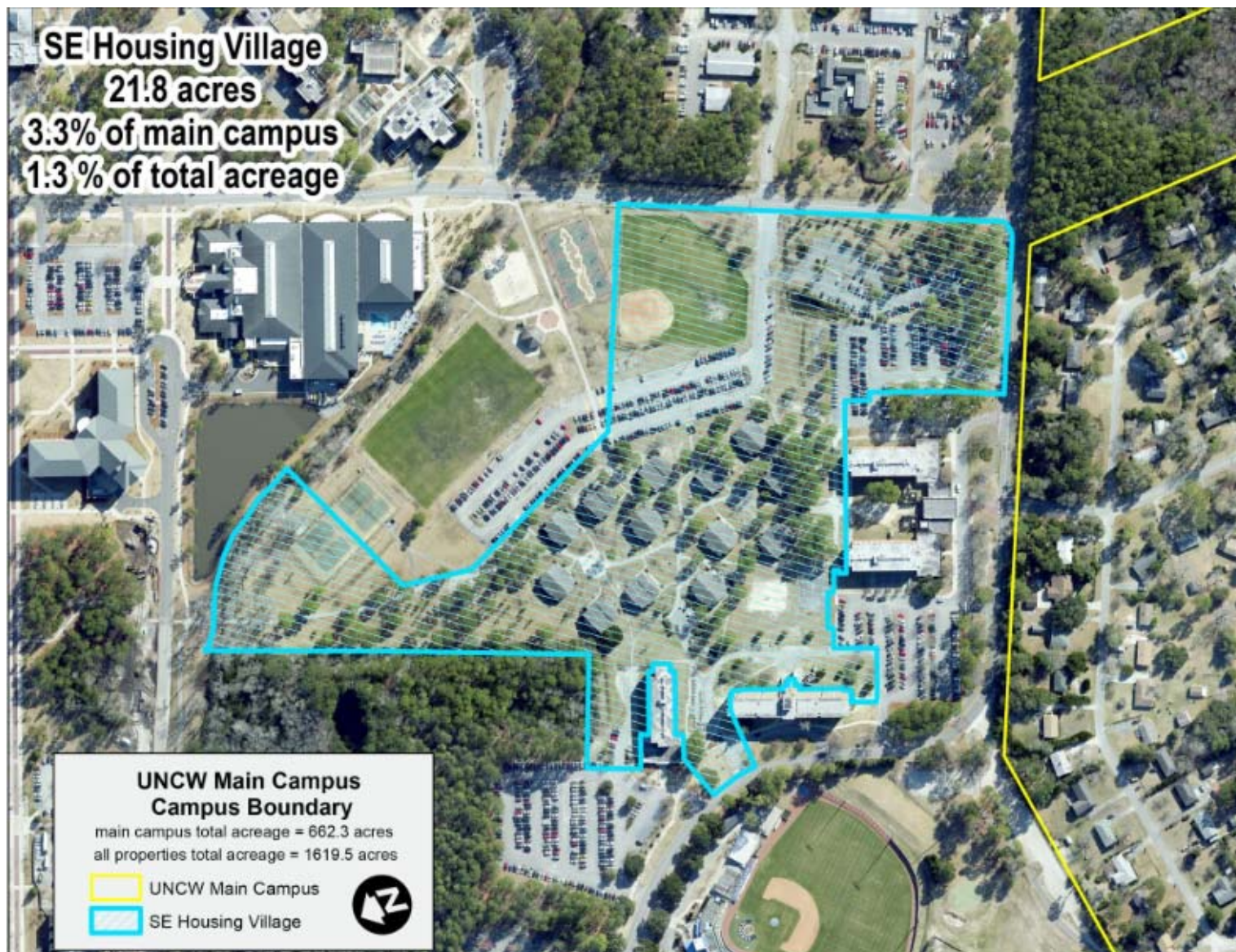
Expansion Request

- The University of North Carolina at Wilmington requests that the Board of Governors expand UNCW's existing Millennial Campus by adding approximately 21.79 acres from a single site for new student housing, dining, and parking
- Site is in close proximity to existing campus housing, dining, and outdoor recreational activities, and is located on the main campus
- Site will be known as the "Southeast Housing Village" and would be developed to provide affordable on-campus student housing with related appurtenances, parking, and dining to support UNCW's Strategic Plan and in accordance with UNCW's Campus Master Plan









Use of New Southeast Housing Village Millennial Property

- UNCW is currently considering a possible public private partnership (P3) to construct additional on campus housing
 - New housing will be primarily for freshman and some sophomores
 - Site will include dining and parking
- UNCW is working with Brailsford & Dunlavey and First Tryon as our housing and financial advisors for this transaction
- Need for additional housing is supported by demand study performed by Brailsford & Dunlavey
- A request for qualifications (RFQu) was issued to the market and returned to the university in September 2017

Use of Millennial Property

- From the RFQu submissions, up to 5 developers could be invited to participate in a request for proposal (RFP) that was returned to UNCW in November 2017
- UNCW is currently negotiating with developers who responded to the RFP
- Since we are in an open procurement process, the information the University can share at this time is very limited
- We expect to bring a P3 recommendation forward to the BOG for approval in May 2018

Use of Millennial Property

- New housing village would provide much needed facilities for growing enrollment of on-campus students at UNCW and promote UNC's strategic initiatives of student success and economic impact and community engagement
- Students who reside in on-campus housing experience higher graduation rates, academic performance, and engagement
- Additional housing allows the University to enroll more rural, low income, and critical workforce students and see them through graduation at higher rates
- Housing will be financially self-sufficient through use of student rents to service debt and operating expenses
- Working with a P3 developer supports UNC's strategic initiative of affordability as the University has determined we can offer lower student rents with the use of a P3 partner compared to a self-developed housing project
- Supports UNC and UNCW's standards of excellence

Summary

- Millennial property has served an important purpose at UNCW to advance the university's strategic goals and simultaneously enhance the economic development of the region
- Expansion of millennial property will continue to support this advancement
- Millennial property continues to be a successful model on other UNC campuses
- Millennial property designation on this part of UNCW's campus creates opportunity for a public private partnership (P3) with a housing developer where developer's experience can be leveraged and the university can achieve economic savings for students and North Carolina

Summary

- The Board of Trustees of the University of North Carolina at Wilmington respectfully requests that the UNC Board of Governors expand UNCW's existing Millennial Campus by adding approximately 21.79 acres from a single site for new student housing, dining and parking.

AGENDA ITEM

B-3. Student Health Insurance Update..... Brian Usischon

Situation: The University of North Carolina first implemented its system-wide hard waiver Student Health Insurance Program (SHIP) for all campuses in 2010. Students may waive participation in SHIP upon demonstration of creditable insurance coverage; otherwise they are enrolled in the SHIP. The University currently has a system-wide insurance policy with approximately 31,000 students covered. The rates available to students through the SHIP are generally much lower than they would be able to get on the open market.

Background: Health insurance for students is procured by the UNC System Human Resource Office, in conjunction with the North Carolina Department of Insurance and the North Carolina Association of Insurance Agents. The University awarded the student health insurance coverage to Blue Cross and Blue Shield of North Carolina (BCBSNC) in 2013. The current contract valued at approximately \$78 million with BC/BS expires on July 31, 2018. Therefore, the University issued a Request for Proposal (RFP) in August 2017. The University has received responses to the RFP and expects to award and execute a contract in the next few weeks.

Assessment: The University received four proposals for review and three vendors were invited for finalist presentation. Factors considered for reviewing each proposal include: organizational structure, financials, bidding requirement, network access, provider disruption/network utilization, plan administration, customer service, communication and vendor attributes. The final contract will be executed by the president on behalf of the University and will be in place for up to five years.

Action: This item is for discussion only.





STUDENT HEALTH INSURANCE

January 25, 2018

SHIP RFP Status

- SHIP RFP issued in August with assistance from the Department of Insurance (DOI) and DOI's agent of record.
- Four proposals were received and three vendors were invited for finalists presentations.
- Campus Student Health Center Directors participated in evaluating each proposal. UNC System requests sign off by campus administration, including the Chancellor and Vice Chancellor of Student Affairs.
- Award for the 2018-2019 Academic Year will be made in the next couple of weeks.

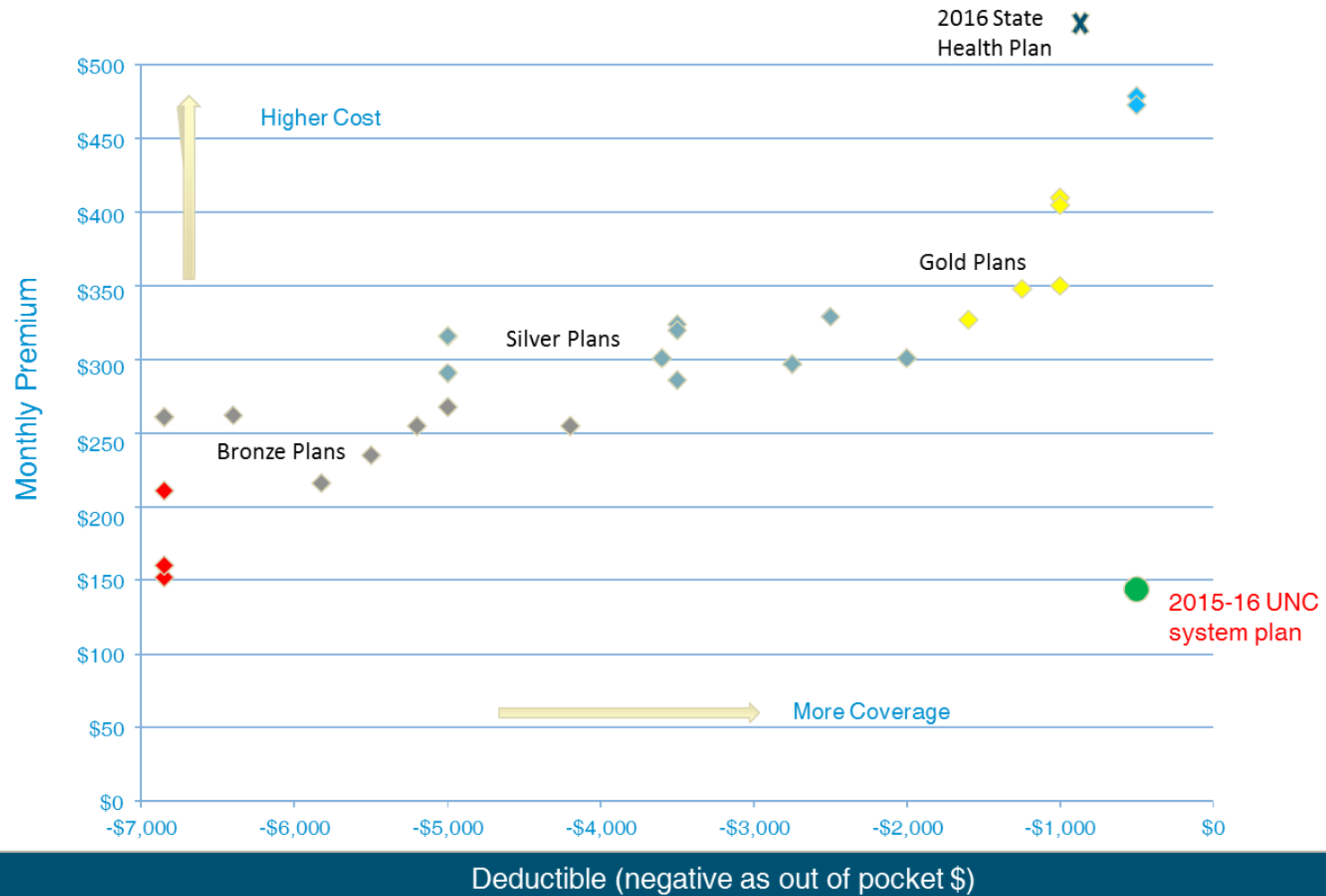
UNC Student Health Plan Financials

Academic Year	Actual Premiums Collected	Annual Premium	Total Number of Student Covered	Agent Fee on PMPM Basis	Actual Agent Fee Paid to NCAIA
2013-2014	\$59,041,804.50	\$1,356.00	43,541	0.65%	\$384,512.90
2014-2015	\$60,332,369.20	\$1,584.00	38,089	0.65%	\$392,519.36
2015-2016	\$60,925,812.66	\$1,707.00	35,692	\$0.77	\$356,553.11
2016-2017 ¹	\$71,017,959.81	\$2,202.00	32,252	\$0.77	\$296,103.66
2017-2018 (Estimate) ²	\$81,275,040.00	\$2,540.00	32,252	\$0.77	\$298,008.48

1 – The Actual Premiums Collected and Actual Agent Fee Paid for 2016-17 had not finalized yet.

2 – The 2017-2018 estimates are based off of the 2016-17 membership because BCBS did not have an official projection at the time of providing this data.

UNC vs Exchange and State Plans



Student Health Insurance

- Provides for the needs of the greatest number of students
- Balances plan design with cost and coverage
- Provides benefits for the uninsured and increases benefits for the underinsured
- Reduces institutional risk and liability
- Allows for sustaining long term viability
- Supports student success, time to degree, graduation, and overall well being of others

THANK YOU

QUESTIONS?