

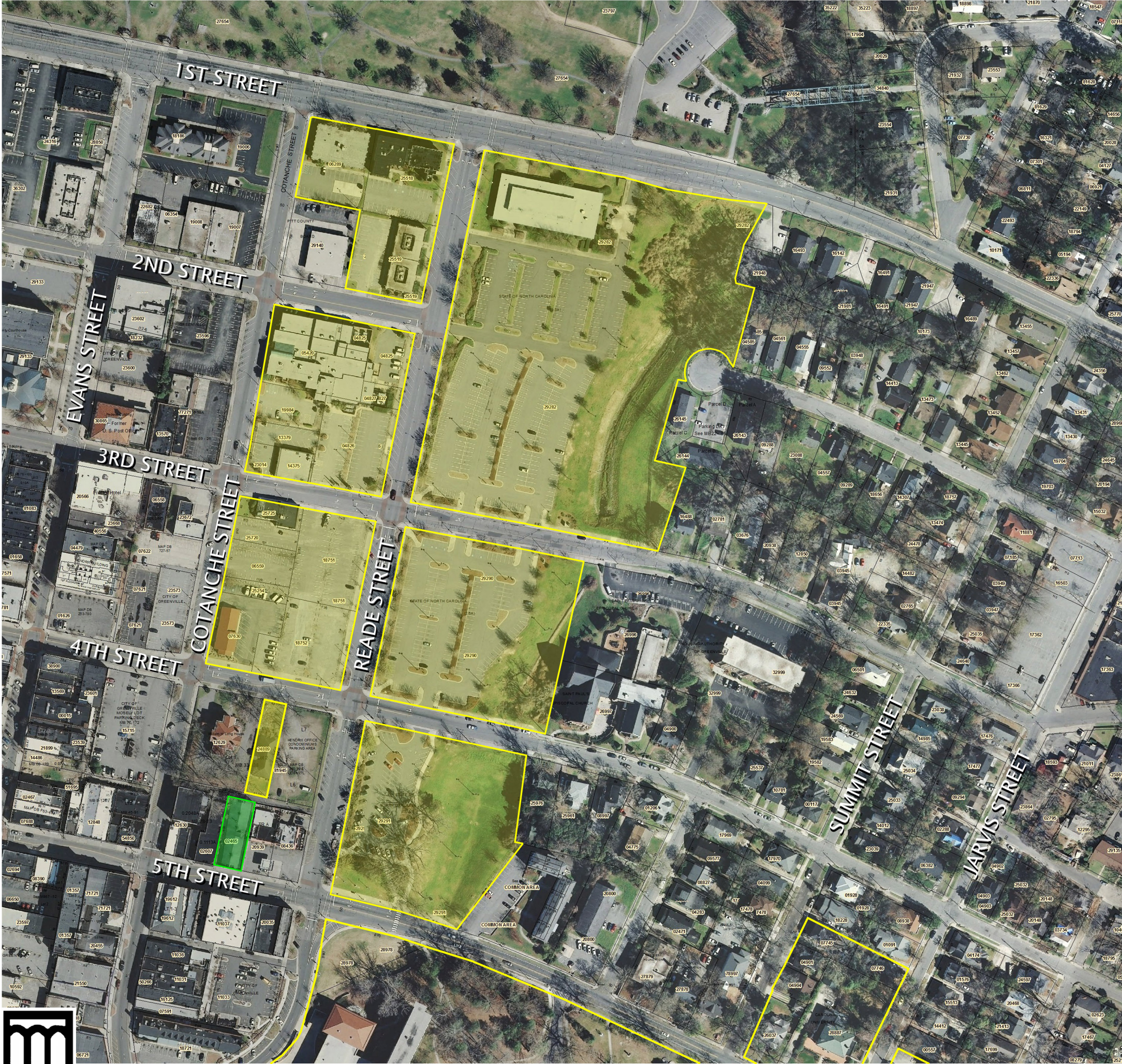
Acquisition of Property – East Carolina University

The Board of Trustees of East Carolina University has requested approval to acquire property by purchase from GreenTown Properties, Inc., a subsidiary of the ECU Real Estate Foundation.

Located at 209 East Fifth Street in Greenville, Pitt County, the property is sited on 0.16 acres and has a two-story 13,500 SF masonry building built in 1915 which previously housed the Phoenix and Hardtimes nightclubs. This property is in a corridor of office space between Reade Street and Cotanche Street owned by ECU and adjacent to the Registrar's Office. The building will be used as additional office space by ECU.

An April 2012 appraisal of the property indicated a value of \$1,000,000. The negotiated purchase price is \$1,103,099. The purchase will be funded with auxiliary overhead receipt funds.

It is recommended that the request of the Board of Trustees be approved and transmitted to the Council of State for final action.



PARCEL	AREA	DESCRIPTION
29282	8.13	WILLIS BLDG. & PARKING
29290	2.95	PARKING/NORTH OF 4TH STREET
29291	2.31	PARKING/NORTH OF 5TH STREET
06289	0.47	MATERIALS MANAGEMENT - BLDG. 141
25518	0.55	HUMAN RESOURCES - BLDG. 127
25519	0.48	FINANCIAL SERVICES BLDG.
05420	0.63	COTANCHE BLDG. (ITCS)
04825	0.25	COTANCHE BLDG. LOADING
04826	0.50	COTANCHE BLDG. PARKING
04827	0.08	COTANCHE BLDG. GENERATOR
19984	0.20	COTANCHE BLDG. PARKING
13379	0.15	BLDG. 165 PARKING
23014	0.08	BLDG. 165 PARKING
14375	0.08	BLDG. 165
25725	0.08	ADMINISTRATIVE SUPPORT ANNEX
25720	0.18	ADMIN. SUPPORT ANNEX PARKING
06559	0.23	PARKING
25254	0.10	PARKING
18751	0.51	PARKING
18752	0.53	PARKING
07630	0.38	BLDG. 159
24889	0.17	ENVIRONMENTAL HEALTH & SAFETY

TOTAL 19.04 ACRES

AREAS & DESCRIPTIONS DO NOT INCLUDE PARCELS SOUTH OF 5TH STREET OR EAST OF SUMMIT STREET.

EXISTING SQUARE FOOTAGE WITHIN DEFINED AREA IS:	
7,093 SF	BUILDING 141 (MATERIALS MANAGEMENT)
13,088 SF	BUILDING 127 (HUMAN RESOURCES)
15,366 SF	WILLIS BUILDING
5,568 SF	FINANCIAL SERVICES BUILDING
18,659 SF	CROATAN BUILDING
3,800 SF	BUILDING 165
3,427 SF	ADMINISTRATIVE SUPPORT ANNEX
3,490 SF	BUILDING 159 (QUIXOTE)
3,096 SF	EH&S BUILDING (BROWNING)
73,587 SF TOTAL	

UNDEVELOPED ACREAGE IS:
0 ACRES, HOWEVER PARKING AREAS OCCUPY APPROXIMATELY 14 ACRES WITHIN THIS AREA.



UPTOWN AREA CAMPUS PROPERTIES
COMPOSITE PITT COUNTY OPIS AERIAL MAP

