

Expansion of Millennial Campus – East Carolina University

ISSUE OVERVIEW

G.S. 116-198.34 grants the University of North Carolina Board of Governors authority to designate real property as a millennial campus when recommended by the president. It states that “designation shall be based on an express finding by the Board of Governors that the institution desiring to create a millennial campus has the administrative and fiscal capability to create and maintain such a campus and provided further, that the Board of Governors has found that the creation of the constituent institution’s millennial campus will enhance the institution’s research, teaching, and service missions as well as enhance the economic development of the region served by the institution.”

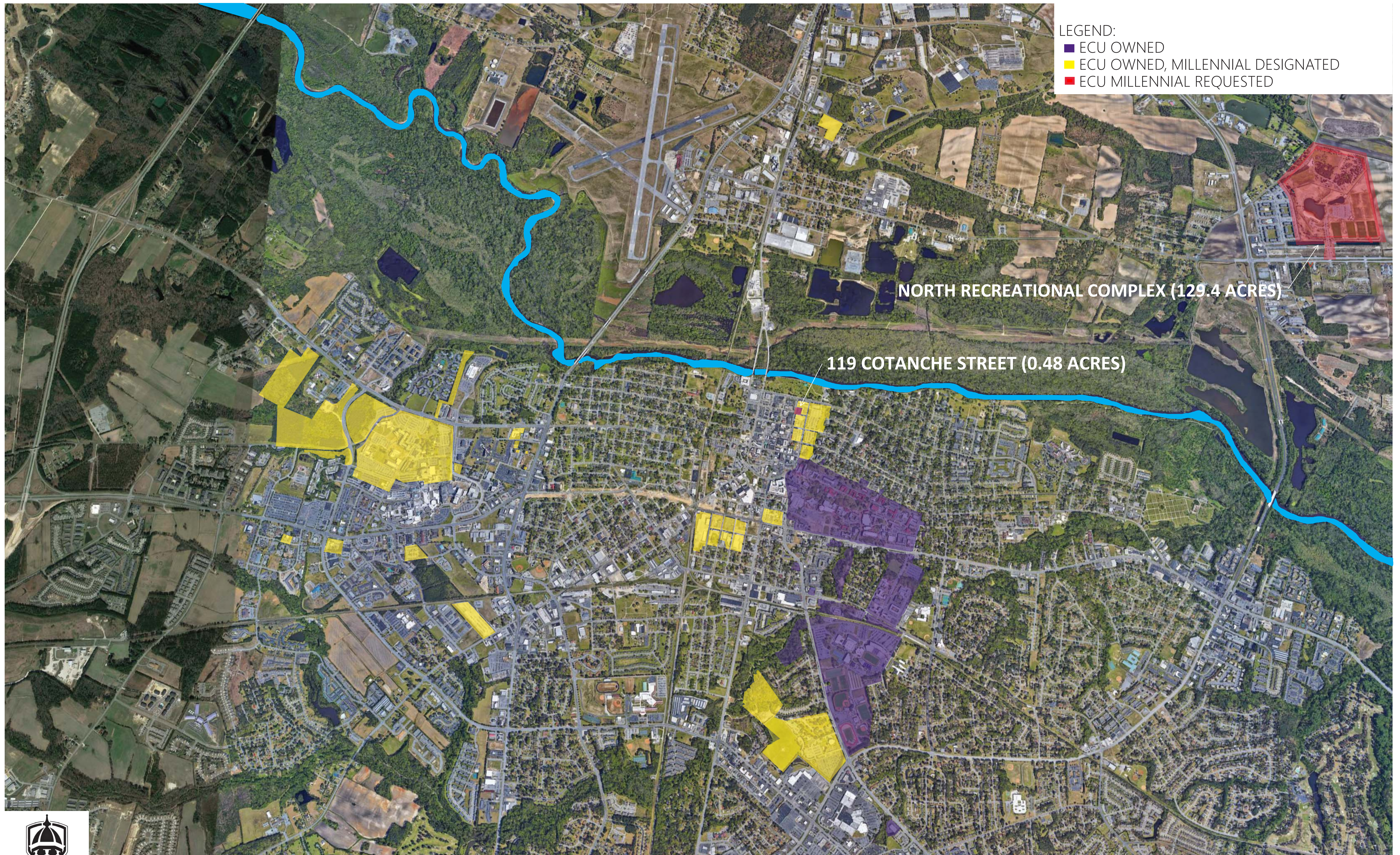
East Carolina University Board of Trustees is requesting an expansion of its millennial campus by a total of 129.88 acres. ECU requests adding the North Recreational Complex, located on Highway 264 East to the millennial campus. The university-owned property consists of four parcels totaling 129.4 acres and includes eight multipurpose recreational fields. Expanding the millennial campus to include the north recreational complex will increase opportunities for public and private sector partnerships. ECU also requests adding one parcel located at 119 Cotanche Street. The parcel is 0.48 acres and includes one building that houses the Department for People Operations, Success and Opportunity (POSO) Training Room. The parcel is bounded by other properties in the Uptown Area millennial campus and the expansion will increase opportunities for development.

In April 2015, the Board approved millennial campus designation of 328.35 acres at East Carolina. The millennial campus designation included four areas: the warehouse district, the uptown area, the health science campus, and the Stratford Arms area. In July 2018, the Board approved expanding the millennial campus designation to include an additional 207.7 acres. The expansion added 1.14 acres to the warehouse district and created two new millennial campuses, the greenhouse-renewable energy property, and the Coastal Studies Institute property in Manteo, North Carolina. The current millennial campus is 536.05 acres. The additional millennial campus expansion will increase the total millennial campus acreage to 665.93 acres.

The ECU Board of Trustees approved the recommendation to expand the millennial campus on February 7, 2025.

RECOMMENDATION

It is recommended that the Board of Governors approve the millennial campus designation with the understanding that specific projects, leases, and other actions related to the millennial campus, including those on property owned by an endowment board, shall be subject to the Board’s approval unless otherwise authorized by law or under delegated authority.



LEGEND:
■ ECU OWNED
■ ECU OWNED, MILLENNIAL DESIGNATED
■ ECU MILLENNIAL REQUESTED





NORTH RECREATIONAL COMPLEX – 128.4 ACRES



LEGEND:
 ■ ECU OWNED
 ■ ECU OWNED, MILLENNIAL DESIGNATED

PARCEL	AREA	ADDRESS	DESCRIPTION
29282	8.13	300 E FIRST ST	WILLIS BLDG. & PARKING
29290	2.95	0 E FOURTH ST	PARKING/NORTH OF 4TH ST.
29291	2.31	0 E FIFTH ST	PARKING/NORTH OF 5TH ST.
06289	0.47	200 E 1ST ST	MATERIALS MANAGEMENT BLDG. 141
25518	0.63	210 E FIRST ST	HUMAN RESOURCES BLDG. 127
25519	0.48	120 READE ST	FINANCIAL SERVICES BLDG.
05420	0.63	209 COTANCHE ST	COTANCHE BLDG. (ITCS)
04825	0.25	0 E 2ND ST	COTANCHE BLDG. LOADING
04826	0.50	0 E 3RD ST	COTANCHE BLDG. PARKING
04827	0.08	0 READE ST	COTANCHE BLDG. GENERATOR
19984	0.20	219 COTANCHE ST	COTANCHE BLDG. PARKING
13379	0.15	0 COTANCHE ST	BLDG. 165 PARKING
23014	0.08	221 COTANCHE ST	BLDG. 165 PARKING
14375	0.08	209 E THIRD ST	BLDG. 165
25725	0.08	208 E THIRD ST	ADMIN. SUPPORT ANNEX
25720	0.18	0 COTANCHE ST	ADMIN. SUPPORT ANNEX
06559	0.23	311 COTANCHE ST	PARKING
25254	0.10	0 COTANCHE ST	PARKING
18751	0.51	0 E THIRD ST	PARKING
18752	0.53	0 E FOURTH ST	PARKING
07630	0.38	319 COTANCHE ST	BLDG. 159
24889	0.17	210 E FOURTH ST	ENVIRO. HEALTH & SAFETY
TOTAL	19.04 ACRES		

AREAS & DESCRIPTIONS DO NOT INCLUDE PARCELS SOUTH OF 5TH STREET OR EAST OF SUMMIT STREET.

EXISTING SQUARE FOOTAGE WITHIN DEFINED AREA IS:	
7,093 SF	BUILDING 141 (MATERIALS MANAGEMENT)
13,088 SF	BUILDING 127 (HUMAN RESOURCES)
15,366 SF	WILLIS BUILDING
5,568 SF	FINANCIAL SERVICES BUILDING
18,659 SF	CROATAN BUILDING
3,800 SF	BUILDING 165
3,096 SF	EH&S BUILDING (BROWNING)
66,670 SF	TOTAL

UNDEVELOPED ACREAGE IS:
 0 ACRES. HOWEVER, PARKING AREAS OCCUPY APPROXIMATELY 14 ACRES WITHIN THIS AREA.

*ACREAGE AND USABLE SQUARE FOOTAGE TOTALS ARE BASED ON CURRENT TAX INFORMATION.



UPTOWN AREA CAMPUS PROPERTIES

COMPOSITE PITT COUNTY OPIS & GOOGLE EARTH AERIAL MAP - NOT TO SCALE - AUGUST 2023

119 COTANCHE STREET – 0.48 ACRES