

University of North Carolina Board of Governors
UNC Bond Program Report
August 2006

A number of CM at Risk projects have reached Guaranteed Maximum Price (GMP) agreements since the last Board meeting. UNCG's Aycock Auditorium Renovation (\$16.1M) and Petty Building Comprehensive Renovation (\$12M) as well as UNC-CH's Science Complex – Phase II (\$25.1M) have reached this milestone. In addition, construction contract awards have been made at NCA&T for Graham Hall Engineering Laboratory Renovation (\$2.6M), NCCU for Eagleson Residence Hall Renovation (\$8.3M), and UNCG for McNutt Classroom Building Renovation (\$3.8M).

The State Treasurer's Office has continued to provide excellent support for the program in making bond funds available with the institutions' needs. An additional \$200M in bonds were floated in June making the total now available \$2,175,800,000.

This year's legislative session included proposals that would change the day-to-day project processes between the University of North Carolina, the State Construction Office, and the Department of Insurance. An on-going dialog seeks to streamline these processes to improve the timely delivery of capital projects that would remain soundly constructed and in compliance with North Carolina codes.

An updated project status overview reflecting bond program activity by institution is included with this report. Slightly more than 87.5% of the bond program's \$2.5B has been committed to contracts or completed work.

HUB Update

HUB participation data for the campuses is being compiled for the first quarter of fiscal year 2006-07. The attached charts and spreadsheet (Attachments A, B,and C) depict the participation percentages for African American contractors by campus or affiliate, the trend for HUB participation by minority classification, and finally the dollars awarded as well as percentage participation by campus as of the end of fiscal year 2005 -06.

**The University of North Carolina
Bond Project Status Overview - July 2006 Data
Contractual Commitments from Bond Funds**

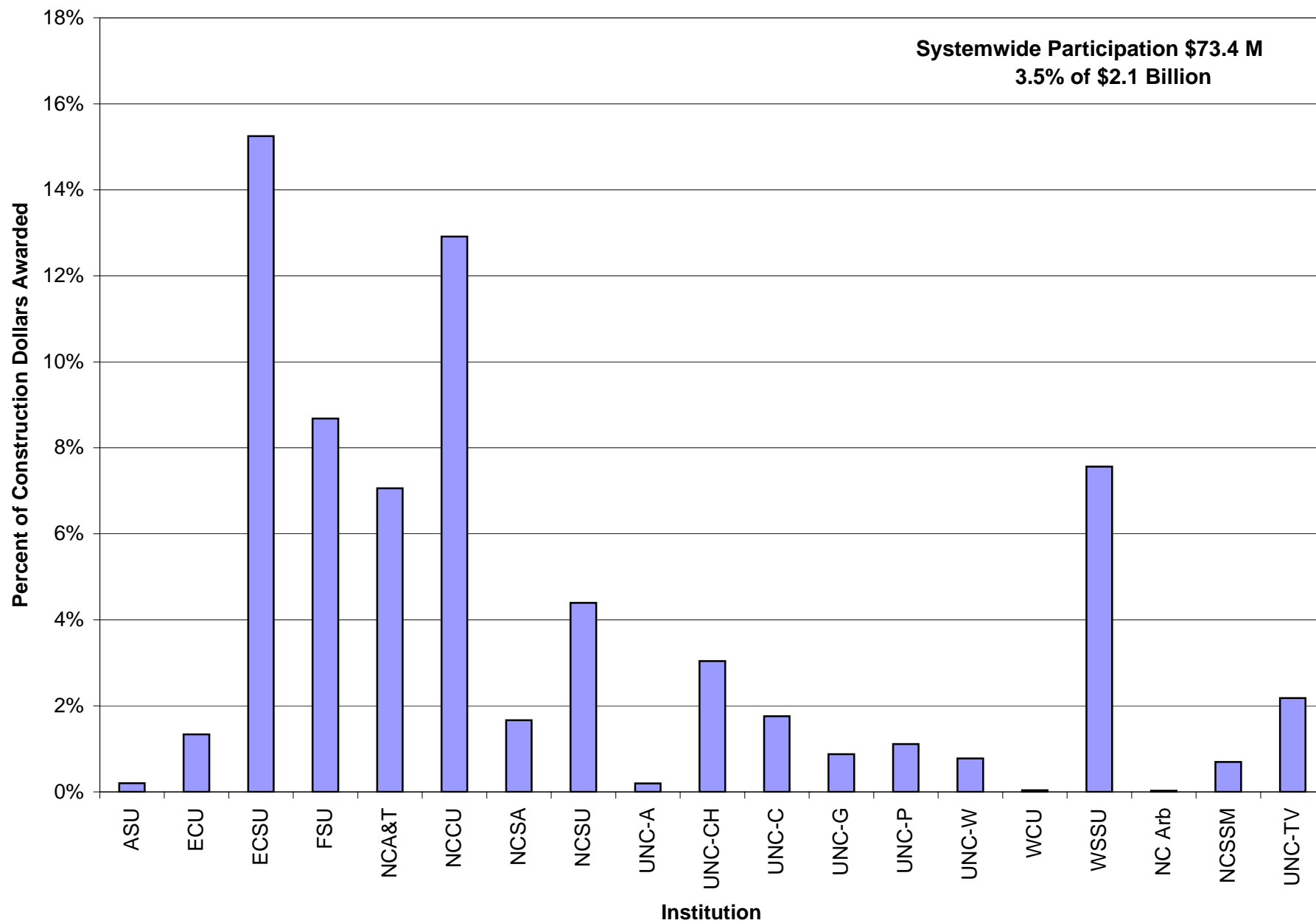
Institution	# of Projects per Bond List*	# of Project Bid Packages*	Total Dollar Value	In Design Phase				In Construction Phase				Complete				Land Acquisitions	
				\$	%	#	%	\$	%	#	%	\$	%	#	%	\$	%
ASU**	13	23	\$88,295,748	\$4,090,873	4.63%	0	0.00%	\$58,301,037	66.03%	5	21.74%	\$22,869,963	25.90%	18	78.26%	\$829,300	0.94%
ECU	13	21	\$190,609,500	\$6,431,999	3.37%	1	4.76%	\$71,733,366	37.63%	5	23.81%	\$94,958,862	49.82%	15	71.43%	\$7,668,849	4.02%
ECSU	19	31	\$46,767,970	\$4,039,490	8.64%	8	25.81%	\$22,163,219	47.39%	5	16.13%	\$17,565,318	37.56%	17	54.84%	\$0	0.00%
FSU	17	25	\$46,489,768	\$1,251,347	2.69%	4	16.00%	\$19,515,298	41.98%	13	52.00%	\$19,021,098	40.91%	8	32.00%	N/A	N/A
NCA&T	21	39	\$161,800,091	\$4,344,099	2.68%	6	15.38%	\$21,596,955	13.35%	6	15.38%	\$88,234,825	54.53%	27	69.23%	\$5,768,526	3.57%
NCCU	23	42	\$121,977,231	\$3,812,382	3.13%	2	4.76%	\$26,527,284	21.75%	10	23.81%	\$79,610,770	65.27%	30	71.43%	\$2,047,879	1.68%
NCSA**	12	10	\$42,547,500	\$499,176	1.17%	0	0.00%	\$4,170,622	9.80%	3	30.00%	\$33,695,702	79.20%	7	70.00%	\$3,252,341	7.64%
NCSU	40	115	\$472,740,939	\$14,858,446	3.14%	7	6.09%	\$150,434,367	31.82%	28	24.35%	\$234,612,139	49.63%	80	69.57%	\$3,101,366	0.66%
UNC-A**	9	12	\$50,464,200	\$3,763,019	7.46%	0	0.00%	\$31,965,410	63.34%	4	33.33%	\$14,437,543	28.61%	8	66.67%	N/A	N/A
UNC-CH	49	90	\$512,739,075	\$33,106,450	6.46%	17	18.89%	\$197,315,704	38.48%	29	32.22%	\$206,840,143	40.34%	44	48.89%	\$5,492,533	1.07%
UNC-C**	15	22	\$190,733,501	\$5,750,388	3.01%	0	0.00%	\$56,398,195	29.57%	7	31.82%	\$123,934,288	64.98%	15	68.18%	N/A	N/A
UNC-G	17	24	\$166,008,255	\$7,266,066	4.38%	3	12.50%	\$50,416,084	30.37%	6	25.00%	\$78,863,524	47.51%	15	62.50%	\$5,211,145	3.14%
UNC-P	19	16	\$56,873,600	\$1,302,542	2.29%	3	18.75%	\$11,279,583	19.83%	5	31.25%	\$38,474,714	67.65%	8	50.00%	N/A	N/A
UNC-W	18	29	\$109,201,800	\$6,324,862	5.79%	2	6.90%	\$45,844,333	41.98%	6	20.69%	\$36,488,641	33.41%	21	72.41%	\$2,100,000	1.92%
WCU	15	25	\$100,336,744	\$4,277,967	4.26%	6	24.00%	\$20,619,861	20.55%	4	16.00%	\$58,054,990	57.86%	15	60.00%	\$3,148,447	3.14%
WSSU**	13	20	\$47,106,581	\$181,975	0.39%	0	0.00%	\$2,099,132	4.46%	3	15.00%	\$44,196,097	93.82%	17	85.00%	N/A	N/A
UNC-TV**	2	7	\$65,890,600	\$12,500	0.02%	0	0.00%	\$86,789	0.13%	1	14.29%	\$53,457,801	81.13%	6	85.71%	N/A	N/A
NCSSM	2	4	\$5,163,000	\$0	0.00%	0	0.00%	\$0	0.00%	0	0.00%	\$5,163,000	100.00%	4	100.00%	N/A	N/A
NC Arb**	1	5	\$9,331,700	\$344,626	3.69%	0	0.00%	\$5,630,607	60.34%	3	60.00%	\$2,831,754	30.35%	2	40.00%	N/A	N/A
Reserve-for Repairs and Renovations & Cost Overruns***			\$14,922,197														
Total	318	560	\$2,500,000,000	\$101,658,207	4.07%	59	10.54%	\$796,097,846	31.84%	143	25.54%	\$1,253,311,172	50.13%	357	63.75%	\$38,620,386	1.54%

*The number of projects undertaken by the institutions differs from the number as listed in the bond legislation because projects are in some instances combined or separated into multiple phases. The percentages reported are based on the number of bid packages being prepared by the institution in order to give a more accurate progress picture. The number of projects listed based on legislation, reflects the original 316 items with adjustments approved through scope change requests.

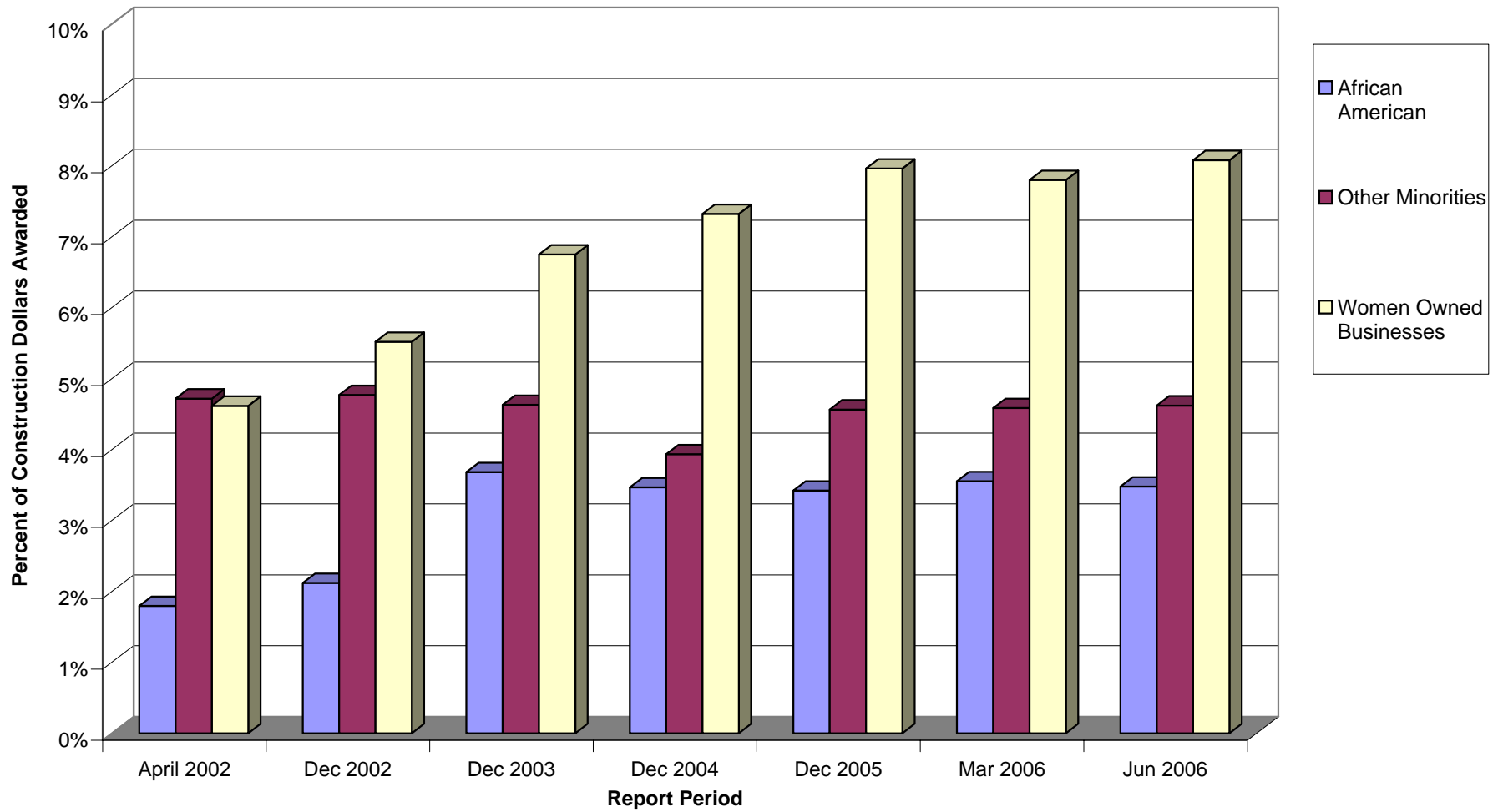
**With no construction projects in design, a dollar commitment continues to be reported reflecting the continued role of the designer in construction administration until completion of the project.

***The initial reserve of \$25,186,595 is reduced as reserves are transferred to institutions.

Attachment A
African American Participation by Campus
June 2006



Attachment B
Historical HUB Participation
April 2002 to June 2006



Attachment C
Minority Participation in Bond Construction Projects
Summary by Institution

Institution	DOLLAR AMOUNTS								PERCENTAGES						
	African American	Hispanic	Asian American	American Indian	(Non-Minority) Female	Socially and Economically Disadvantaged	TOTAL HUB	Project Total	African American	Hispanic	Asian American	American Indian	(Non-Minority) Female	Socially and Economically Disadvantaged	Total
ASU	\$157,727	\$413,229	\$465,050	\$38,200	\$6,901,244	\$1,975	\$7,977,425	\$78,047,878	0.2%	0.5%	0.6%	0.0%	8.8%	0.0%	10.2%
ECU	\$2,045,164	\$17,433,366	\$650,267	\$103,105	\$21,424,215	\$1,062,108	\$42,718,225	\$152,623,056	1.3%	11.4%	0.4%	0.1%	14.0%	0.7%	28.0%
ECSU	\$4,145,280	\$542,390	\$16,000	\$3,900	\$2,215,396	\$0	\$6,922,966	\$27,188,476	15.2%	2.0%	0.1%	0.0%	8.1%	0.0%	25.5%
FSU	\$3,150,455	\$0	\$0	\$3,524,494	\$1,847,480	\$3,500	\$8,525,929	\$36,292,887	8.7%	0.0%	0.0%	9.7%	5.1%	0.0%	23.5%
NC A&T	\$6,675,389	\$1,911,146	\$0	\$1,825	\$4,670,901	\$11,947	\$13,271,208	\$94,538,014	7.1%	2.0%	0.0%	0.0%	4.9%	0.0%	14.0%
NCCU	\$11,600,086	\$930,691	\$0	\$0	\$6,660,234	\$0	\$19,191,011	\$89,818,729	12.9%	1.0%	0.0%	0.0%	7.4%	0.0%	21.4%
NCSA	\$522,212	\$252,143	\$0	\$0	\$1,936,925	\$0	\$2,711,280	\$31,372,694	1.7%	0.8%	0.0%	0.0%	6.2%	0.0%	8.6%
NCSU	\$17,555,440	\$7,434,192	\$635,205	\$381,526	\$38,531,441	\$417,546	\$64,955,350	\$399,296,821	4.4%	1.9%	0.2%	0.1%	9.6%	0.1%	16.3%
UNCA	\$96,354	\$2,456,780	\$0	\$0	\$372,001	\$0	\$2,925,135	\$48,786,020	0.2%	5.0%	0.0%	0.0%	0.8%	0.0%	6.0%
UNC-CH	\$19,047,189	\$23,754,774	\$1,322,292	\$2,386,874	\$47,931,814	\$219,928	\$94,662,871	\$625,671,461	3.0%	3.8%	0.2%	0.4%	7.7%	0.0%	15.1%
UNCC	\$2,956,486	\$1,964,789	\$36,000	\$35,838	\$13,609,602	\$0	\$18,602,715	\$168,171,421	1.8%	1.2%	0.0%	0.0%	8.1%	0.0%	11.1%
UNCG	\$810,502	\$199,882	\$0	\$469,394	\$4,305,922	\$0	\$5,785,700	\$92,446,745	0.9%	0.2%	0.0%	0.5%	4.7%	0.0%	6.3%
UNCP	\$427,530	\$33,200	\$0	\$14,981,231	\$1,878,329	\$5,865,860	\$23,186,150	\$38,364,408	1.1%	0.1%	0.0%	39.0%	4.9%	15.3%	60.4%
UNCW	\$604,919	\$3,151,846	\$54,080	\$483,782	\$12,095,204	\$377,505	\$16,767,336	\$77,825,303	0.8%	4.0%	0.1%	0.6%	15.5%	0.5%	21.5%
WCU	\$33,792	\$2,427,078	\$9,000	\$5,027	\$2,330,847	\$0	\$4,805,744	\$85,348,851	0.0%	2.8%	0.0%	0.0%	2.7%	0.0%	5.6%
WSSU	\$3,321,283	\$470,000	\$0	\$0	\$2,743,274	\$320,450	\$6,855,007	\$43,903,759	7.6%	1.1%	0.0%	0.0%	6.2%	0.7%	15.6%
UNC-TV	\$176,898	\$0	\$0	\$0	\$553,407	\$0	\$730,305	\$8,098,967	2.2%	0.0%	0.0%	0.0%	6.8%	0.0%	9.0%
NCSSM	\$36,198	\$80,265	\$10,658	\$22,513	\$377,372	\$0	\$527,006	\$5,202,326	0.7%	1.5%	0.2%	0.4%	7.3%	0.0%	10.1%
NCARB	\$2,059	\$119,246	\$0	\$0	\$127,259	\$0	\$248,564	\$7,270,703	0.0%	1.6%	0.0%	0.0%	1.8%	0.0%	3.4%
TOTAL	\$73,364,963	\$63,575,017	\$3,198,552	\$22,437,709	\$170,512,867	\$8,280,819	\$341,369,927	\$2,110,268,519	3.48%	3.01%	0.15%	1.06%	8.08%	0.39%	16.18%