

ECU Millennial Campus Expansion Request

*Presented to the Board of Governors
by Sara Thorndike, Vice Chancellor for
Administration and Finance*

July 2018

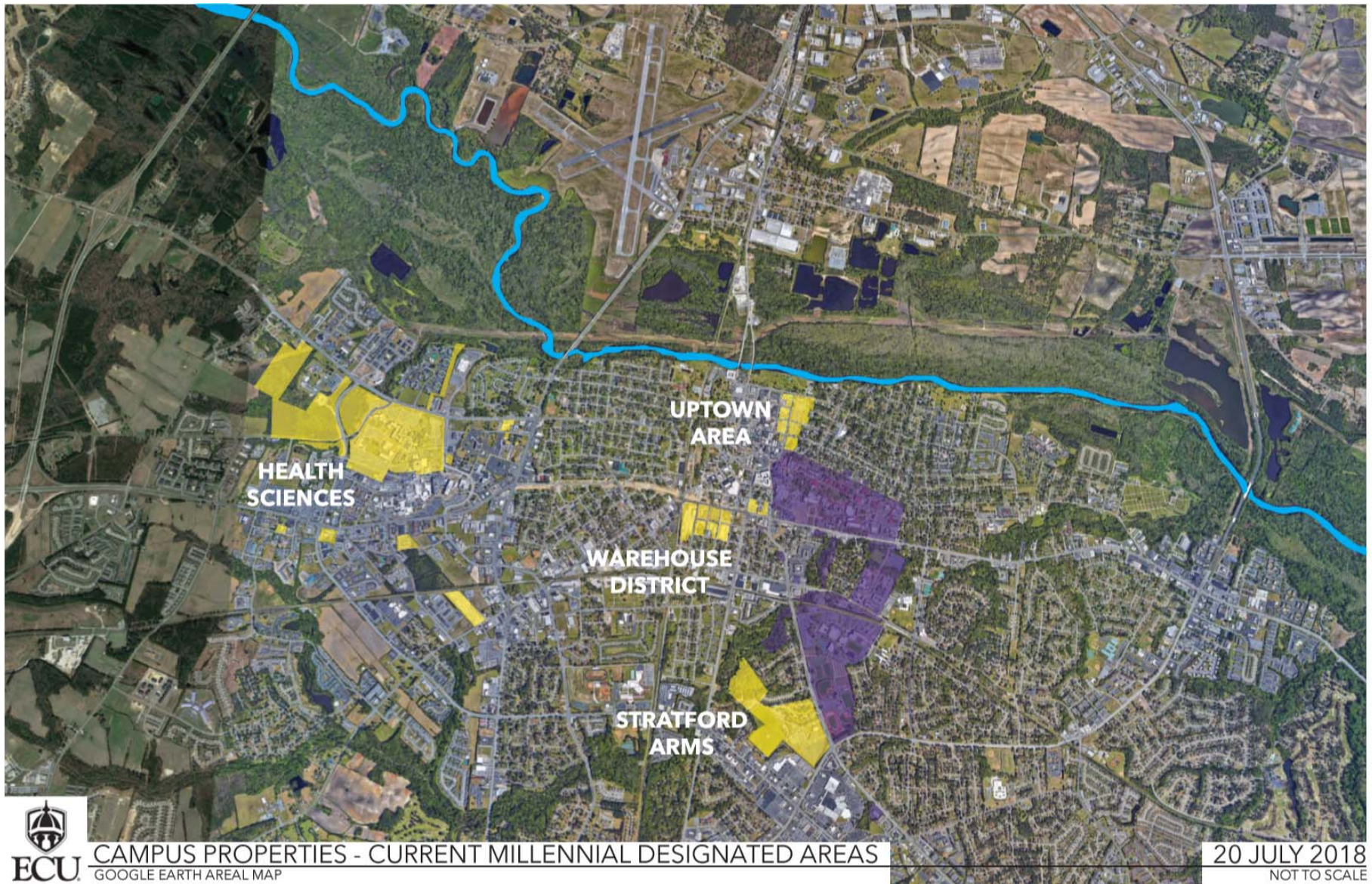


Existing Millennial Campus

- In 2015, East Carolina University received approval from its Board of Trustees and the UNC Board of Governors to designate 329 acres as the ECU Research and Innovation Campus to drive creation of Greenville's Arts & Innovation District, and enable beneficial transformation region-wide, through public-private partnerships, to produce innovations in education, science, technology and the arts that address regional challenges while attracting and retaining talent and investment



Existing Millennial Campus



Research Innovation and Progress

- Construction begins July 2019 on Life Sciences and Biotechnology Building near the Warehouse District for multidisciplinary, team-based, industry-relevant research
- Partnering with private developer on Innovation and Economic Development Hub within the historic Export Leaf Tobacco Building in the Warehouse District
- Construction begins Summer 2019 on Research Greenhouse and field site for renewable energy research
- Designation of ECU as the administrative home for the UNC Coastal Studies Institute
- Establishment of 8 university research clusters led by, and supporting faculty-initiated research teams



Research Innovation and Progress

- Addition of design thinking, innovation and entrepreneurship training in ECU's Honors College curriculum
- Establishment of the Miller School of Entrepreneurship within ECU's College of Business
- ECU's Building 43 renovations will provide “garage space” for creative interdisciplinary collisions among students and faculty
- Funding from U.S. Economic Development Administration's Regional Innovation Strategies Program for building regional capacity translates innovations into jobs
- Funding from National Science Foundation's Innovation Corps Program transitions technology concepts into the marketplace



Research Innovation and Progress

- Establishment of GreenvilleSEED@ECU incubator in partnership with City of Greenville and Greenville-Pitt Chamber of Commerce
- ECU Economic Development Academy provides place-based economic development training statewide to elected officials, business leaders and economic development staffers
- Roll-out of ECU's Rural Prosperity Initiative harnessing the intellectual strengths and research facilities of ECU to improve the quality of life, health, education, and employment for the people and communities of our region



Impacts to ECU, Region and State

- Creates, expands and recruits new enterprises and a skilled, knowledgeable, and adaptable labor-force
- Fuels knowledge transfer, innovation and entrepreneurship
- Develops regional leadership
- Targets scholarship and service for distressed communities
- Positions region as a magnet for talent, creativity, and investment



Supports UNC Strategic Plan

- Diverse revenue streams can help fund campus Affordability; learning from private businesses encourages Efficiency
- Public-private partnerships have a positive Economic Impact and increase Community Engagement through job creation and knowledge transfer
- Opportunities to engage in research and innovation create experiential learning that helps students develop competencies and promotes Student Success
- Involvement in partnerships gives students Access to rigorous learning experiences
- Expanded opportunities for learning and curriculum development in these subject areas promotes Excellence and Diversity

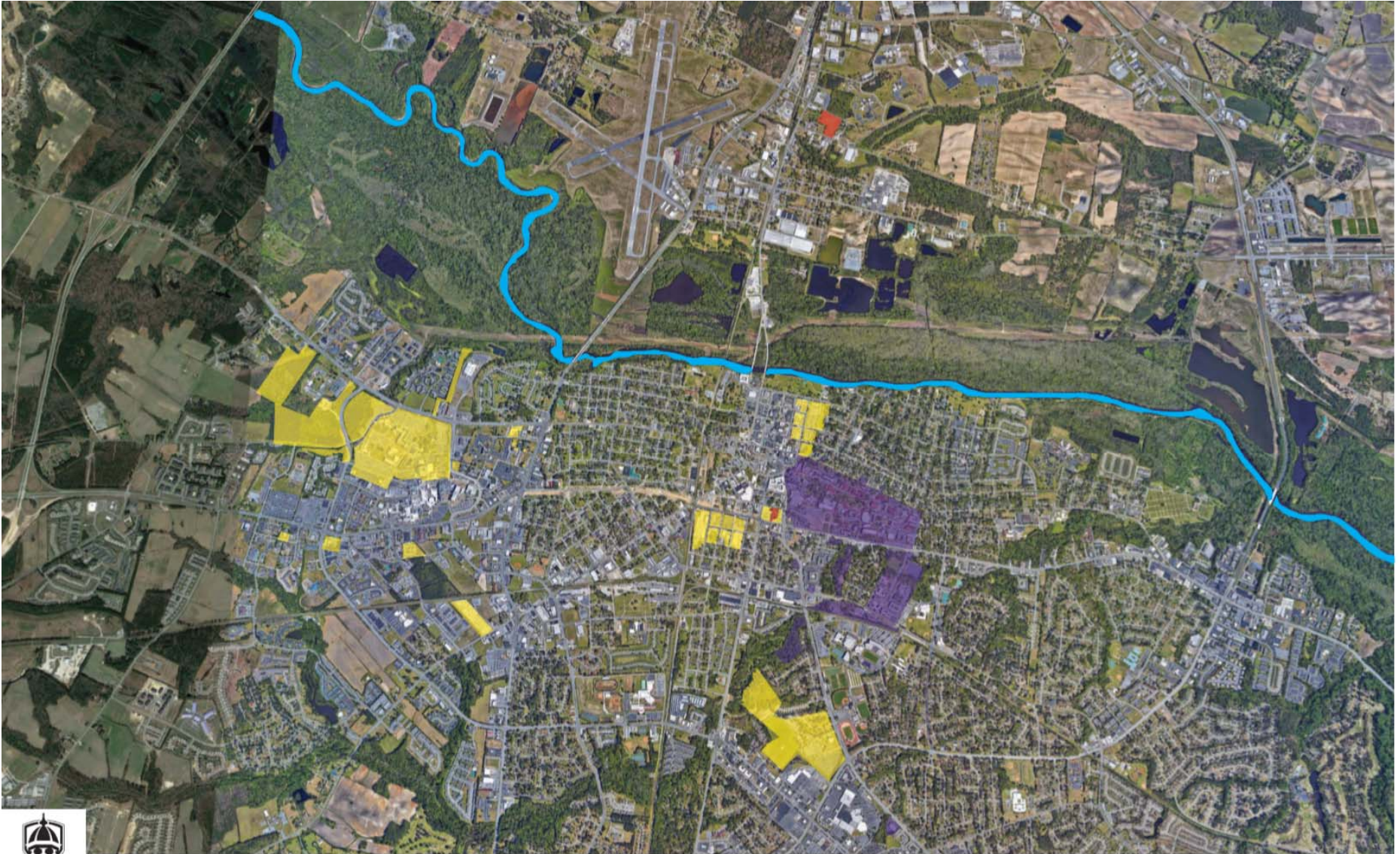


Expansion Request

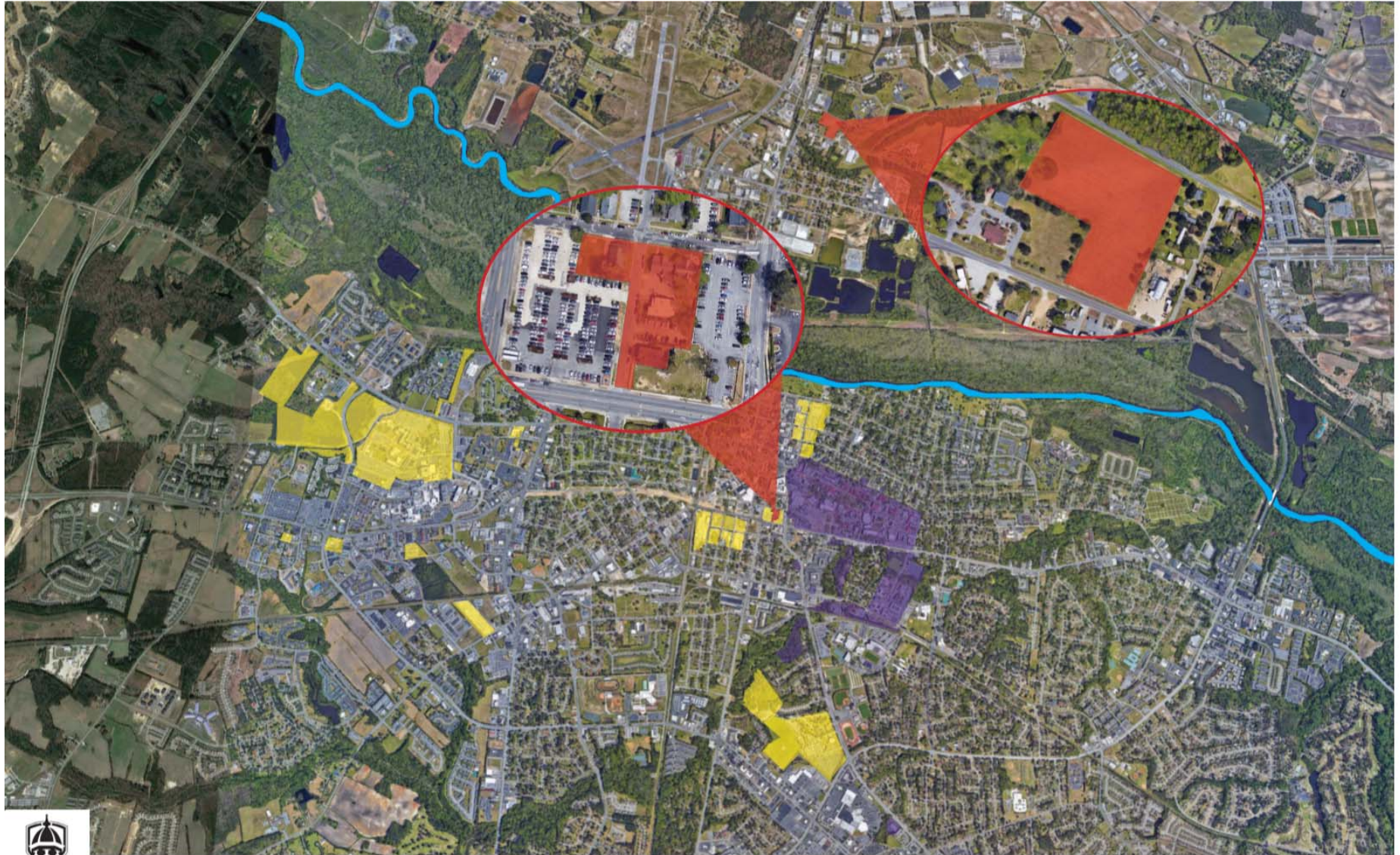
- East Carolina University, which comprises 1,580 acres, seeks Millennial Campus designation for nine parcels and one road closure for the ECU Research and Innovation Campus to:
 - Add to existing Warehouse District Campus (1.14 acres)
 - Create two new Millennial Campus areas:
 - Greenhouse-Renewable Energy Property (6.71 acres)
 - Coastal Studies Institute Property (199.91 acres)



Expansion Request



Expansion Request



Expansion Request

Warehouse District Campus Properties



Expansion Request

Warehouse District Campus Properties

- Includes 6 parcels in the Forbes Street Closure area
- Creates a contiguous property for the Life Sciences and Biotechnology Building and an associated parking garage (between 9th and 10th Streets and Evans and Cotanche Streets)
- Maximizes opportunities for public-private partnerships; supports opportunities to leverage non-state resources to fuel economic development throughout the district



Expansion Request

Greenhouse-Renewable Energy Property



Expansion Request

Greenhouse-Renewable Energy Property

- 6.71 acres between N. Greene and Owens Streets and E. NC 33 and E. Belvoir Street
- Site for ECU's Research Greenhouse and a field site for renewable energy research
- The Research Greenhouse will complement the new bio-extraction facilities planned for the Life Sciences and Biotechnology Building, enabling new product and process innovations to support targeted regional industry clusters (pharmaceuticals, biomaterials, energy)



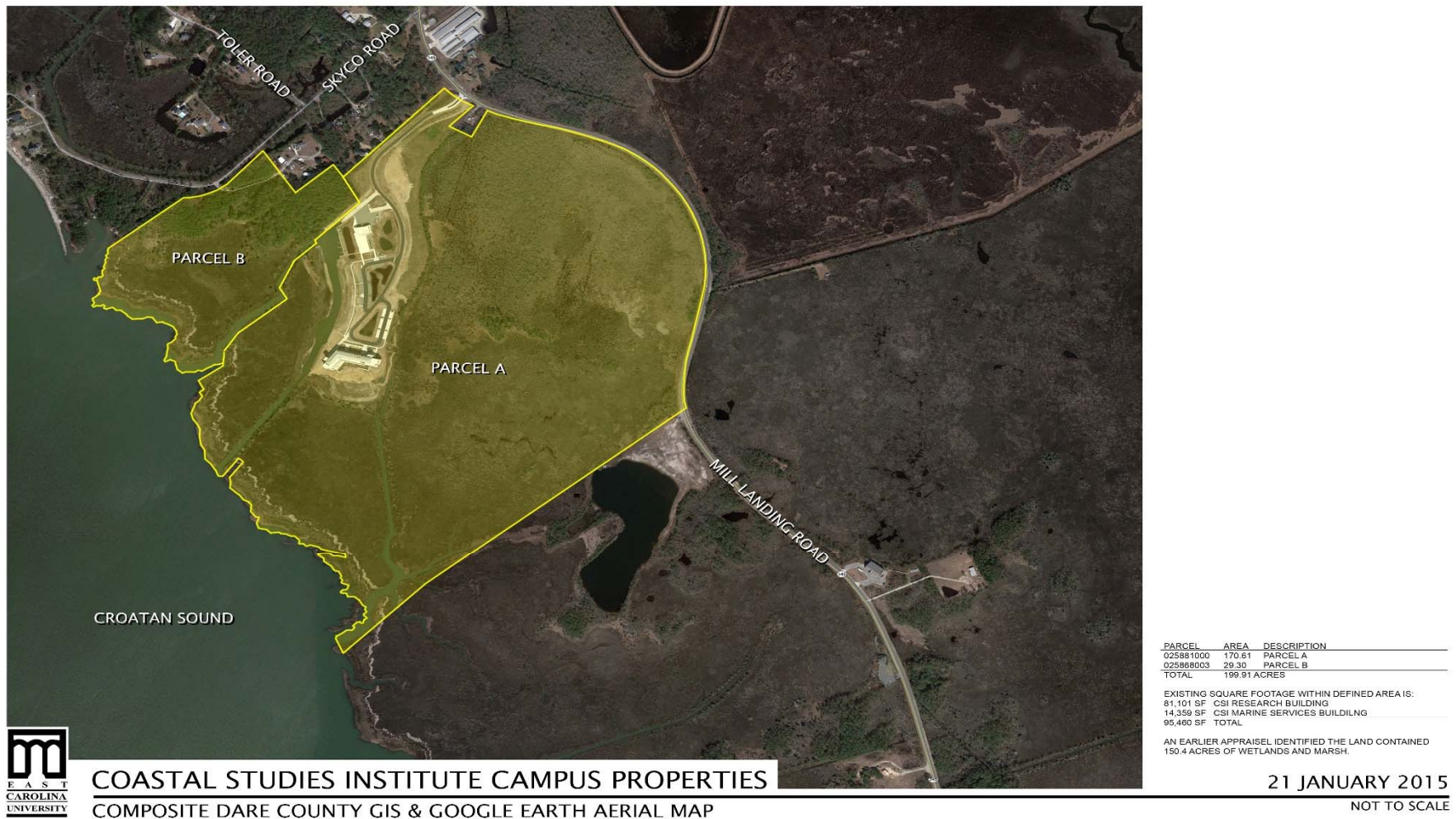
Expansion Request

- Field site for research and workforce training supports advances in areas such as renewable biogas, which has the potential to serve as a major economic driver in eastern North Carolina
- Optimally located: adjacent to the Technology Enterprise Center, a collaborative research, workforce training, manufacturing and incubation facility operated by the Pitt County Development Commission, and proximate to numerous ECU industrial partners located within Greenville's Indigreen Corporate Park



Expansion Request

Coastal Studies Institute Property, Manteo, NC



Expansion Request

- UNC Coastal Studies Institute (CSI) encompasses 199.91 acres and collaborates with numerous external partners including the Bureau of Ocean Energy Management, the U.S. Army Corps of Engineers, the federal government's Hurricane Sandy Task Force, state coastal planning agencies and other entities to analyze needs and develop plans for coastal restoration
- Fosters mutually beneficial partnerships and resulting impacts emanating from this critically located regional installation
- Potential public-private economic development partnerships in energy related start-ups, hospitality leadership, and cultural tourism could enhance the economies of surrounding communities and coastal development



Request for Approval

- The Board of Trustees of East Carolina University respectfully requests that the UNC Board of Governors approve the expansion of ECU's existing Millennial Campus to:
 - Add to the existing area of the Millennial Campus in the Warehouse District (1.14 acres)
 - Create two new Millennial Campus areas:
 - Greenhouse-Renewable Energy Property (6.71 acres)
 - Coastal Studies Institute Property (199.91 acres)

