

---

# The University of North Carolina Transfer Student Report

2012

---



The University of North Carolina  
General Administration

June 2013

# Table of Contents

Executive Summary .....	1
Introduction.....	2
UNC Transfer Student Enrollment Trends.....	3
Figure 1: <i>UNC Transfer Student Enrollment Trends - By Origin</i> .....	3
Figure 2: <i>UNC Transfer Student Enrollment Trends - NCCCS Categories</i> .....	4
Demographics of UNC Transfer Students .....	5
Figure 3: <i>Demographics of UNC Transfer Student</i> .....	5
Entering Class Level .....	6
Figure 4: <i>UNC Transfer Student Entering Class Level</i> .....	6
Graduation & Progress Rates.....	7
Figure 5: <i>UNC Transfer Student Graduation Rates - Juniors, 2002 &amp; 2008 Cohorts</i> .....	7
Transfer Student Declared Majors .....	8
Partnerships.....	9
<i>How to Read the Heat Map: Example of ASU</i> .....	10
<i>UNC Institutions That Indicate Strong NCCCS Transfer Relationships, Fall 2012</i> .....	11
<i>UNC Institutions With Moderately Strong NCCCS Transfer Relationships, Fall 2012</i> ...	12
<i>UNC Institutions With No Discernible NCCCS Transfer Relationship, Fall 2012</i> .....	13
Other Transfer Initiatives Within UNC General Administration .....	14
<i>Comprehensive Articulation Agreement</i> .....	14
<i>Credit Where It's Due Initiative</i> .....	14
<i>North Carolina Higher Education Research Consortium (NC-HERC)</i> .....	14
<i>Collaboration on Policy-Relevant Research</i> .....	15
 Appendix A - Definition of Terms.....	 16
Appendix B - UNC Transfer Student Enrollment Trends, Fall 2002 - Fall 2012 .....	17
Appendix C - UNC Transfer Student Enrollment by Campus, Fall 2012 .....	18
Appendix D - Campus Transfer Student Enrollment Trends, Fall 2002 - Fall 2012 .....	19
Appendix E - UNC Transfer Student Entering Class Level, Fall 2012 .....	35
Appendix F - Transfer Student Graduation Rates.....	36
Appendix G - Transfer Students Declared Majors.....	40
Appendix H - North Carolina Community College System Campuses.....	41

# Executive Summary

Over the last several decades, there has been a dramatic change in the number of transfer students matriculating at North Carolina's public four-year institutions. These students come from the North Carolina Community College System (NCCCS), NC private institutions, other University of North Carolina (UNC) institutions, and institutions in other states. Due to the critical importance of this population to the system's five-year strategic plan, this report provides context, data, and analysis on transfer students to inform policy and practice.

Key findings in this year's report include:

- The transfer student population continues to make up a large portion of the UNC student body.
  - The Fall 2012 undergraduate student body consisted of nearly **44,000** transfer students. About **25%** of all undergraduates, or one in four, are enrolled system-wide entered a UNC institution at some point as a transfer student.
  - The number of undergraduate transfer students entering UNC increased by **13%** from Fall 2008 to Fall 2012, from **13,002** to **14,724**.
- The majority of transfers come to UNC campuses from NCCCS and these transfers represent the fastest growing segment of the transfer population.
  - In Fall 2012, **54% (7,893)** of all newly enrolled transfer students came from NCCCS.
- The diversity of the transfer student population mirrors that of the general UNC student population, with slightly more Pell grant recipients.
- Transfer students graduate at lower rates when compared to UNC juniors who began as first-time freshmen.
  - Transfer students entering UNC at the junior level in 2008 had an overall four-year graduation rate of **69%** compared to the UNC native junior graduation rate of **86%**.
  - NCCCS transfers with an AA/AS degree and UNC-to-UNC transfers had the highest four-year graduation rate, **76%**.
- Transfer students who declare majors upon entering the UNC system have a higher graduate rate than undecided transfer students.
  - Using comparable sub-populations from the 2008 cohort, students declaring a major had a **71%** graduation rate compared to **63%** for those entering undeclared.

# Introduction

The number of transfer students matriculating to North Carolina’s public four-year institutions dramatically increased over the past several decades. These students come from the North Carolina Community College System (NCCCS), NC private institutions, other University of North Carolina (UNC) institutions, and institutions in other states. In order to better serve transfer students, UNC General Administration (UNC GA) is actively collaborating with NCCCS and other partners on multiple projects to enhance policies and services that will promote a seamless, inter-institutional educational experience and foster student success.

The Transfer Student Report<sup>1</sup> presented to the UNC Board of Governors (BoG) provides context, data, and analysis of transfer student success in the UNC system. This report focuses on:

- Volume and distribution of transfer students
- Student demographics
- Intended majors
- Graduation and progress rates
- Institutional partnerships

This report also provides details on four major transfer student initiatives underway now:

1. UNC GA and NCCCS are currently updating the Comprehensive Articulation Agreement, aiming to further align curriculum and ensure a seamless transition of credits between NCCCS and UNC institutions.
2. UNC GA is also collaborating with NCCCS in a program jointly funded by USA Funds, the Kresge Foundation, the Bill & Melinda Gates Foundation, and the Lumina Foundation on “reverse transfer.” This grant aids in developing processes to award associates degrees to students who complete their community college requirements while pursuing their baccalaureate degree at a UNC institution.
3. On a Lumina funded project, UNC GA is partnering with both NCCCS and NC Department of Public Instruction (DPI) that aligns high school common core and college readiness standards in English and mathematics.
4. UNC GA has engaged the North Carolina Higher Education Research Consortium (NC-HERC) and other research institutions to enhance evaluation and further development of transfer student policy and success.

---

<sup>1</sup> Definitions of terms used throughout the report are found in Appendix A.



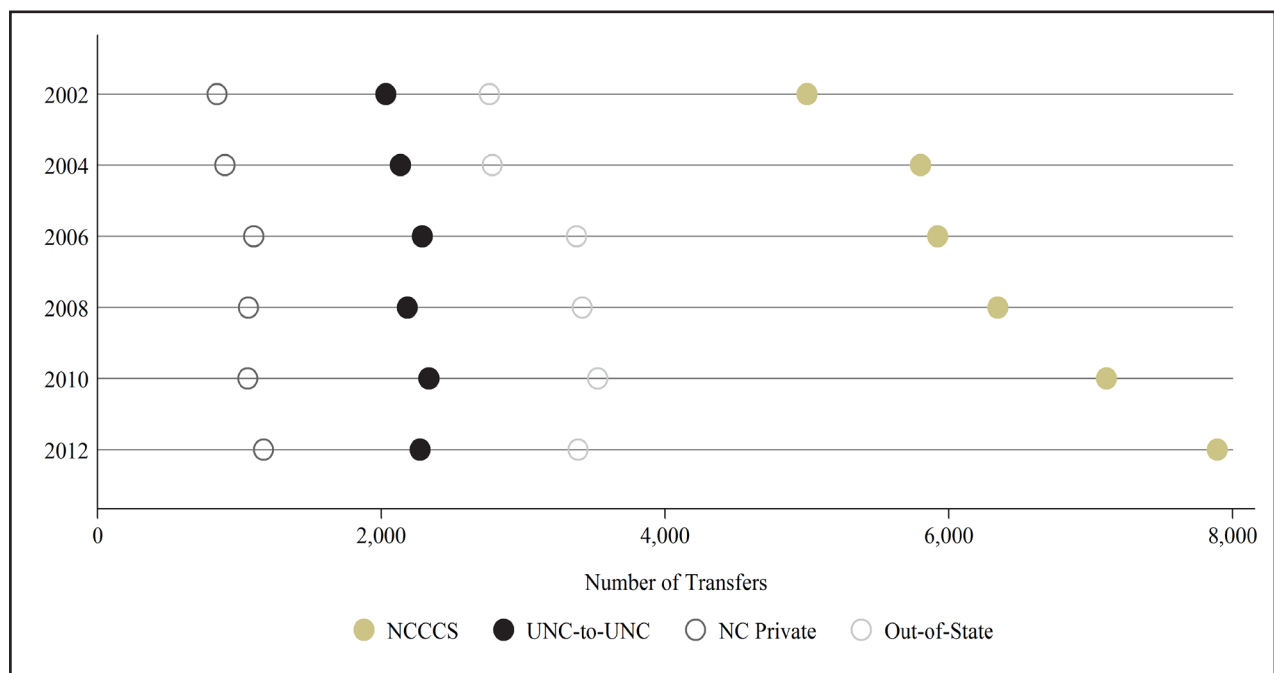
# UNC Transfer Student Enrollment Trends

UNC transfer students continue to make up a large segment of the overall UNC student body. In Fall 2012, there were nearly 44,000 students enrolled at UNC institutions that had transferred to a UNC institution at some point in their academic career.<sup>2</sup> This constitutes approximately 25%, or one in four, of the current UNC student population. Over the past five years, the newly enrolled undergraduate transfer student population increased 13% from 13,002 in Fall 2008 to 14,724 in Fall 2012.

The majority of newly enrolled transfer students (54%) come to UNC campuses from NCCCS, a system that has traditionally sent many transfers to UNC institutions. Over the last decade, enrollment of NCCCS transfers increased 59%, from 4,980 in Fall 2002 to 7,893 in Fall 2012. Driving this growth are significant increases in NCCCS transfers with an AA/AS degree, which grew from 975 in Fall 2002 to 2,225 in Fall 2012 (+128%). During this same period, non-NCCCS transfers also increased, from 5,603 in Fall 2002 to 6,831 in Fall 2012 (+22%). Out-of-state transfer students account for 23% of the Fall 2012 transfer students, over half of whom are North Carolinians.<sup>3</sup>

Figure 1 shows transfer student enrollment trends by origin of transfer (NCCCS, UNC campus, NC Private institution, or Out-of-State) and can be compared over time.<sup>4,5</sup>

Figure 1: *UNC Transfer Student Enrollment Trends - By Origin, Fall 2002 - Fall 2012*



2 Source: SDF.GR350/16JAN2013

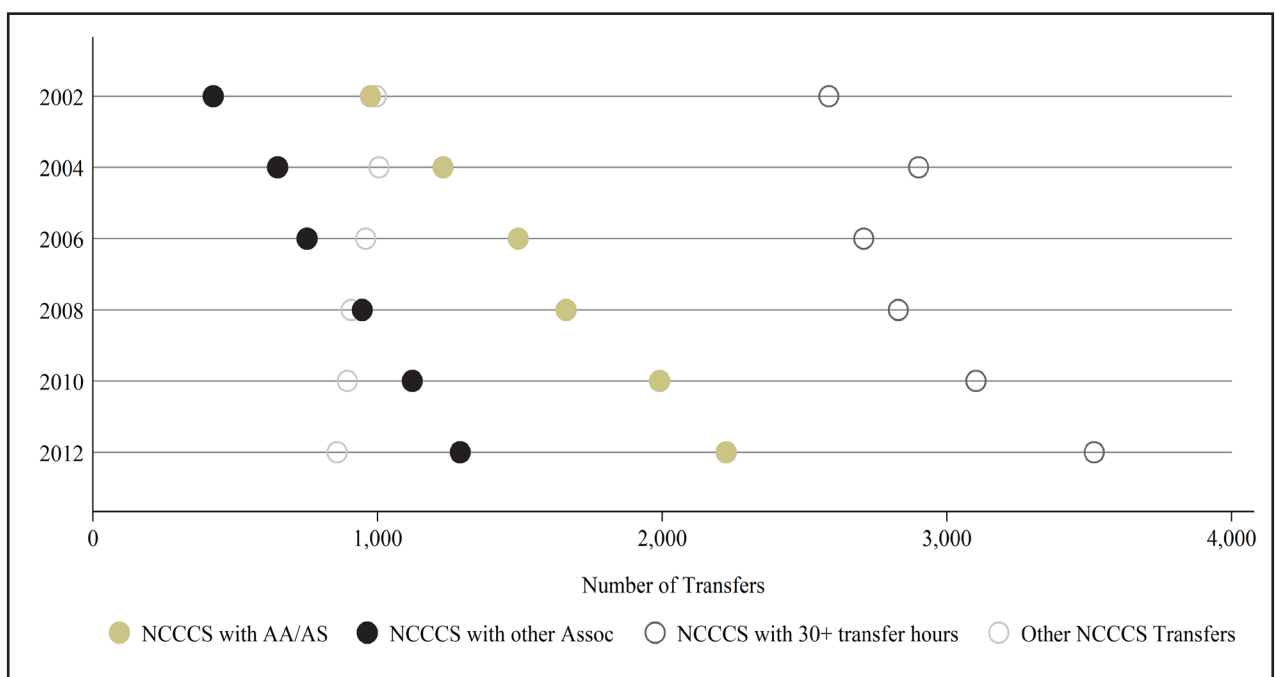
3 56% of out-of-state transfers claim North Carolina residency in their admissions documentations.

4 Annual totals of transfer students across all transfer types, can be found in Appendix B.

5 Fall 2012 transfer student enrollment data by campus can be found in Appendix C.

There are several substantive differences among transfer students from NCCCS, differences that have implications for the status in which they enter UNC institutions and their pathways to degree completion. The categories used throughout this report are NCCCS transfers with an Associate of Arts or Associate of Science (AA/AS), those with a non-AA/AS Associate degree, transfers with 30 or more hours and no degree, and students with fewer than 30 hours of college credit (Other NCCCS Transfers). As shown in Figure 2, over the last decade, all NCCCS categories increased except “Other NCCCS Transfers.” Figure 2 provides eleven years of data separated the four transfer categories.<sup>6</sup>

Figure 2: *UNC Transfer Student Enrollment Trends - NCCCS Categories, Fall 2002 - Fall 2012*



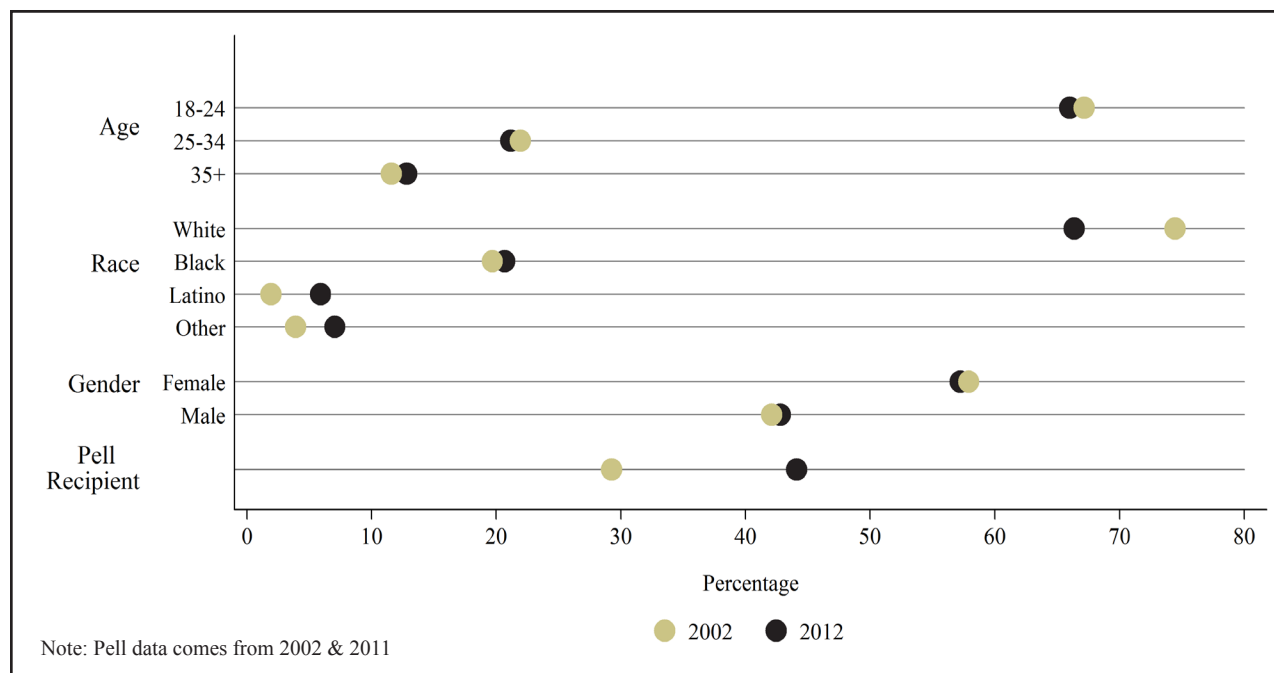
<sup>6</sup> Campus-specific data for all transfer students from Fall 2002 through Fall 2012 is provided in Appendix D.

# Demographics of UNC Transfer Students

Figure 3 shows the demographic composition of the UNC transfer student body.<sup>7</sup> Highlights in comparison to the overall UNC student population include:

- The majority of transfer students (66%) are under the age of 25, a relationship that remained stable over the past decade, while 84% of the UNC undergraduate population is under the age of 25.
- The racial and ethnic composition of the transfer student population mirrors that of UNC total undergraduate student demographics, with the majority being white, followed by black and Hispanic.
- The majority of transfer students are female (57%), comparable to the percentage of female students in the entire UNC population (56%).
- In Fall 2011, a larger proportion of transfer students were Pell recipients (44%), a number that has increased 15 percentage points over the last decade. Across the entire UNC undergraduate population, 41.5% received a Pell grant in Fall 2011.

Figure 3: *Demographics of UNC Transfer Student, Fall 2002 & Fall 2012*



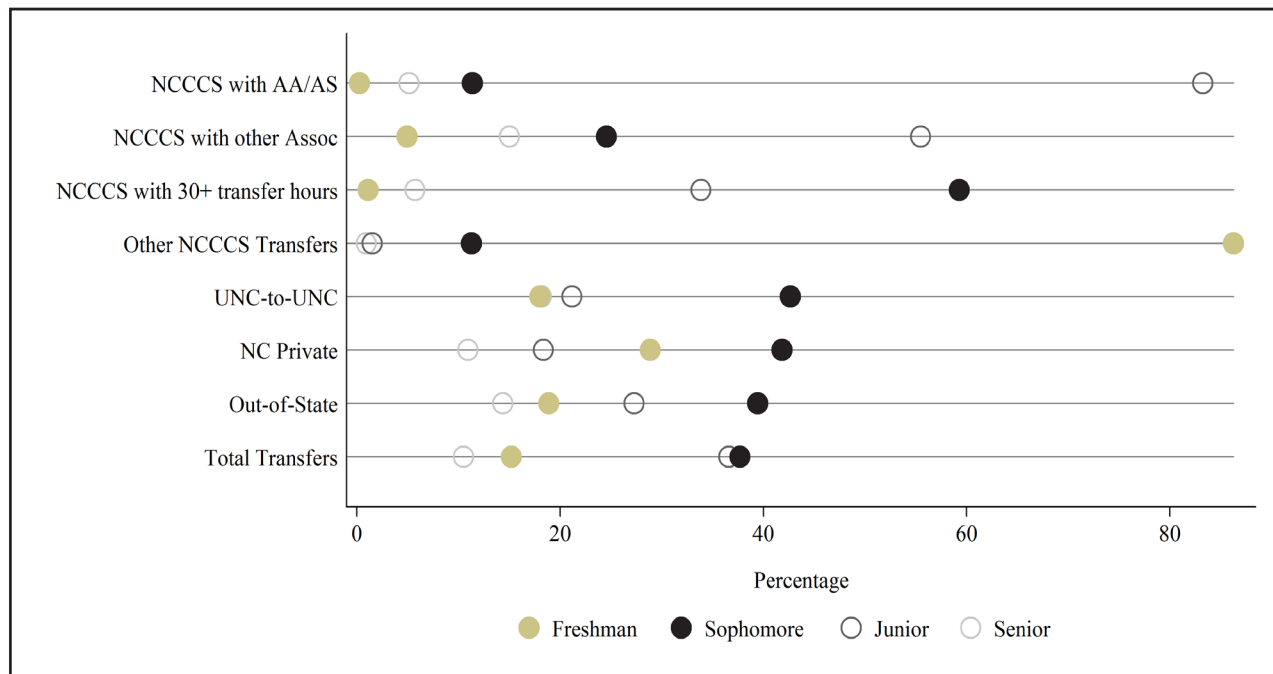
7 Source: UNC-GA IRA/SDF.PR012/23JAN13

## Entering Class Level

Admissions officers at UNC institutions review transfer applicant transcripts and admit students at different class levels: freshman, sophomore, junior, and senior. This process occurs at the institutional level with many decisions left to individual campuses. For example, a campus may choose not to award UNC credit for a NCCCS class in which a student received below a “C.”

Figure 4 displays the distribution of Fall 2012 entering transfer students.<sup>8</sup> This composition has stayed relatively stable over the past several years. Across all transfer types, the largest entry points are at the sophomore and junior level.

Figure 4: *UNC Transfer Student Entering Class Level, Fall 2012*



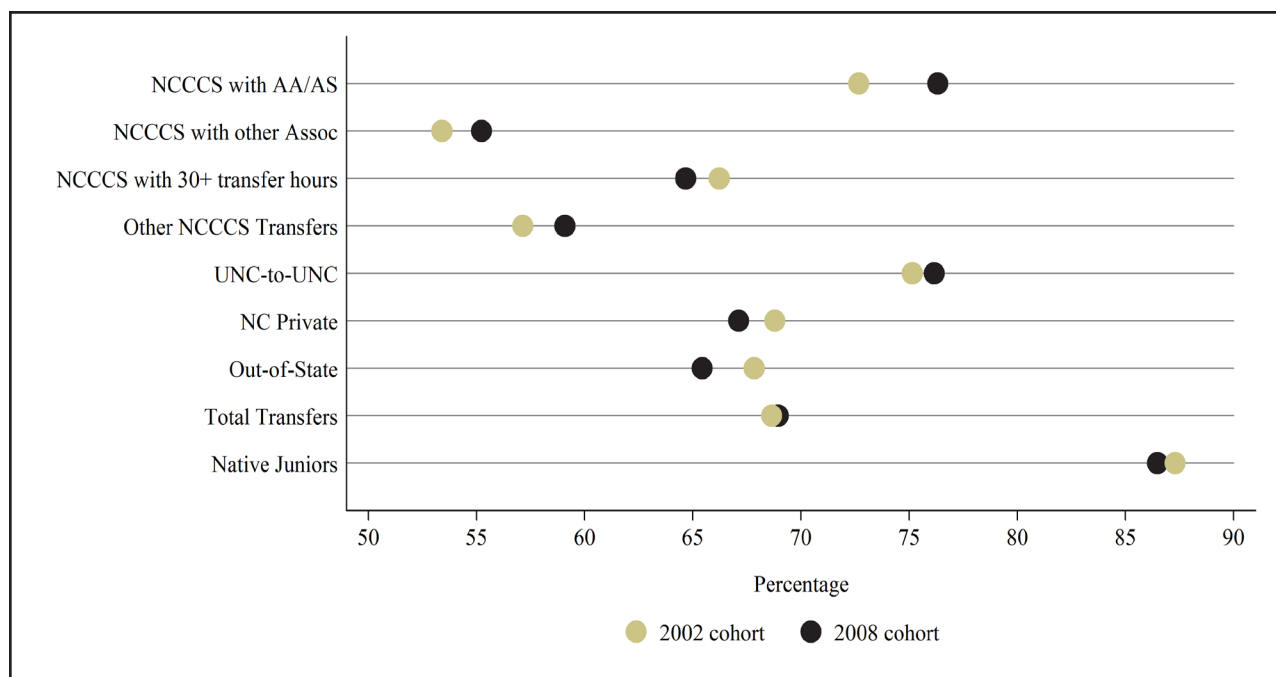
<sup>8</sup> Accompanying data is found in Appendix E.

## Graduation & Progress Rates

UNC GA tracks the graduation rates of all transfer students who enroll at a UNC institution.<sup>9</sup> One measure of particular import is the four-year graduation rate of transfer students who enter the UNC system as juniors. This rate is used to compare against the six-year graduation rate for first-time freshmen who are enrolled as juniors at a UNC institution (native juniors) to evaluate performance of both groups over time.

Figure 5 shows that the four-year graduation rate for juniors in the Fall 2002 and 2008 transfer student cohorts is 69%. These graduation rates include full-time and part-time students. For the Fall 2008 cohort, those students who transfer between UNC institutions and those that transferred from NCCCS with an AA or AS degree graduated at the highest rate, 76%. NCCCS transfer students with an Associate degree other than AA or AS had the lowest graduation rates at 55%. The four-year graduation rate for native juniors is 86%, 17% higher than the 2008 transfer student cohort's graduation rate.

Figure 5: *UNC Transfer Student Graduation Rates - Juniors, 2002 & 2008 Cohorts*



<sup>9</sup> Graduation data is found in Appendix F for all transfer class levels: freshmen (six-year), sophomores (five-year), juniors (four-year), and seniors (three-year).

## Transfer Student Declared Majors

Studies find that declaring a major is related to timely graduation, and indeed this proves true for UNC transfer students.<sup>10</sup> For transfer students that entered the UNC system in 2008, the four-year graduation rate for students when declaring a major upon entry was 71%, compared to 63% for those entering undeclared.

In the 2012 cohort, 73% of students declared a major upon entry, a 4% increase from 2008. Among all transfer students declaring a major, 40% selected a major in one of three fields. The top three fields for declared majors of transfer students are:

- Business (15%)
- Health Professions (15%)
- Education (10%)

Major selection, however, does vary across transfer type. For details on the percentage of majors by transfer type, please see Appendix G.

---

<sup>10</sup> For example, see “The Impact of Community College Attendance on Baccalaureate Attainment,” by Mariana Alfonso, 2006, *Research in Higher Education*, Volume 47, No. 8, p.873.

## Partnerships

Due to the importance of the long-standing and nationally recognized Comprehensive Articulation Agreement, UNC institutions developed relationships with particular community colleges.<sup>11</sup> To better understand these partnerships, UNC GA devised a measure to proxy “partnership strength.” This departs from measures frequently used by institutions that focus on the population *received*. Because no UNC campus receives over 30% of its transfers from a single institution and a NCCCS institution may send as much as 80% of their transfer students to a single UNC institution, we evaluate at the level of the *sending* institution. The following equation gives this measure which was calculated for every potential UNC-NCCCS relationship (n=928):

$$\text{Transfer relationship} = \frac{\text{Students received at UNC institution from NCCCS institution}}{\text{Total transfers from NCCCS institution}}$$

Because of the importance of geography in forming these relationships, a county heat map is provided for each UNC institution to show the relative intensity of these relationships. Appendix H provides a key for determining the locations and names of all 58 NCCCS colleges.

How to read the maps:

- Darker areas indicate stronger relationships between community colleges and UNC campuses with regards to facilitating transfer students.
- Because NCCCS’ 58 community colleges are each in a different county, these boundaries are used to represent these institutions.
  - White shades indicate counties with no community college.

Preliminary analyses conducted by UNC GA suggest that stronger relationships are related to a higher probability of graduation on time - controlling for other important factors. For six of our campuses - ASU, ECU, UNCC, UNCP, UNCW, and WCU - there are strong regional relationships with multiple community colleges proximate to the UNC campus. The second group (ECSU, FSU, NCSU, UNCA, UNCG, and WSSU) indicates less intensity but point towards opportunities for future growth. The third group (NCA&T, NCCU, UNC-CH, and UNCSA) has no discernible relationship between UNC and any community colleges. Note that for all UNC campuses, community college transfers come from across the state.

---

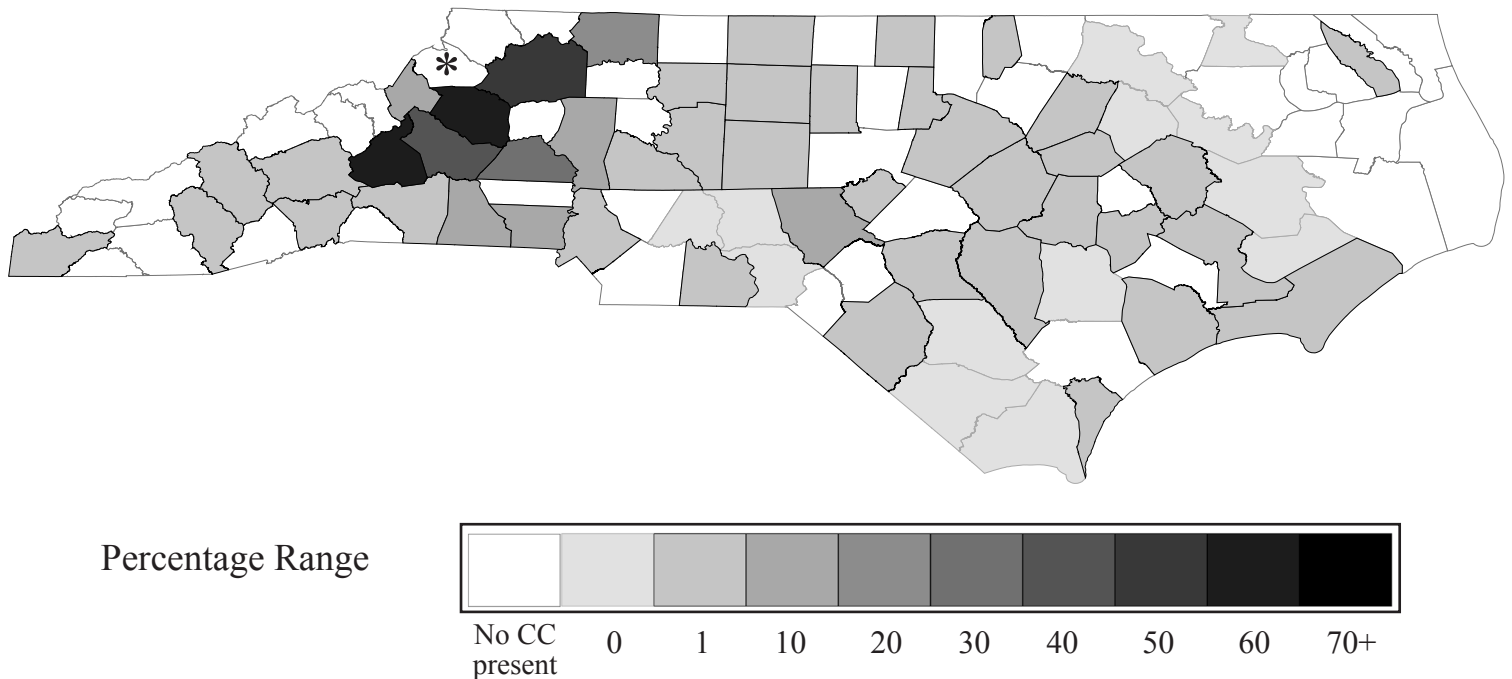
<sup>11</sup> UNC and NCCCS programs may also develop “bilateral agreements” which fosters the transfer of credits for students in programs not covered by the Comprehensive Articulation Agreement. For more information on these programs see: [http://www.nccommunitycolleges.edu/programs/bilateral\\_agreements.htm](http://www.nccommunitycolleges.edu/programs/bilateral_agreements.htm).

### *How to Read the Heat Map: Example of ASU*

There are 100 counties in North Carolina and 58 community colleges. In examining transfer relationships between UNC and NCCCS institutions, county boundaries are used to represent the location of a community college in the county. The 42 North Carolina counties that do not have a main community college campus within their boundaries are white on the map.<sup>12</sup>

The transfer relationship that may exist between ASU and community colleges throughout the state is calculated by the number of students transferring to ASU from community colleges divided by the total number of students transferring to all UNC institutions. In Fall 2012, transfer students from 45 North Carolina community colleges enrolled at ASU, which is located in Watauga county and does not have a community college campus (Watauga County is identified on the map with a star). The counties with the highest percent of community college transfer students enrolling at ASU are located directly to the east and south of Watauga County: Caldwell (65%), McDowell (62%), Wilkes (53%), Burke (42%), and Catawba (38%). The counties with the largest percent of community college transfer students enrolling at ASU are indicated by darker shades, with other community colleges throughout the state showing lower percentages of students transferring to ASU indicated by lighter shades.

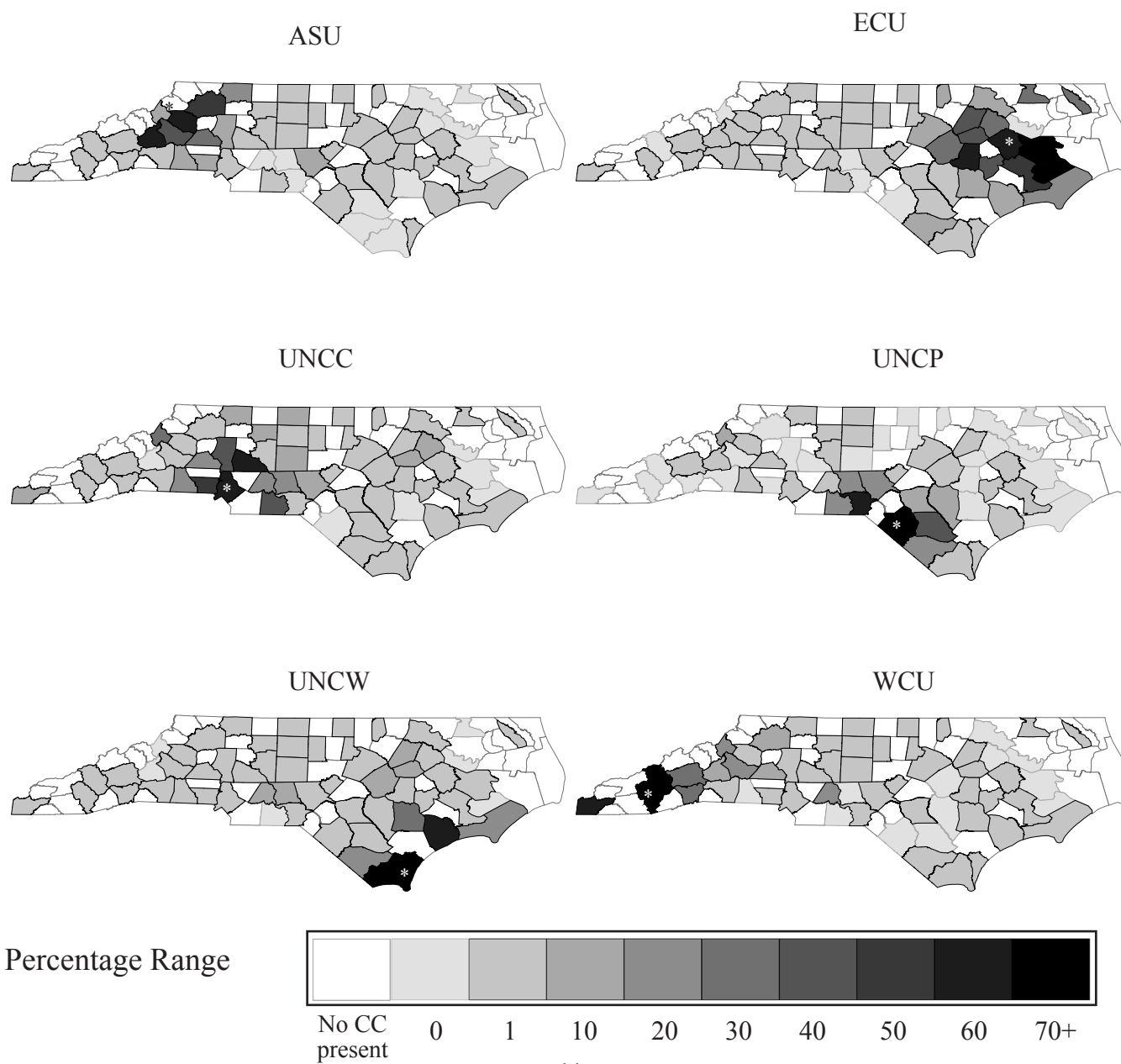
## ASU



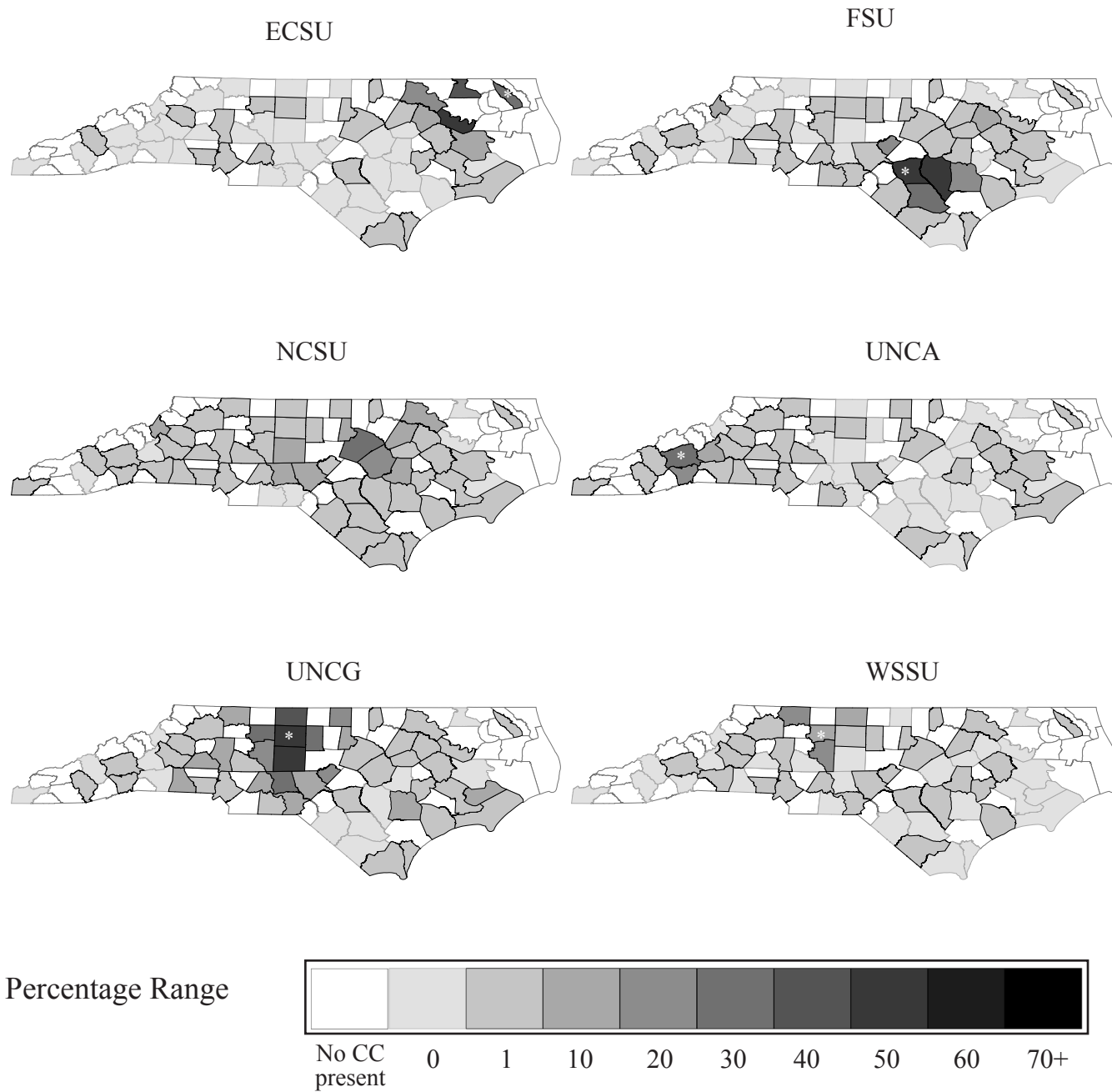
<sup>12</sup> The absence of a main community college campus within a county does not indicate that the county is devoid of a satellite campus or other activities supported by a North Carolina community college.



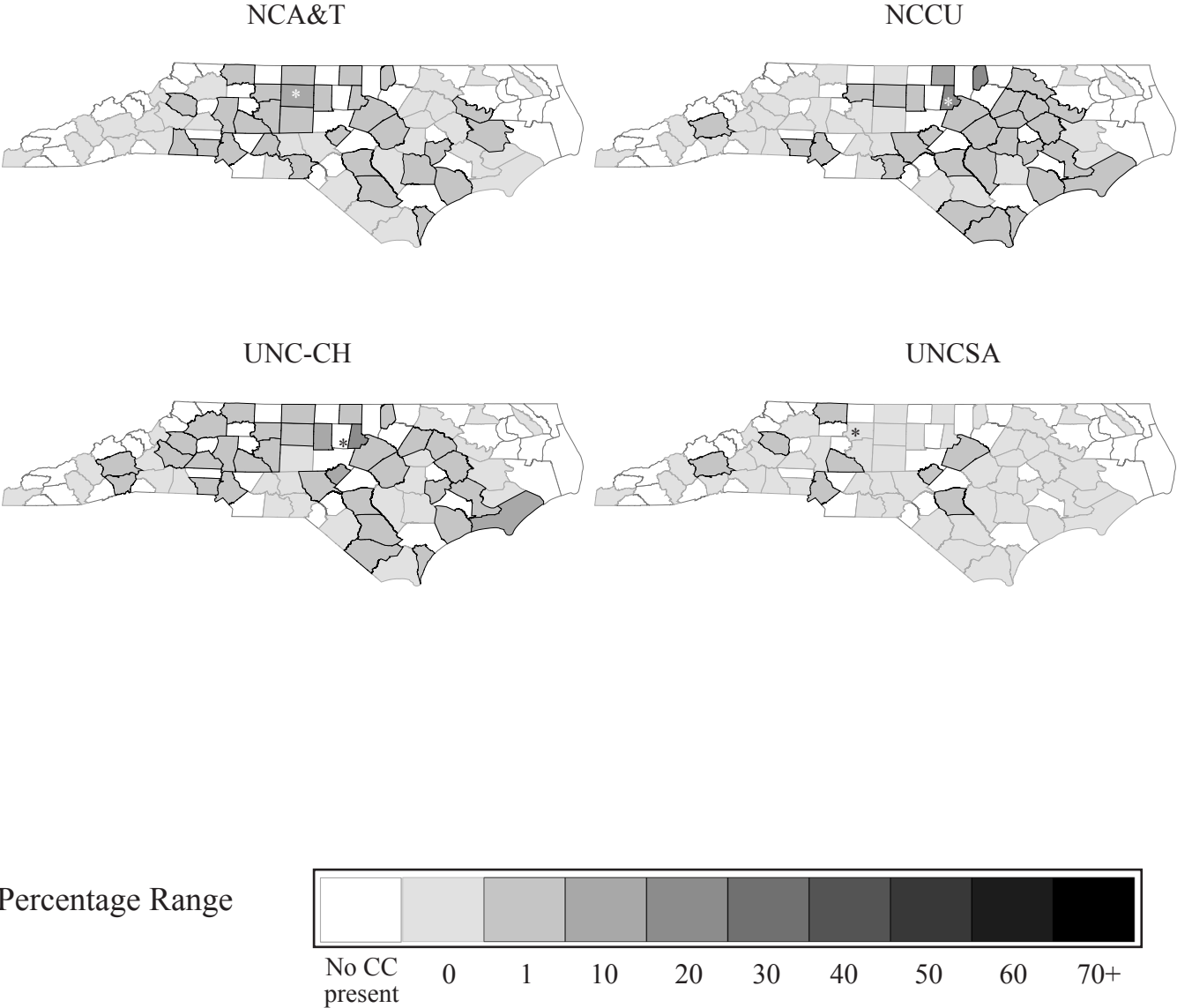
# UNC Institutions That Indicate Strong NCCCS Transfer Relationships, Fall 2012



# UNC Institutions With Moderately Strong NCCCS Transfer Relationships, Fall 2012



# UNC Institutions With No Discernible NCCCS Transfer Relationship, Fall 2012



## Other Transfer Initiatives Within UNC General Administration

### *Comprehensive Articulation Agreement*

The North Carolina Comprehensive Articulation Agreement (CAA) is a statewide agreement governing the transfer of credits between NCCCS and UNC institutions and has as its objective the smooth transfer of students. The CAA was originally implemented in 1997 by legislative mandate, was approved by the UNC Board of Governors and NC State Board of Community Colleges, and is currently undergoing a thorough review in order to enhance its ability to serve North Carolina transfer students. In 2013, a Director of Transfer Articulation was hired to manage the process within UNC GA and work closely with NCCCS counterparts to make recommendations for changes and enhancements. The goals of this process are to streamline credit evaluation, develop standards to streamline common barriers to student transfers, and assist the state-wide Transfer Advisory Committee (TAC) in all matters related to the CAA and transfer students at UNC institutions. The process is on target to meet deadlines outlined in UNC's Strategic Directions framework.

### *Credit Where It's Due Initiative*

The Credit Where It's Due Initiative is a joint effort between UNC and NCCCS funded by USA Funds, the Kresge Foundation, Gates Foundation, and Lumina Foundation to develop a process to award associates degrees to students that fulfill community college requirements while pursuing their baccalaureate degree at a UNC institution (also known as a reverse transfer process). In 2013, a Director of Reverse Transfer Programs was hired to work directly with NCCCS and UNC pilot campuses, conduct a gap analysis of policies and procedures, map courses between campuses in both education systems, and develop a shared technology solution for degree audits and notifications. Creating this reverse transfer process has three benefits: first, the number of degree completers in North Carolina will increase; second, upon awarding the credential, the community college will be able to count the early transfer student as a graduate; and third, the student receives a credential that he/she would not otherwise have received.

### *North Carolina Higher Education Research Consortium (NC-HERC)*

NC-HERC is a federally-funded project that brings together the UNC, NCCCS, and North Carolina Independent Colleges and Universities. NC-HERC has three broad goals: 1) to conduct sound research that informs policies and practices aimed at improving college student success in North Carolina; 2) to begin connecting researchers across the state who have an interest in college student success; and 3) to develop a long-term research agenda that serves the state of North Carolina and is sustained through external funding. To date, NC-HERC has brought together scholars

from across the state to discuss student success in general, with particular emphasis on analyzing transfer student performance across all colleges and universities. Transfer student data from all three systems have been shared with researchers and are currently being analyzed.

#### *Collaboration on Policy-Relevant Research*

In support of some of the above initiatives as well as ongoing evaluation and further development of transfer student policy and success, UNC General Administration has provided data and related support to a number of external researchers. The institutions they represent include North Carolina State University, University of North Carolina at Chapel Hill, Duke University, Columbia University, and University of Illinois at Urbana-Champaign.

## Appendix A - Definition of Terms

The terms used in this report might not be exactly the same as those used in other documents. Therefore, the following definitions are only for the purpose of this report:

- **Transfer students:** an undergraduate student entering a UNC institution for the first time but known to have previously attended a postsecondary institution at undergraduate level.
- **NCCCS transfers:** transfer students who last attended one of the 58 community colleges in North Carolina Community College System (NCCCS) before entering a UNC institution.
- **NCCCS transfers with AA/AS:** NCCCS transfers who were awarded with associate degrees including Associate in Arts (AA) and Associate in Science (AS) before entering a UNC institution.
- **NCCCS transfers with other associates:** NCCCS transfers who were awarded with an associate degree other than AA and AS including Associate in Applied Science (AAS), Associate in Fine Arts (AFA), and Associate in General Education (AGE) before entering a UNC institution. These degrees are not part of the Comprehensive Articulation Agreement (CAA) developed and implemented between the NCCCS and the University of North Carolina (UNC).
- **NCCCS transfers with 30 or more transfer hours:** NCCCS transfers who do not have an associate degree, but have 30 or more transferable hours when entering a UNC institution.
- **Other NCCCS transfers:** NCCCS transfers who do not have an associate degree but have less than 30 credit hours when entering a UNC institution.
- **UNC-to-UNC transfers:** transfer students who last attended one of the 16 UNC institutions before entering another UNC institution.
- **NC private transfers:** transfer students who last attended one of the North Carolina private institutions before entering a UNC institution.
- **Out-of-state transfers:** transfer students who last attended an institution outside of North Carolina before entering a UNC institution.
- **Class level:** upon admission, class level is evaluated and decided by UNC institutions based on transfer students course work, credit hours, GPA, and their selected fields.
- **UNC native juniors:** students that enrolled as first-time undergraduates at UNC and are first-time juniors at the start of the semester indicated in the tables.
- **Reverse Transfer:** a student's course credit is sent back to the community college for the purpose of evaluation for an associate degree while enrolled at an UNC institution.

## Appendix B - UNC Transfer Student Enrollment Trends, Fall 2002 - Fall 2012

Transfer Type	2002	2003	2004	2005	2006	2007	2008	2009	2010	2011	2012
All NCCCS	4,980	5,332	5,786	5,931	5,914	6,180	6,346	6,668	7,109	7,126	7,893
NCCCS with AA/AS	975	1,070	1,230	1,353	1,494	1,514	1,662	1,551	1,991	2,008	2,225
NCCCS with other Associate	423	533	649	738	753	890	947	938	1,122	1,144	1,291
NCCCS with 30+ transfer hours	2,586	2,598	2,901	2,701	2,708	2,801	2,829	3,254	3,102	3,194	3,518
Other NCCCS Transfers	996	1,131	1,006	1,139	959	975	908	925	894	780	859
UNC-to-UNC	2,022	2,104	2,127	2,297	2,285	2,184	2,184	2,193	2,335	2,170	2,274
NC Private	839	898	898	1,062	1,078	1,148	1,063	1,071	1,057	1,041	1,171
Out-of-State	2,742	2,770	2,773	2,994	3,372	3,325	3,409	3,586	3,525	3,347	3,386
TOTAL Transfers	10,583	11,104	11,584	12,284	12,649	12,837	13,002	13,518	14,026	13,684	14,724

Source: SDF IRA/Persist.PE003

Note: There are slight differences in the total number of transfer students reported this year over the prior year's numbers due to refinements in methodology. The 2011 Transfer Student Report included duplicated student headcount, whereas this report does not.

## Appendix C - UNC Transfer Student Enrollment by Campus, Fall 2012

Campus	All NCCCS	UNC-to-UNC	NC Private	Out-of-State	TOTAL
ASU	680	187	98	187	1,152
ECU	985	163	52	224	1,424
ECSU	88	16	18	79	201
FSU	311	76	75	301	763
NCAT	167	69	59	114	409
NCCU	208	102	43	124	477
NCSU	617	287	79	225	1,208
UNCA	184	45	24	72	325
UNC-CH	262	181	44	356	843
UNCC	1,360	397	241	568	2,566
UNCG	957	297	173	269	1,696
UNCP	279	42	56	113	490
UNCW	1,012	206	80	435	1,733
UNCSA	9	5	4	27	45
WCU	508	74	69	145	796
WSSU	266	127	56	147	596
TOTAL	7,893	2,274	1,171	3,386	14,724

Source: SDF IRA/Persist.PE003



## Appendix D - Campus Transfer Student Enrollment Trends, Fall 2002 - Fall 2012

### Appalachian State University

Transfer Type	2002	2003	2004	2005	2006	2007	2008	2009	2010	2011	2012
All NCCCS	389	394	489	482	475	538	583	591	548	536	680
NCCCS with AA/AS	97	88	125	129	116	140	162	140	172	167	208
NCCCS with other Associate	20	18	39	29	26	46	54	37	51	45	89
NCCCS with 30+ transfer hours	244	244	286	281	274	304	316	363	293	291	350
Other NCCCS Transfers	28	44	39	43	59	48	51	51	32	33	33
UNC-to-UNC	128	111	127	117	130	157	173	169	196	178	187
NC Private	75	72	63	66	68	81	105	97	90	79	98
Out-of-State	165	163	155	148	177	167	165	173	192	197	187
TOTAL Transfers	757	740	834	813	850	943	1,026	1,030	1,026	990	1,152

Source: SDF IRA/Persist.PE003

East Carolina University

Transfer Type	2002	2003	2004	2005	2006	2007	2008	2009	2010	2011	2012
All NCCCS	661	770	838	822	775	926	962	867	734	879	985
NCCCS with AA/AS	104	122	117	155	155	190	241	209	278	286	317
NCCCS with other Associate	48	104	121	138	156	175	198	174	122	168	167
NCCCS with 30+ transfer hours	389	447	484	430	352	442	412	438	310	401	477
Other NCCCS Transfers	120	97	116	99	112	119	111	46	24	24	24
UNC-to-UNC	191	176	191	220	250	231	219	183	169	162	163
NC Private	99	91	105	108	159	140	122	102	77	79	52
Out-of-State	244	237	227	259	386	367	359	261	216	235	224
TOTAL Transfers	1,195	1,274	1,361	1,409	1,570	1,664	1,662	1,413	1,196	1,355	1,424

Source: SDF IRA/Persist.PE003

Elizabeth City State University

Transfer Type	2002	2003	2004	2005	2006	2007	2008	2009	2010	2011	2012
All NCCCS	95	76	107	85	89	88	64	92	82	73	88
NCCCS with AA/AS	15	14	25	19	20	18	10	11	15	19	16
NCCCS with other Associate	18	3	13	14	16	24	7	12	13	10	21
NCCCS with 30+ transfer hours	32	28	40	26	21	14	12	11	22	14	23
Other NCCCS Transfers	30	31	29	26	32	32	35	58	32	30	28
UNC-to-UNC	23	23	19	25	18	20	23	17	19	25	16
NC Private	16	13	29	11	17	20	21	26	27	16	18
Out-of-State	52	51	56	48	65	54	75	67	74	62	79
TOTAL Transfers	186	163	211	169	189	182	183	202	202	176	201

Source: SDF IRA/Persist.PE003

# Fayetteville State University

Transfer Type	2002	2003	2004	2005	2006	2007	2008	2009	2010	2011	2012
All NCCCS	175	207	208	306	252	332	274	279	306	330	311
NCCCS with AA/AS	14	19	32	45	36	37	35	30	44	39	47
NCCCS with other Associate	31	40	37	75	69	110	95	90	105	107	99
NCCCS with 30+ transfer hours	20	29	82	2	104	137	108	129	138	130	118
Other NCCCS Transfers	110	119	57	184	43	48	36	30	19	54	47
UNC-to-UNC	70	61	40	105	76	86	48	63	46	44	76
NC Private	31	41	34	73	48	43	31	43	38	32	75
Out-of-State	168	132	135	212	291	243	211	211	240	259	301
TOTAL Transfers	444	441	417	696	667	704	564	596	630	665	763

Source: SDF IRA/Persist.PE003

# North Carolina A&T State University

Transfer Type	2002	2003	2004	2005	2006	2007	2008	2009	2010	2011	2012
All NCCCS	198	194	182	191	193	106	113	143	174	209	167
NCCCS with AA/AS	14	8	15	6	16	5	5	12	20	27	23
NCCCS with other Associate	23	17	29	32	33	19	25	22	31	42	29
NCCCS with 30+ transfer hours	98	46	16	31	13	32	40	41	68	88	75
Other NCCCS Transfers	63	123	122	122	131	50	43	68	55	52	40
UNC-to-UNC	70	83	75	88	87	49	48	81	87	99	69
NC Private	49	49	54	49	63	32	28	36	38	47	59
Out-of-State	147	167	154	176	201	129	76	102	115	116	114
TOTAL Transfers	464	493	465	504	544	316	265	362	414	471	409

Source: SDF IRA/Persist.PE003

# North Carolina Central University

Transfer Type	2002	2003	2004	2005	2006	2007	2008	2009	2010	2011	2012
All NCCCS	145	153	159	159	117	108	140	180	187	207	208
NCCCS with AA/AS	9	16	15	17	15	23	18	21	23	35	47
NCCCS with other Associate	8	21	24	37	20	19	25	29	37	47	41
NCCCS with 30+ transfer hours	63	61	75	77	46	45	60	67	91	69	60
Other NCCCS Transfers	65	55	45	28	36	21	37	63	36	56	60
UNC-to-UNC	91	69	74	83	61	36	53	75	109	82	102
NC Private	47	46	39	42	32	25	31	48	45	43	43
Out-of-State	101	105	102	98	116	89	84	129	106	112	124
TOTAL Transfers	384	373	374	382	326	258	308	432	447	444	477

Source: SDF IRA/Persist.PE003

# North Carolina State University

Transfer Type	2002	2003	2004	2005	2006	2007	2008	2009	2010	2011	2012
All NCCCS	420	435	407	382	415	422	444	499	545	456	617
NCCCS with AA/AS	98	139	130	134	146	125	119	138	176	157	220
NCCCS with other Associate	13	20	13	14	6	16	19	19	16	21	38
NCCCS with 30+ transfer hours	272	249	247	216	247	268	284	328	337	267	345
Other NCCCS Transfers	37	27	17	18	16	13	22	14	16	11	14
UNC-to-UNC	421	401	427	325	350	271	323	266	263	278	287
NC Private	89	76	73	160	152	161	151	79	97	70	79
Out-of-State	186	139	135	154	157	170	171	251	236	222	225
TOTAL Transfers	1,116	1,051	1,042	1,021	1,074	1,024	1,089	1,095	1,141	1,026	1,208

Source: SDF IRA/Persist.PE003

University of North Carolina Asheville

Transfer Type	2002	2003	2004	2005	2006	2007	2008	2009	2010	2011	2012
All NCCCS	169	113	110	138	147	140	156	157	190	183	184
NCCCS with AA/AS	44	34	41	56	57	60	64	60	76	85	72
NCCCS with other Associate	8	8	4	7	9	9	7	6	14	10	23
NCCCS with 30+ transfer hours	94	55	52	64	67	58	73	77	79	74	68
Other NCCCS Transfers	23	16	13	11	14	13	12	14	21	14	21
UNC-to-UNC	67	50	31	37	46	39	40	50	45	48	45
NC Private	41	31	18	16	23	23	20	27	28	23	24
Out-of-State	107	110	68	97	89	85	81	84	96	76	72
TOTAL Transfers	384	304	227	288	305	287	297	318	359	330	325

Source: SDF IRA/Persist.PE003



# University of North Carolina-Chapel Hill

Transfer Type	2002	2003	2004	2005	2006	2007	2008	2009	2010	2011	2012
All NCCCS	124	180	208	171	204	210	197	238	234	235	262
NCCCS with AA/AS	40	55	68	73	90	98	111	101	108	117	146
NCCCS with other Associate	3	9	13	9	7	12	13	14	9	15	10
NCCCS with 30+ transfer hours	73	105	111	76	94	76	64	101	98	97	102
Other NCCCS Transfers	8	11	16	13	13	24	9	22	19	6	4
UNC-to-UNC	155	216	233	249	261	232	220	184	233	175	181
NC Private	35	61	43	56	46	49	55	44	59	49	44
Out-of-State	335	372	344	351	366	301	311	312	396	332	356
TOTAL Transfers	649	829	828	827	877	792	783	778	922	791	843

Source: SDF IRA/Persist.PE003

# University of North Carolina Charlotte

Transfer Type	2002	2003	2004	2005	2006	2007	2008	2009	2010	2011	2012
All NCCCS	812	871	878	944	892	895	990	1,068	1,212	1,236	1,360
NCCCS with AA/AS	130	125	147	199	225	205	246	240	331	300	341
NCCCS with other Associate	83	86	92	87	97	82	119	106	150	144	159
NCCCS with 30+ transfer hours	460	464	451	503	433	432	443	541	519	588	653
Other NCCCS Transfers	139	196	188	155	137	176	182	181	212	204	207
UNC-to-UNC	283	290	317	348	309	324	295	348	348	331	397
NC Private	112	133	135	148	135	144	142	157	182	198	241
Out-of-State	458	479	479	478	570	670	730	766	724	640	568
TOTAL Transfers	1,665	1,773	1,809	1,918	1,906	2,033	2,157	2,339	2,466	2,405	2,566

Source: SDF IRA/Persist.PE003

University of North Carolina Greensboro

Transfer Type	2002	2003	2004	2005	2006	2007	2008	2009	2010	2011	2012
All NCCCS	471	465	513	537	702	674	745	761	842	845	957
NCCCS with AA/AS	93	70	106	102	142	136	171	138	220	219	218
NCCCS with other Associate	58	50	68	86	121	120	131	101	147	156	183
NCCCS with 30+ transfer hours	241	230	261	224	355	288	326	387	351	368	444
Other NCCCS Transfers	79	115	78	125	84	130	117	135	124	102	112
UNC-to-UNC	201	237	202	354	287	313	307	333	327	307	297
NC Private	93	117	85	120	117	134	121	138	121	111	173
Out-of-State	221	204	218	228	299	313	319	304	320	249	269
TOTAL Transfers	986	1,023	1,018	1,239	1,405	1,434	1,492	1,536	1,610	1,512	1,696

Source: SDF IRA/Persist.PE003

University of North Carolina Pembroke

Transfer Type	2002	2003	2004	2005	2006	2007	2008	2009	2010	2011	2012
All NCCCS	284	286	317	329	312	271	311	337	352	304	279
NCCCS with AA/AS	27	38	37	36	51	42	55	57	49	60	51
NCCCS with other Associate	46	53	73	78	75	74	64	104	96	84	100
NCCCS with 30+ transfer hours	103	79	149	154	93	96	121	128	135	112	92
Other NCCCS Transfers	108	116	58	61	93	59	71	48	72	48	36
UNC-to-UNC	40	57	63	47	70	54	57	51	75	52	42
NC Private	30	36	36	38	44	98	41	40	43	38	56
Out-of-State	73	70	85	83	95	53	140	150	115	105	113
TOTAL Transfers	427	449	501	497	521	476	549	578	585	499	490

Source: SDF IRA/Persist.PE003

# University of North Carolina Wilmington

Transfer Type	2002	2003	2004	2005	2006	2007	2008	2009	2010	2011	2012
All NCCCS	579	711	764	767	800	813	733	787	830	907	1,012
NCCCS with AA/AS	230	282	290	302	325	330	319	303	346	379	396
NCCCS with other Associate	11	25	22	34	25	35	25	40	56	89	91
NCCCS with 30+ transfer hours	312	354	399	376	406	377	336	396	364	391	421
Other NCCCS Transfers	26	50	53	55	44	71	53	48	64	48	104
UNC-to-UNC	158	193	166	161	190	157	197	190	199	190	206
NC Private	63	61	73	81	69	64	57	60	64	84	80
Out-of-State	231	250	281	274	339	260	292	316	319	341	435
TOTAL Transfers	1,031	1,215	1,284	1,283	1,398	1,294	1,279	1,353	1,412	1,522	1,733

Source: SDF IRA/Persist.PE003

# University of North Carolina School of the Arts

Transfer Type	2002	2003	2004	2005	2006	2007	2008	2009	2010	2011	2012
All NCCCS	7	8	6	9	3	11	10	5	11	10	9
NCCCS with AA/AS	1	2	-	-	-	2	3	-	2	1	1
NCCCS with other Associate	1	-	-	1	-	1	1	-	-	2	1
NCCCS with 30+ transfer hours	2	-	-	2	1	1	-	-	-	-	1
Other NCCCS Transfers	3	6	6	6	2	7	6	5	9	7	6
UNC-to-UNC	6	12	9	7	7	14	11	11	12	12	5
NC Private	-	1	3	1	4	2	4	1	3	9	4
Out-of-State	29	22	33	41	34	27	24	32	36	31	27
TOTAL Transfers	42	43	51	58	48	54	49	49	62	62	45

Source: SDF IRA/Persist.PE003

Western Carolina University

Transfer Type	2002	2003	2004	2005	2006	2007	2008	2009	2010	2011	2012
All NCCCS	259	307	358	360	401	408	370	378	492	454	508
NCCCS with AA/AS	47	48	65	62	86	88	88	74	114	91	97
NCCCS with other Associate	36	63	73	69	76	96	85	96	121	124	132
NCCCS with 30+ transfer hours	129	146	153	156	161	159	140	157	165	184	191
Other NCCCS Transfers	47	50	67	73	78	65	57	51	92	55	88
UNC-to-UNC	60	59	54	60	60	60	62	54	75	52	74
NC Private	31	32	33	43	42	44	67	71	53	69	69
Out-of-State	162	200	209	265	91	262	243	270	171	208	145
TOTAL Transfers	512	598	654	728	594	774	742	773	791	783	796

Source: SDF IRA/Persist.PE003

# Winston-Salem State University

Transfer Type	2002	2003	2004	2005	2006	2007	2008	2009	2010	2011	2012
All NCCCS	192	162	242	249	137	238	254	286	370	262	266
NCCCS with AA/AS	12	10	17	18	14	15	15	17	17	26	25
NCCCS with other Associate	16	16	28	28	17	52	79	88	154	80	108
NCCCS with 30+ transfer hours	54	61	95	83	41	72	94	90	132	120	98
Other NCCCS Transfers	110	75	102	120	65	99	66	91	67	36	35
UNC-to-UNC	58	66	99	71	83	141	108	118	132	135	127
NC Private	28	38	75	50	59	88	67	102	92	94	56
Out-of-State	63	69	92	82	96	135	128	158	169	162	147
TOTAL Transfers	341	335	508	452	375	602	557	664	763	653	596

Source: SDF IRA/Persist.PE003



## Appendix E - UNC Transfer Student Entering Class Level, Fall 2012

Transfer Type	Freshman	Sophomore	Junior	Senior	Total
All NCCCS	11%	35%	48%	7%	100%
NCCCS with AA/AS	0%	11%	83%	5%	100%
NCCCS with other Associate	5%	25%	55%	15%	100%
NCCCS with 30+ transfer hours	1%	59%	34%	6%	100%
Other NCCCS Transfers	86%	11%	2%	1%	100%
UNC-to-UNC	18%	43%	21%	18%	100%
NC Private	29%	42%	18%	11%	100%
Out-of-State	19%	39%	27%	14%	100%
TOTAL Transfers by Entry Class	15%	38%	37%	10%	100%

Source: SDF IRA/Persist.PE003

## Appendix F - Transfer Student Graduation Rates

### *UNC Freshmen Transfer Student Six-Year Graduation Rates*

Transfer Type	2002		2003		2004		2005		2006	
	N	%	N	%	N	%	N	%	N	%
All NCCCS	931	47	1,041	44	942	44	1,250	46	981	47
NCCCS with AA/AS	15	67	26	69	21	57	57	72	23	91
NCCCS with other Associate	79	47	86	48	80	46	155	43	109	57
NCCCS with 30+ transfer hours	35	69	42	45	38	58	44	55	23	52
Other NCCCS Transfers	802	46	887	43	803	43	994	45	826	45
UNC-to-UNC	423	52	447	46	418	56	549	49	532	53
NC Private	216	47	234	53	243	44	335	47	297	46
Out-of-State	618	51	637	46	597	49	809	48	811	48
TOTAL Transfers	2,188	49	2,359	46	2,200	48	2,943	47	2,621	48

Source: SDF IRA/Persist.PE003

## Appendix F

### *UNC Sophomore Transfer Student Five-Year Graduation Rates*

Transfer Type	2003		2004		2005		2006		2007	
	N	%	N	%	N	%	N	%	N	%
All NCCCS	2,054	59	2,354	60	2,161	62	2,284	61	2,416	63
NCCCS with AA/AS	134	72	161	66	133	68	199	67	245	74
NCCCS with other Associate	184	49	212	51	215	54	233	55	276	54
NCCCS with 30+ transfer hours	1,576	61	1,831	62	1,706	63	1,755	61	1,803	63
Other NCCCS Transfers	160	48	150	55	107	58	97	57	92	63
UNC-to-UNC	876	70	913	70	932	70	959	68	924	69
NC Private	377	59	389	62	399	66	443	62	473	63
Out-of-State	1,060	62	1,038	62	1,054	62	1,285	61	1,250	62
TOTAL Transfers	4,367	62	4,694	63	4,546	64	4,971	62	5,063	64

Source: SDF IRA/Persist.PE003

## Appendix F

### *UNC Transfer and Native Junior Student Four-Year Graduation Rates*

Student Type	2004		2005		2006		2007		2008	
	N	%	N	%	N	%	N	%	N	%
All NCCCS	2,247	66	2,328	65	2,422	67	2,473	67	2,718	69
NCCCS with AA/AS	1,015	71	1,133	70	1,229	72	1,206	74	1,352	76
NCCCS with other Associate	296	55	326	54	349	55	399	56	458	55
NCCCS with 30+ transfer hours	916	64	848	64	821	64	824	63	886	65
Other NCCCS Transfers	20	45	21	62	23	65	44	59	22	59
UNC-to-UNC	523	74	584	71	563	70	536	73	491	76
NC Private	172	69	215	70	225	64	248	65	216	67
Out-of-State	798	65	820	67	898	68	942	66	900	65
TOTAL Transfer Students	3,740	67	3,947	67	4,108	67	4,199	67	4,325	69
Native Junior	8,457	85	8,590	84	8,576	86	8,764	87	9,197	86

Source: SDF IRA/Persist.PE003, UNC-GA IRA/CCD.PE001B/15MAY13

## Appendix F

### *UNC Senior Transfer Student Three-Year Graduation Rates*

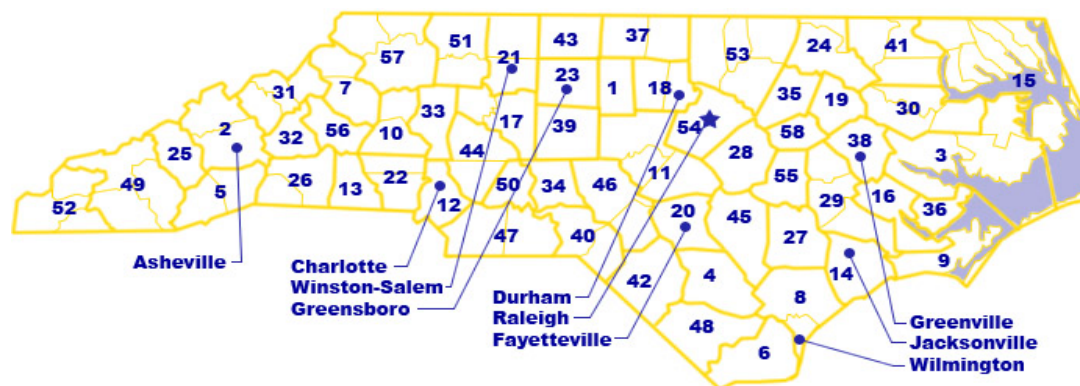
Transfer Type	2005		2006		2007		2008		2009	
	N	%	N	%	N	%	N	%	N	%
All NCCCS	192	49	227	48	324	49	409	56	419	58
NCCCS with AA/AS	30	47	43	53	38	55	60	57	72	72
NCCCS with other Associate	42	50	62	47	116	47	164	60	139	60
NCCCS with 30+ transfer hours	103	52	109	46	149	51	160	54	177	56
Other NCCCS Transfers	17	35	13	62	21	38	25	32	31	23
UNC-to-UNC	232	41	231	40	238	43	274	46	336	41
NC Private	113	39	113	28	145	41	116	45	151	30
Out-of-State	311	46	378	41	461	51	457	43	510	41
TOTAL Transfers by Entry Class	848	44	949	41	1,168	48	1,256	48	1,416	45

Source: SDF IRA/Persist.PE003

Appendix G - Transfer Students Declared Majors (Percentage), 2012 Cohort  
(Darker Shades Indicate Higher Values)

Major	NCCCS: AA/AS	NCCCS: Other Assoc.	Other NCCCS	UNC-to- UNC	NC Private	Out of State
Agriculture	1.0	0.6	1.3	1.5	0.6	0.8
Natural Resources & Conservation	1.5	0.7	1.2	0.8	0.7	1.6
Architecture	0.1	0.1	0.1	0.2	0.0	0.3
Cultural & Gender Studies	0.2	0.1	0.0	0.1	0.6	0.3
Communication & Journalism	5.0	1.5	4.3	4.1	5.1	4.4
Computer and Information Sciences	3.8	3.4	4.1	2.9	2.4	3.1
Education	13.2	12.8	11.4	7.7	8.7	6.1
Engineering	4.2	1.7	5.0	6.1	1.7	4.5
Engineering Tech. & Related Fields	0.5	8.7	2.3	1.0	1.4	2.3
Foreign Language & Literature	0.8	0.1	0.8	1.0	0.6	0.8
Family & Consumer Sciences	0.7	1.2	0.6	1.0	0.8	0.8
English Language & Literatures	2.2	0.6	1.5	1.3	1.6	2.1
Liberal Arts & Humanities	2.1	1.1	1.6	1.7	1.7	1.4
Biological & Biomedical Sciences	5.5	2.7	4.9	7.9	8.3	6.2
Mathematics & Statistics	1.8	0.1	0.6	1.3	1.0	1.4
Multi/Interdisciplinary Studies	1.4	1.1	1.5	1.1	0.7	1.2
Leisure Studies	2.9	0.6	4.1	6.2	8.0	4.8
Philosophy & Religious Studies	0.4	0.1	0.2	0.4	0.3	0.4
Physical Sciences	3.2	1.0	2.2	3.2	4.0	2.5
Psychology	6.6	2.5	5.4	4.8	7.2	5.5
Protective Services	3.0	7.5	3.7	3.4	3.6	3.1
Public Administration	4.3	4.6	3.0	2.3	3.3	2.6
Social Sciences	7.9	2.3	5.0	5.8	4.9	7.6
Transportation & Materials Moving	0.0	0.0	0.1	0.1	0.0	0.0
Visual & Performing Arts	3.0	3.0	3.8	3.4	4.3	5.1
Health Professions	5.4	27.7	14.4	15.4	13.7	15.1
Business	17.8	13.8	15.3	13.4	13.0	14.7
History	1.9	0.4	1.7	1.9	1.6	1.4
Percent Total by Transfer Type	100%	100%	100%	100%	100%	100%

## Appendix H - North Carolina Community College System Campuses



Source: [http://www.nccommunitycolleges.edu/colleges\\_map.aspx](http://www.nccommunitycolleges.edu/colleges_map.aspx)

- |  |   |                                       |
|--|---|---------------------------------------|
| 1 Alamance Community College                       | 20 Fayetteville Technical Community College | 39 Randolph Community College         |
| 2 Asheville–Buncombe Technical Community College   | 21 Forsyth Technical Community College      | 40 Richmond Community College         |
| 3 Beaufort County Community College                | 22 Gaston College                           | 41 Roanoke–Chowan Community College   |
| 4 Bladen Community College                         | 23 Guilford Technical Community College     | 42 Robeson Community College          |
| 5 Blue Ridge Community College                     | 24 Halifax Community College                | 43 Rockingham Community College       |
| 6 Brunswick Community College                      | 25 Haywood Community College                | 44 Rowan–Cabarrus Community College   |
| 7 Caldwell Community College & Technical Institute | 26 Isothermal Community College             | 45 Sandhills Community College        |
| 8 Cape Fear Community College                      | 27 James Sprunt Community College           | 46 Sampson Community College          |
| 9 Carteret Community College                       | 28 Johnston Community College               | 47 South Piedmont Community College   |
| 10 Catawba Valley Community College                | 29 Lenoir Community College                 | 48 Southeastern Community College     |
| 11 Central Carolina Community College              | 30 Martin Community College                 | 49 Southwestern Community College     |
| 12 Central Piedmont Community College              | 31 Mayland Community College                | 50 Stanly Community College           |
| 13 Cleveland Community College                     | 32 McDowell Technical Community College     | 51 Surry Community College            |
| 14 Coastal Carolina Community College              | 33 Mitchell Community College               | 52 Tri-County Community College       |
| 15 College of the Albemarle                        | 34 Montgomery Community College             | 53 Vance–Granville Community College  |
| 16 Craven Community College                        | 35 Nash Community College                   | 54 Wake Technical Community College   |
| 17 Davidson County Community College               | 36 Pamlico Community College                | 55 Wayne Community College            |
| 18 Durham Technical Community College              | 37 Piedmont Community College               | 56 Western Piedmont Community College |
| 19 Edgecombe Community College                     | 38 Pitt Community College                   | 57 Wilkes Community College           |
|  |   | 58 Wilson Community College           |