

# THE UNIVERSITY OF NORTH CAROLINA RETENTION & GRADUATION REPORT

---



**The University of North Carolina General Administration**

***April 2012***

## CONSTITUENT INSTITUTIONS OF THE UNIVERSITY OF NORTH CAROLINA

ASU	Appalachian State University
ECU	East Carolina University
ECSU	Elizabeth City State University
FSU	Fayetteville State University
NCA&T	North Carolina Agricultural & Technical State University
NCCU	North Carolina Central University
NCSU	North Carolina State University
UNCA	University of North Carolina at Asheville
UNC-CH	University of North Carolina at Chapel Hill
UNCC	University of North Carolina at Charlotte
UNCG	University of North Carolina at Greensboro
UNCP	University of North Carolina at Pembroke
UNCW	University of North Carolina at Wilmington
UNCSA	University of North Carolina School of the Arts
WCU	Western Carolina University
WSSU	Winston-Salem State University
NCSSM	North Carolina School of Science and Mathematics

<b>I. EXECUTIVE SUMMARY .....</b>	<b>1</b>
<b>II. RETENTION AND GRADUATION RATES .....</b>	<b>2</b>
2A. Freshman-to-Sophomore Retention.....	2
2B. Four-Year Graduation Rates.....	3
2C. Six-Year Graduation Rates.....	4
2D. Graduation Rates for Community College Transfer Students .....	5
<b>III. ALTERNATIVE MEASURES OF SUCCESS .....</b>	<b>6</b>
3A. Six-Year Student Success Measures from the Voluntary System of Accountability .....	6
3B. Bachelor's Degrees per 100 Full-time equivalent (FTE) Undergraduates .....	6
3C. Average Registered Semesters .....	8
<b>IV. GOALS.....</b>	<b>10</b>
<b>APPENDIX. CAMPUS DATA .....</b>	<b>1</b>

## I. EXECUTIVE SUMMARY

As a brief review of retention and graduation rate policy, in 2006 the Board of Governors revised Code Section 400.1.5 on *Improving Retention and Graduation Rates* and asked each campus to establish, in consultation with UNC-GA, goals for increasing retention and graduation rates for the period 2008-09 through 2012-13. The goals included:

- Freshman-to-sophomore year retention rates for first-time full-time freshmen
- Four-year graduation rates for first-time full-time freshmen
- Six-year graduation rates for first-time full-time freshmen
- Four-year graduation rates for North Carolina Community College System (NCCCS) associate's degree recipients who transferred to UNC institutions

It is important to understand the context for these measures. The measures are set by the US Department of Education. Data regarding these measures are collected and results made available for comparison purposes by the Integrated Postsecondary Education Data System (IPEDS). ***Not all undergraduates are included in the traditional IPEDS-reported measures.*** IPEDS measures include only first-time full-time freshmen enrolled in fall semester. Part-time freshmen, those who have transferred from one institution to another, and those who enrolled in spring are not included. The outcomes for these excluded students are less well known. This report hopes to add context and additional measures to provide perspective on UNC student success.

### HIGHLIGHTS:

- As a system, the University of North Carolina has a higher rate than both its public peers' average and the national average in all traditional IPEDS measures: retention (freshman-to-sophomore), four-year graduation rate, and six-year graduation rate.
- System-wide, freshman-to-sophomore retention rates reached a peak with the 2008 cohort at 82.7%. Since that time, a period characterized by the recession and by increasing satisfactory academic progress standards on a number of our campuses, retention rates have decreased slightly—approximately 0.6 percentage points. Despite the decline in recent years, current retention rates as compared to five years ago are higher.
- The traditional IPEDS four-year and six-year graduation rates have shown steady and consistent improvement.
- Not all undergraduates are included in the traditional IPEDS-reported measures; about 33% of the total fall 2011 undergraduates attending a UNC institution are excluded from the traditional IPEDS measures.
- Students who begin in an IPEDS cohort at one UNC institution and transfer to another UNC institution are tracked through internal UNC system records. This alternative tracking method, which captures a portion of those students not included in the traditional IPEDS cohort method, indicates steady improvement in both 4-year and 6-year graduation rates.

## II. RETENTION AND GRADUATION RATES

Important measures of student success include first-time full-time freshmen's retention to the sophomore year, four- and six-year graduation rates, and graduation rates for transfer students with an associate's degree from the community colleges.

Two factors are of growing significance. Students are transferring in greater numbers, and many of our freshmen transfer to another university; both groups of students may graduate at some point, but neither group—nearly 33% of the 2011 undergraduate students—is counted in the traditional IPEDS retention and graduation rates. The University of North Carolina has the ability to track students who transfer from a UNC campus to another UNC campus, but not students

who transfer to a private institution or out-of-state. However, the development of the National Student Clearinghouse now enables the University to track a larger portion of our students. For example, Appalachian State University has a six-year graduation rate of 65.7% for its 2004 cohort as measured by the traditional standard. If their freshmen are tracked within the whole University, the graduation rate jumps to 72.0%. If their freshmen are also tracked through the National Student Clearinghouse, then 75.6% graduate from some college or university within six years. Additionally, data show that another 9.6% are still enrolled and seeking a degree at ASU or another college or university.

### 2A. FRESHMAN-TO-SOPHOMORE RETENTION

"Freshman-to-sophomore retention" measures the percent of the first-time full-time freshmen at each campus in the fall of the cohort year who were enrolled at the same campus the following fall.

Nationally, the freshman-to-sophomore retention rate of public institutions averages approximately 79%.

Some freshmen initially enroll at one UNC institution but transfer to another UNC institution and are retained there. The overall retention rate within original institutions is 82.1% for the fall 2010 cohort. The rate retained by other UNC institution is 2.6%, making the system-wide retention rate 84.7%.

TABLE 2A. AN OVERVIEW OF RETENTION RATES OF UNC FIRST-TIME FULL-TIME FRESHMEN

	Original Institution	Any UNC Institution	Public Peers Average*
<b>Retention (Freshman-to-Sophomore)</b>			
<b>Fall 2006 Cohort</b>	81.1%	84.0%	76.9%
<b>Fall 2007 Cohort</b>	81.3%	84.2%	76.9%
<b>Fall 2008 Cohort</b>	82.7%	85.6%	77.6%
<b>Fall 2009 Cohort</b>	82.2%	85.1%	77.6%
<b>Fall 2010 Cohort</b>	82.1%	84.7%	**

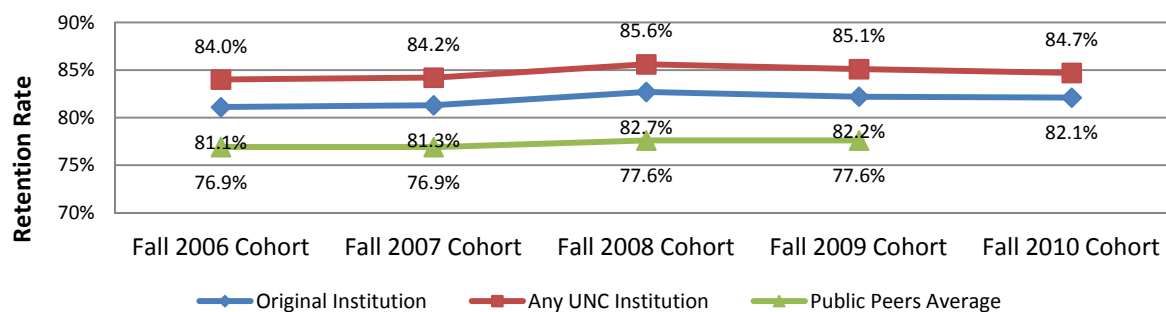
Source: SDF.ER001 & Peers.GR016E

\* UNC 2011 public peers (247 prior to 2010-11, 249 for 2010-11) are included in the comparison.

UNC public peers average should be compared against the rates at the original institution.

\*\* Data not available from IPEDS.

FIGURE 2A. RETENTION RATE OF UNC FIRST-TIME FULL-TIME FRESHMEN, FALL 2005 - FALL 2010



#### HIGHLIGHTS:

- For the University, the retention rate was 82.1% for the 2010 cohort, an improvement of 1.0% over a five-year period.
- Over a five-year period, eleven campuses have improved their freshman-to-sophomore retention rates. The largest improvement has been at WSSU, with an increase of 12.4%. (Please see Appendix for details).

## 2B. FOUR-YEAR GRADUATION RATES

“Four-year graduation rate” measures the time that has passed since students first enrolled as first-time full-time freshmen. Nationally, the four-year graduation rate of public institutions averages approximately 31%. Some freshmen initially enroll at one UNC institution and then transfer to another UNC

institution where they ultimately graduate. The overall 4-year graduation rate within original institutions is 37.4% for the fall 2010 cohort. The rate graduated by other UNC institutions is 1.4%, making the system-wide 4-year graduation rate 38.8%.

TABLE 2B. AN OVERVIEW OF GRADUATION RATES OF UNC FIRST-TIME FULL-TIME FRESHMEN

	Original Institution	Any UNC Institution	Public Peers Average*
<b>4-Year Graduation Rate</b>			
<b>Fall 2003 Cohort</b>	34.9%	36.3%	28.9%
<b>Fall 2004 Cohort</b>	35.0%	36.6%	29.5%
<b>Fall 2005 Cohort</b>	35.2%	36.7%	**
<b>Fall 2006 Cohort</b>	36.1%	37.5%	**
<b>Fall 2007 Cohort</b>	37.4%	38.8%	**

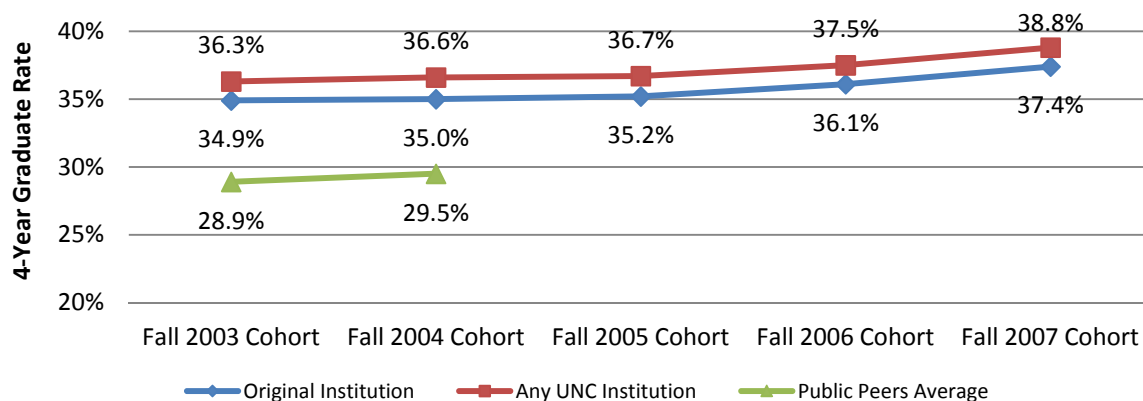
Source: SDF.ER001 & Peers.GR016E

\* UNC 2011 public peers (247 prior to 2010-11, 249 for 2010-11) are included in the comparison.

UNC public peers average should be compared against the rates at the original institution.

\*\* Data not available from IPEDS.

FIGURE 2B. 4-YEAR GRADUATION RATE OF UNC FIRST-TIME FULL-TIME FRESHMEN, FALL 2003 - FALL 2007



### HIGHLIGHTS:

- For the University, the four-year graduation rate was 37.4% for the fall 2007 cohort, an improvement of 2.5% over a five-year period.
- Over a five-year period, nine campuses have maintained or improved their four-year graduation rates. The largest improvement has been at UNCA, with an increase of 8.2%. (Please see Appendix for details).

## 2C. SIX-YEAR GRADUATION RATES

The six-year graduation rate has become the *de facto* measure for successful graduation, since many students take semesters off or change to part-time during some period of their enrollment. Nationally, the six-year graduation rate of public institutions averages approximately 56%.

Four point six percent of first-time full-time freshmen in the fall 2005 cohort transferred and

graduated from other UNC institutions. Given the size of the cohort, that is 1,373 students who graduated from a different campus within the University from the one they started at. The highest rate is at UNCA; 11.5% of their fall 2005 first-time full-time freshmen graduated from other UNC institutions within six years.

TABLE 2C. AN OVERVIEW ON GRADUATION RATES OF UNC FIRST-TIME FULL-TIME FRESHMEN

	Original Institution	Any UNC Institution	Public Peers Average*
<b>6-Year Graduation Rate</b>			
<b>Fall 2001 Cohort</b>	58.7%	63.4%	52.2%
<b>Fall 2002 Cohort</b>	58.8%	63.5%	52.6%
<b>Fall 2003 Cohort</b>	58.8%	63.4%	52.9%
<b>Fall 2004 Cohort</b>	59.0%	63.5%	53.3%
<b>Fall 2005 Cohort</b>	59.4%	64.0%	**

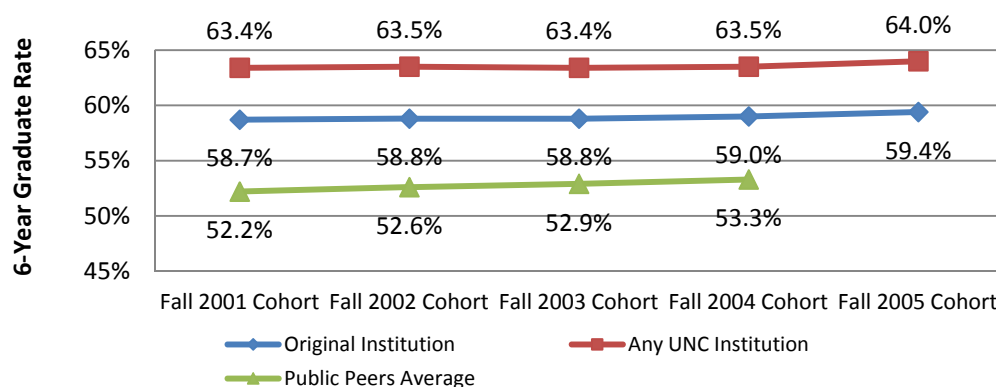
Source: SDF.ER001 & Peers.GR016E

\* UNC 2011 public peers (247 prior to 2010-11, 249 for 2010-11) are included in the comparison.

UNC public peers average should be compared against the rates at the original institution.

\*\* Data not available from IPEDS.

FIGURE 2C. 6-YEAR GRADUATION RATE OF UNC FIRST-TIME FULL-TIME FRESHMEN, FALL 2001 - FALL 2005



### HIGHLIGHTS:

- For the University, the six-year graduation rate was 59.4% for the fall 2005 cohort, an improvement of 0.7% over a five-year period.
- Over a five-year period, ten campuses have improved their six-year graduation rates. The largest improvement has been at UNCA, with an increase of 6.9%. (Please see Appendix for details).

## 2D. GRADUATION RATES FOR COMMUNITY COLLEGE TRANSFER STUDENTS

Since a growing number of students transfer from the North Carolina Community College System (NCCCS) into UNC and it is expected that the number of NCCCS

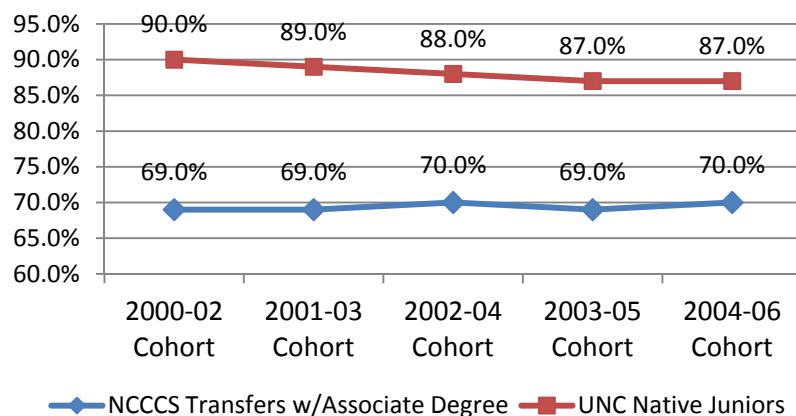
transfer students will continue to grow, UNC tracks the graduation rates of NCCCS associate's degree recipients who transferred to a UNC institution.

**TABLE 2D. FOUR-YEAR GRADUATION RATES OF NCCCS ASSOCIATE'S DEGREE RECIPIENTS WHO TRANSFERRED TO UNC INSTITUTIONS, 2000-2002 COHORT – 2006-08 COHORT**

Institution	Actual				2004-06 Cohort		Change from 2000-02 to 2004-06
	2000-02 Cohort	2001-03 Cohort	2002-04 Cohort	2003-05 Cohort	Actual	Native Jr Grad Rates	
UNC Total	70.0%	69.0%	70.0%	69.0%	70.0%	87.0%	0.0%

Source: Persist.PR003A

**FIGURE 2D. FOUR-YEAR GRADUATION RATES OF NCCCS TRANSFER STUDENTS WITH AN ASSOCIATE'S DEGREE VS. UNC NATIVE JUNIORS**



### HIGHLIGHTS:

- The four-year graduation rate of NCCCS transfer students with an associate's degree has remained at 70.0% when compared to the 2000-02 cohort.
- Over a five-year period, eight UNC campuses have maintained or improved their transfer students' graduation rate. The largest improvement is at UNCC, with an increase of 7.0%. (Please see Appendix for details).
- Since NCCCS transfer students with an associate's degree would most likely start at the junior level at UNC, the four-year graduation rates of UNC native juniors (87.0%) and the NCCCS transfer students with an associate's degree (70.0%) are provided for the 2002-04 cohort.



### III. ALTERNATIVE MEASURES OF SUCCESS

As previously mentioned, there are shortcomings to the traditional IPEDS measures of graduation rates. If a student transfers to another institution, he or she is considered a drop-out. Additionally, if students need to stop out for personal reasons but eventually

graduate, their success is not captured by the IPEDS measures. The following section is meant to provide additional context and perspective on the success of students.

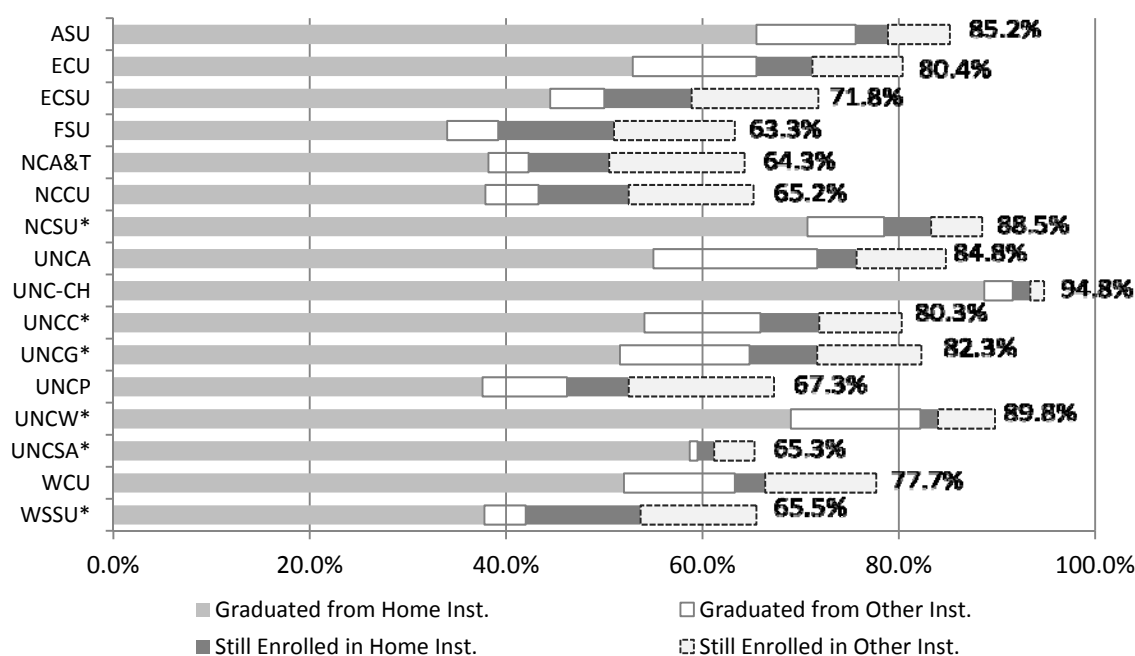
#### 3A. SIX-YEAR STUDENT SUCCESS MEASURES FROM THE VOLUNTARY SYSTEM OF ACCOUNTABILITY

UNC campuses are all members of the Voluntary System of Accountability (VSA), which was developed by a consortium of national organizations to standardize reporting of key educational data. VSA is another part of our providing context and perspectives on the traditional IPEDS measures of retention and graduation. VSA tracks the same cohort as IPEDS does, first-time full-time freshmen, and then measures whether they have graduated in six years or are still enrolled. However, their measure of student success includes all participating universities, public or private, inside or outside the state.

According to the VSA data, UNCG, for example, has a six-year graduation rate of 51.6% by the traditional measure. But 10.4% of their fall 2004 first-time full-

time freshman cohort graduated from another university within six years. So they have an “at any university” graduation rate of 62%. An additional 2.8% graduated from a two-year institution. VSA also tracks whether a student is still enrolled at the six-year point. Of UNCG’s original freshman cohort, 17.5% are still enrolled at UNCG or another college or university. These numbers together (graduated and still enrolled) constitute the VSA measure for student success, which for UNCG is 82.3%, a 30.7% change as compared to the traditional within-the-institution measure. VSA provides a fuller picture of what happens to students who leave one of our universities and gives a different perspective on “drop-outs.”

FIGURE 3A. UNC UNDERGRADUATE SIX-YEAR SUCCESS AND PROGRESS RATE, FIRST-TIME FULL-TIME STUDENTS WHO FIRST ENROLLED IN FALL 2004



\* Fall 2004 entering class data were not available. Fall 2003 entering class data were used.

### 3B. BACHELOR'S DEGREES PER 100 FULL-TIME EQUIVALENT (FTE) UNDERGRADUATES

"Bachelor's degrees per 100 FTE undergraduates" is an efficiency measure and looks at degree production in a given academic year relative to the average undergraduate FTE. Campuses that have a high value on this measure award high proportions of degrees in relation to the number of undergraduate FTE. This measure is more comprehensive than the traditional "timeliness" of degree completion measure (percent of students graduating in six years or less). Unlike the 6-year graduation measure, which includes only fall first-time full-time freshmen, this efficiency measure

captures the graduation outcomes of undergraduate students regardless of how or when they entered during an academic year.

Table 3B compares the number of bachelor's degrees produced per 100 FTE enrolled undergraduates between each UNC campus and the average of its public peers. To even out variations in enrollment, the undergraduate enrollment used is the average undergraduate enrollment over the previous six years for UNC campuses and for peers.

TABLE 3B. BACHELOR'S DEGREES PER 100 FTE UNDERGRADS, UNC INSTITUTIONS VS. SELECTED PUBLIC PEERS

Institution		2005-06	2006-07	2007-08	2008-09	2009-10	5-Year Change
ASU	UNC Rate	20.1	18.8	19.9	20.8	21.6	1.5
	Public Peer Average	21.2	21.2	21.3	21.7	21.8	
	Difference	-1.1	-2.4	-1.4	-0.9	-0.2	
ECU	UNC Rate	19.9	20.2	19.9	19.9	20.0	0.0
	Public Peer Average	20.4	20.4	20.2	20.4	20.7	
	Difference	-0.4	-0.3	-0.4	-0.5	-0.7	
ECSU	UNC Rate	14.7	14.8	15.5	14.9	15.0	0.3
	Public Peer Average	18.8	18.2	17.6	17.7	16.6	
	Difference	-4.1	-3.4	-2.1	-2.8	-1.6	
FSU	UNC Rate	16.8	15.4	16.5	16.0	17.7	0.9
	Public Peer Average	17.6	17.4	17.2	17.2	17.4	
	Difference	-0.8	-2.0	-0.7	-1.3	0.3	
NCA&T	UNC Rate	11.1	14.6	12.6	14.6	14.3	3.2
	Public Peer Average	18.2	18.8	19.0	19.1	19.3	
	Difference	-7.1	-4.2	-6.5	-4.6	-5.0	
NCCU	UNC Rate	14.5	14.9	15.5	14.1	13.3	-1.2
	Public Peer Average	19.9	19.5	20.0	19.7	19.2	
	Difference	-5.4	-4.6	-4.5	-5.5	-5.9	
NCSU	UNC Rate	20.5	21.3	20.6	20.6	21.0	0.4
	Public Peer Average	22.2	21.7	21.7	22.0	22.5	
	Difference	-1.7	-0.4	-1.1	-1.3	-1.5	
UNCA	UNC Rate	18.6	18.9	22.6	19.1	20.8	2.2
	Public Peer Average	20.5	20.4	20.3	20.7	20.2	
	Difference	-1.9	-1.5	2.2	-1.6	0.6	
UNC-CH	UNC Rate	23.1	23.0	24.7	24.9	25.3	2.2
	Public Peer Average	23.0	22.3	22.8	23.2	23.2	
	Difference	0.2	0.7	1.9	1.7	2.1	
UNCC	UNC Rate	21.1	21.7	22.8	22.4	22.3	1.2
	Public Peer Average	20.4	20.4	20.1	19.9	20.0	
	Difference	0.6	1.3	2.7	2.5	2.3	
UNCG	UNC Rate	20.2	20.4	21.0	20.3	20.2	0.0
	Public Peer Average	20.1	20.1	20.0	20.3	20.4	
	Difference	0.1	0.3	1.1	0.1	-0.1	
UNCP	UNC Rate	16.8	17.3	16.3	16.5	17.1	0.3
	Public Peer Average	18.3	18.4	18.2	17.9	17.8	
	Difference	-1.5	-1.1	-1.9	-1.4	-0.6	
UNCW	UNC Rate	23.2	22.7	24.1	23.7	24.5	1.3
	Public Peer Average	21.8	21.7	21.9	22.0	22.4	
	Difference	1.4	1.0	2.2	1.8	2.1	
WCU	UNC Rate	22.1	20.5	24.0	23.7	26.2	4.1
	Public Peer Average	20.3	20.3	20.2	20.9	20.6	
	Difference	1.7	0.3	3.8	2.8	5.6	
WSSU	UNC Rate	19.7	18.1	19.1	20.3	21.5	1.8
	Public Peer Average	17.0	16.7	16.4	16.4	15.9	
	Difference	2.7	1.4	2.6	3.9	5.6	

Source: Peers.GR017a11

#### HIGHLIGHT:

- Over a five-year period, all but one campus, NCCU, has seen gains in this measure. The largest improvement has been at WCU, with a gain of 4.1. (Please see Appendix for details.)

### 3C. AVERAGE REGISTERED SEMESTERS

The traditional IPEDS measure of graduation rates depends simply on the passage of time. In some people's minds, a six-year graduation rate may suggest that it took the full six-years, or twelve semesters, for a student to graduate. However, the six-year rate also captures those who may not have been enrolled in all semesters during the six-year period. These data in this section try to differentiate the six-year graduation rate by the number of semesters the student was actually enrolled. The data suggest that some

students who take the full six years to graduate do not enroll for some of the intervening terms.

Table 3C(1) displays, by campus, the average number of semesters registered by graduates in the six-year period who started as first-time full-time freshmen. The average number of semesters actually enrolled was 8.6, or less than one semester beyond that of traditional full-time students who graduate in four years.

TABLE 3C(1). AVERAGE REGISTERED SEMESTERS FOR UNC FIRST-TIME FULL-TIME FRESHMEN WHO GRADUATED IN AT LEAST SIX YEARS (FALL 2003 – FALL 2005)

Institution	2003		2004		2005		2003 through 2005	
	# of Grads	# of Regular Semesters Registered	# of Grads	# of Regular Semesters Registered	# of Grads	# of Regular Semesters Registered	# of Grads	# of Regular Semesters Registered
ASU	1,743	8.6	1,810	8.6	1,807	8.6	5,360	8.6
ECU	2,128	8.7	2,116	8.6	2,025	8.6	6,269	8.6
ECSU	220	8.9	248	8.9	259	9.0	727	8.9
FSU	276	9.1	271	9.3	271	9.3	818	9.2
NCA&T	872	9.0	878	9.1	953	9.1	2,703	9.1
NCCU	476	9.1	460	9.1	492	9.2	1,428	9.1
NCSU	2,993	8.7	2,930	8.7	3,280	8.7	9,203	8.7
UNCA	406	9.0	443	8.8	339	8.9	1,188	8.9
UNC-CH	3,031	8.0	3,204	8.1	3,394	8.1	9,629	8.1
UNCC	1,462	8.8	1,551	8.8	1,675	8.8	4,688	8.8
UNCG	1,191	8.7	1,289	8.7	1,427	8.8	3,907	8.8
UNCP	321	8.9	310	9.0	372	9.0	1,003	9.0
UNCW	1,355	8.5	1,388	8.4	1,429	8.4	4,172	8.4
UNCSA	77	8.0	66	7.9	99	8.1	242	8.0
WCU	816	8.7	915	8.7	862	8.6	2,593	8.7
WSSU	344	9.3	353	9.3	474	9.2	1,171	9.3
<b>UNC Total</b>	<b>17,711</b>	<b>8.6</b>	<b>18,232</b>	<b>8.6</b>	<b>19,158</b>	<b>8.6</b>	<b>55,101</b>	<b>8.6</b>
Minimum		8.0		7.9		8.1		8.0
Maximum		9.3		9.3		9.3		9.3

FIGURE 3C(1). AVERAGE REGISTERED SEMESTERS FOR UNC FIRST-TIME FULL-TIME FRESHMEN WHO GRADUATED IN AT LEAST SIX YEARS (FALL 2003 THROUGH FALL 2005 COHORTS)

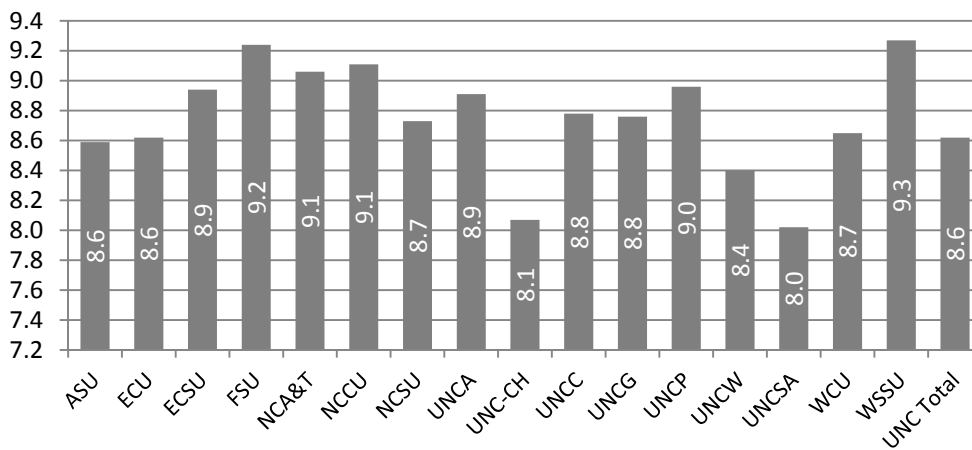
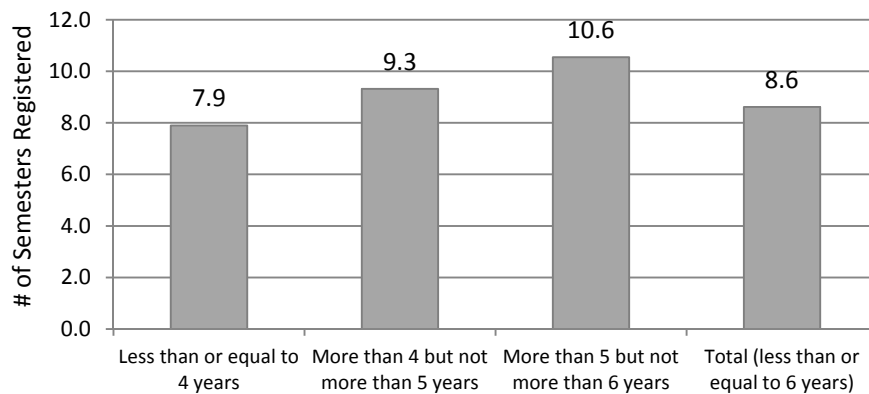


TABLE 3C(2). AVERAGE REGISTERED SEMESTERS FOR UNC FIRST-TIME FULL-TIME FRESHMEN WHO GRADUATED IN AT LEAST SIX YEARS (FALL 2002 THROUGH FALL 2004 COHORTS)

Time-to-Degree	# of Grads	Average # of Regular Semesters Registered
Less than or equal to 4 years	31,608	7.9
More than 4 but not more than 5 years	18,528	9.3
More than 5 but not more than 6 years	4,965	10.6
<b>Total (less than or equal to 6 years)</b>	<b>55,101</b>	<b>8.6</b>

FIGURE 3C(2). AVERAGE REGISTERED SEMESTERS FOR UNC FIRST-TIME FULL-TIME FRESHMEN WHO GRADUATED IN AT LEAST SIX YEARS (FALL 2003 THROUGH FALL 2005 COHORTS)



Source: SDF.GR256D.G

## IV. GOALS

As previously mentioned, this report is in response to the 2006 Board of Governors revised Code Section 400.1.5 on *Improving Retention and Graduation Rate*. Each campus was asked to establish, in consultation with UNC-GA, goals for increasing retention and graduation rates for the period 2008-09 through 2012-13. The goals included:

- Freshman-to-sophomore year retention rates for first-time full-time freshmen
- Four-year graduation rates for first-time full-time freshmen
- Six-year graduation rates for first-time full-time freshmen
- Four-year graduation rates for North Carolina Community College System (NCCCS) associate's-degree recipients who transferred to UNC institutions

In November 2010, the Board of Governors used these measures in discussing a performance model for enrollment funding for the 2011-12 legislative enrollment growth request. These measures were also considered during the budget reduction process during Summer 2011 for the 2011-12 fiscal year. UNC campuses are committed to relating enrollment and enrollment growth to successful performance in meeting their targets.

With the evolving higher education environment of increases in cost of attendance, reductions in need-based financial aid, reductions in the number of course sections offered, and reductions in campus budgets overall, UNC-GA will be discussing with campus Chancellors and Chief Academic Officers any recommended changes to the retention and graduation goals and the performance model for enrollment funding.

## APPENDIX. CAMPUS DATA

On the following pages, data are presented for each UNC campus under the following headings:

- “Retention and Graduation Rates, Targets, and Performance of First-Time Full-Time Freshmen,”
- “Four-Year Graduation Rates, Targets, and Performance of NCCCS Associate Degree Recipients Who Transferred to UNC Institutions,” and
- “Undergraduate 6-Year Success and Progress Rate, First-Time Full-Time Students Starting Fall 2004.”

## Appalachian State University

### Retention and Graduation Rates, Targets, and Performance of First-Time Full-Time Freshmen

	Actual Rates				
Retention	2006 Cohort	2007 Cohort	2008 Cohort	2009 Cohort	2010 Cohort
Initial Institution	85.8%	87.4%	86.4%	87.0%	87.6%
Any UNC Institution	88.8%	90.0%	89.3%	89.8%	90.4%
Public Peers Avg.	81.4%	80.8%	81.2%	81.7%	*

Goal	Difference
2010 Cohort	
88.0%	-0.4%

Goals	
2011 Cohort	2012 Cohort
90.0%	90.0%

4-Year Graduation	2003 Cohort	2004 Cohort	2005 Cohort	2006 Cohort	2007 Cohort
Initial Institution	37.3%	37.4%	38.3%	39.8%	41.5%
Any UNC Institution	39.6%	39.6%	40.8%	41.4%	43.6%
Public Peers Avg.	38.5%	38.5%	*	*	*

2007 Cohort	
43.0%	-1.5%

2008 Cohort	2009 Cohort
44.0%	45.0%

6-Year Graduation	2001 Cohort	2002 Cohort	2003 Cohort	2004 Cohort	2005 Cohort
Initial Institution	62.5%	64.0%	64.4%	65.7%	65.1%
Any UNC Institution	69.7%	71.6%	70.7%	72.0%	71.2%
Public Peers Avg.	61.4%	63.1%	64.0%	64.3%	*

2005 Cohort	
66.0%	-0.9%

2006 Cohort	2007 Cohort
67.0%	68.0%

Source: SDF.ER001, SCF.PPM001, & IPEDS

\* Data not available from IPEDS

### Four-Year Graduation Rates, Targets, and Performance of NCCCS Associate Degree Recipients Who Transferred to UNC Institutions

	Actual Rates				
Four-Year Grad Rate of NCCCS Transfers with Associate Degree	2000-02 Cohort	2001-03 Cohort	2002-04 Cohort	2003-05 Cohort	2004-06 Cohort
	75.0%	75.0%	74.0%	74.0%	75.0%

Source: Persist.PR003A & SCF.PPM001

Goal	Difference	Native Jr
2004-06 Cohort		
79.0%	-4.0%	89.0%

Goals	
2005-07 Cohort	2006-08 Cohort
79.0%	80.0%

### Undergraduate 6-Year Success and Progress Rate, First-Time Full-Time Students Starting Fall 2004

Graduated from Home Inst.	Graduated from Other Institution		Still Enrolled in Home Inst.	Still Enrolled in Other Inst.	Total Rate
	With 4-Yr Degree	With 2-Yr Degree			
65.5%	9.2%	0.9%	3.3%	6.3%	85.2%

Source: Voluntary System of Accountability (VSA), College Portrait web page

## East Carolina University

### Retention and Graduation Rates, Targets, and Performance of First-Time Full-Time Freshmen

	Actual Rates				
Retention	2006 Cohort	2007 Cohort	2008 Cohort	2009 Cohort	2010 Cohort
Initial Institution	77.3%	75.9%	78.8%	81.2%	81.0%
Any UNC Institution	80.3%	78.9%	81.4%	83.9%	83.5%
Public Peers Avg.	76.9%	78.8%	77.5%	78.6%	*

Goal	Difference
2010 Cohort	
82.0%	-1.0%

Goals	
2011 Cohort	2012 Cohort
82.5%	83.0%

4-Year Graduation	2003 Cohort	2004 Cohort	2005 Cohort	2006 Cohort	2007 Cohort
Initial Institution	29.9%	29.2%	32.5%	32.7%	30.8%
Any UNC Institution	31.2%	30.8%	33.8%	33.9%	32.1%
Public Peers Avg.	24.5%	25.8%	*	*	*

2007 Cohort	
32.5%	-1.7%

2008 Cohort	2009 Cohort
33.0%	33.5%

6-Year Graduation	2001 Cohort	2002 Cohort	2003 Cohort	2004 Cohort	2005 Cohort
Initial Institution	54.4%	54.3%	56.8%	56.0%	58.5%
Any UNC Institution	59.2%	59.1%	61.5%	61.3%	62.9%
Public Peers Avg.	51.1%	51.2%	51.9%	52.1%	*

2005 Cohort	
58.0%	0.5%

2006 Cohort	2007 Cohort
59.0%	60.0%

Source: SDF.ER001, SCF.PPM001, & IPEDS

\* Data not available from IPEDS

### Four-Year Graduation Rates, Targets, and Performance of NCCCS Associate Degree Recipients Who Transferred to UNC Institutions

	Actual Rates				
Four-Year Grad Rate of NCCCS Transfers with Associate Degree	2000-02 Cohort	2001-03 Cohort	2002-04 Cohort	2003-05 Cohort	2004-06 Cohort
	69.0%	68.0%	68.0%	69.0%	67.0%

Source: Persist.PR003A & SCF.PPM001

Goal	Difference	Native Jr
2004-06 Cohort		
72.5%	-5.5%	89.0%

Goals	
2005-07 Cohort	2006-08 Cohort
73.0%	74.0%

### Undergraduate 6-Year Success and Progress Rate, First-Time Full-Time Students Starting Fall 2004

Graduated from Home Institution	Graduated from Other Institution		Still Enrolled in Home Inst.	Still Enrolled in Other Inst.	Total Rate
	With 4-Yr Degree	With 2-Yr Degree			
52.9%	9.8%	2.8%	5.7%	9.2%	80.4%

Source: Voluntary System of Accountability (VSA), College Portrait web page



## Elizabeth City State University

### Retention and Graduation Rates, Targets, and Performance of First-Time Full-Time Freshmen

	Actual Rates				
Retention	2006 Cohort	2007 Cohort	2008 Cohort	2009 Cohort	2010 Cohort
Initial Institution	79.4%	76.7%	76.3%	73.6%	77.3%
Any UNC Institution	81.1%	80.4%	79.2%	77.1%	78.8%
Public Peers Avg.	72.7%	72.3%	73.8%	73.0%	*

Goal	Difference
2010 Cohort	
78.0%	-0.7%

Goals	
2011 Cohort	2012 Cohort
80.0%	80.0%

4-Year Graduation	2003 Cohort	2004 Cohort	2005 Cohort	2006 Cohort	2007 Cohort
Initial Institution	22.7%	19.2%	17.8%	16.9%	21.4%
Any UNC Institution	23.5%	19.7%	18.2%	17.0%	22.2%
Public Peers Avg.	20.5%	21.6%	*	*	*

2007 Cohort	
25.0%	-3.6%

2008 Cohort	2009 Cohort
26.0%	28.0%

6-Year Graduation	2001 Cohort	2002 Cohort	2003 Cohort	2004 Cohort	2005 Cohort
Initial Institution	50.7%	42.8%	45.8%	41.2%	43.7%
Any UNC Institution	53.4%	46.1%	47.9%	44.4%	46.8%
Public Peers Avg.	41.7%	41.6%	42.2%	42.9%	*

2005 Cohort	
47.0%	-3.3%

2006 Cohort	2007 Cohort
49.0%	52.0%

Source: SDF.ER001, SCF.PPM001, & IPEDS

\* Data not available from IPEDS

### Four-Year Graduation Rates, Targets, and Performance of NCCCS Associate Degree Recipients Who Transferred to UNC Institutions

	Actual Rates				
Four-Year Grad Rate of NCCCS Transfers with Associate Degree	2000-02 Cohort	2001-03 Cohort	2002-04 Cohort	2003-05 Cohort	2004-06 Cohort
	62.0%	64.0%	61.0%	61.0%	58.0%

Source: Persist.PR003A & SCF.PPM001

Goal	Difference	Native Jr
2004-06 Cohort		
68.0%	-10.0%	83.0%

Goals	
2005-07 Cohort	2006-08 Cohort
69.0%	70.0%

### Undergraduate 6-Year Success and Progress Rate, First-Time Full-Time Students Starting Fall 2004

Graduated from Home Inst.	Graduated from Other Institution		Still Enrolled in Home Inst.	Still Enrolled in Other Inst.	Total Rate
	With 4-Yr Degree	With 2-Yr Degree			
44.5%	4.9%	0.6%	8.9%	12.9%	71.8%

Source: Voluntary System of Accountability (VSA), College Portrait web page

## Fayetteville State University

### Retention and Graduation Rates, Targets, and Performance of First-Time Full-Time Freshmen

	Actual Rates				
Retention	2006 Cohort	2007 Cohort	2008 Cohort	2009 Cohort	2010 Cohort
Initial Institution	73.3%	69.3%	73.6%	69.1%	70.1%
Any UNC Institution	75.6%	73.3%	79.3%	74.4%	74.7%
Public Peers Avg.	70.0%	69.5%	70.3%	70.7%	*

Goal	Difference
2010 Cohort	
77.0%	-6.9%

Goals	
2011 Cohort	2012 Cohort
78.0%	80.0%

	2003 Cohort	2004 Cohort	2005 Cohort	2006 Cohort	2007 Cohort
4-Year Graduation					
Initial Institution	12.7%	11.4%	9.3%	11.8%	11.8%
Any UNC Institution	13.4%	11.8%	9.8%	12.5%	12.2%
Public Peers Avg.	19.8%	19.5%	*	*	*

2007 Cohort	
19.0%	-7.2%

2008 Cohort	2009 Cohort
21.0%	25.0%

	2001 Cohort	2002 Cohort	2003 Cohort	2004 Cohort	2005 Cohort
6-Year Graduation					
Initial Institution	35.6%	38.0%	31.5%	33.6%	30.5%
Any UNC Institution	38.7%	41.1%	34.8%	36.1%	32.7%
Public Peers Avg.	41.5%	41.9%	41.4%	41.1%	*

2005 Cohort	
45.0%	-14.5%

2006 Cohort	2007 Cohort
46.0%	47.0%

Source: SDF.ER001, SCF.PPM001, & IPEDS \* Data not available from IPEDS

### Four-Year Graduation Rates, Targets, and Performance of NCCCS Associate Degree Recipients Who Transferred to UNC Institutions

	Actual Rates				
Four-Year Grad Rate of NCCCS Transfers with Associate Degree	2000-02 Cohort	2001-03 Cohort	2002-04 Cohort	2003-05 Cohort	2004-06 Cohort
	61.0%	64.0%	63.0%	61.0%	61.0%

Goal	Difference	Native Jr
2004-06 Cohort		
62.0%	-1.0%	71.0%

Goals	
2005-07 Cohort	2006-08 Cohort
64.0%	65.0%

Source: Persist.PR003A & SCF.PPM001

### Undergraduate 6-Year Success and Progress Rate, First-Time Full-Time Students Starting Fall 2004

Graduated from Home Inst.	Graduated from Other Institution		Still Enrolled in Home Inst.	Still Enrolled in Other Inst.	Total Rate
	With 4-Yr Degree	With 2-Yr Degree			
34.0%	4.1%	1.1%	11.8%	12.3%	63.3%

Source: Voluntary System of Accountability (VSA), College Portrait web page

## North Carolina Agricultural & Technical State University

### Retention and Graduation Rates, Targets, and Performance of First-Time Full-Time Freshmen

	Actual Rates				
Retention	2006 Cohort	2007 Cohort	2008 Cohort	2009 Cohort	2010 Cohort
Initial Institution	71.7%	73.6%	78.3%	72.4%	74.3%
Any UNC Institution	74.3%	74.8%	79.6%	74.7%	75.9%
Public Peers Avg.	75.0%	74.9%	75.8%	76.3%	*

Goal	Difference
2010 Cohort	
76.5%	-2.2%

Goals	
2011 Cohort	2012 Cohort
77.0%	80.0%

	2003 Cohort	2004 Cohort	2005 Cohort	2006 Cohort	2007 Cohort
4-Year Graduation					
Initial Institution	17.5%	15.1%	16.5%	16.4%	16.0%
Any UNC Institution	17.7%	15.5%	16.8%	16.6%	16.1%
Public Peers Avg.	22.3%	23.0%	*	*	*

2007 Cohort	
23.0%	-7.0%

2008 Cohort	2009 Cohort
25.0%	28.0%

	2001 Cohort	2002 Cohort	2003 Cohort	2004 Cohort	2005 Cohort
6-Year Graduation					
Initial Institution	41.4%	37.7%	37.2%	38.3%	40.6%
Any UNC Institution	42.9%	39.7%	39.3%	39.8%	42.6%
Public Peers Avg.	48.4%	48.7%	49.4%	49.3%	*

2005 Cohort	
46.0%	-5.4%

2006 Cohort	2007 Cohort
48.0%	50.0%

Source: SDF.ER001, SCF.PPM001, & IPEDS \* Data not available from IPEDS

### Four-Year Graduation Rates, Targets, and Performance of NCCCS Associate Degree Recipients Who Transferred to UNC Institutions

	Actual Rates				
Four-Year Grad Rate of NCCCS Transfers with Associate Degree	2000-02 Cohort	2001-03 Cohort	2002-04 Cohort	2003-05 Cohort	2004-06 Cohort
	56.0%	50.0%	53.0%	49.0%	58.0%

Source: Persist.PR003A & SCF.PPM001

Goal	Difference	Native Jr
2004-06 Cohort		
52.0%	6.0%	71.0%

Goals	
2005-07 Cohort	2006-08 Cohort
53.0%	54.0%

### Undergraduate 6-Year Success and Progress Rate, First-Time Full-Time Students Starting Fall 2004

Graduated from Home Inst.	Graduated from Other Institution		Still Enrolled in Home Inst.	Still Enrolled in Other Inst.	Total Rate
	With 4-Yr Degree	With 2-Yr Degree			
38.2%	3.1%	1.0%	8.2%	13.8%	64.3%

Source: Voluntary System of Accountability (VSA), College Portrait web page

## North Carolina Central University

### Retention and Graduation Rates, Targets, and Performance of First-Time Full-Time Freshmen

	Actual Rates				
Retention	2006 Cohort	2007 Cohort	2008 Cohort	2009 Cohort	2010 Cohort
Initial Institution	77.3%	71.6%	77.0%	69.2%	67.7%
Any UNC Institution	79.8%	74.0%	80.5%	73.4%	70.9%
Public Peers Avg.	71.8%	70.6%	72.3%	70.6%	*

Goal	Difference
2010 Cohort	
78.0%	-10.3%

Goals	
2011 Cohort	2012 Cohort
79.0%	80.0%

	2003 Cohort	2004 Cohort	2005 Cohort	2006 Cohort	2007 Cohort
4-Year Graduation					
Initial Institution	18.5%	18.0%	15.1%	14.8%	15.0%
Any UNC Institution	19.3%	18.5%	15.9%	15.2%	15.4%
Public Peers Avg.	19.9%	20.8%	*	*	*

2007 Cohort	
25.0%	-10.0%

2008 Cohort	2009 Cohort
27.0%	30.0%

	2001 Cohort	2002 Cohort	2003 Cohort	2004 Cohort	2005 Cohort
6-Year Graduation					
Initial Institution	48.3%	47.9%	44.4%	38.3%	38.4%
Any UNC Institution	50.9%	50.7%	46.5%	40.8%	41.6%
Public Peers Avg.	44.5%	44.0%	44.8%	44.2%	*

2005 Cohort	
52.0%	-13.6%

2006 Cohort	2007 Cohort
53.0%	55.0%

Source: SDF.ER001, SCF.PPM001, & IPEDS \* Data not available from IPEDS

### Four-Year Graduation Rates, Targets, and Performance of NCCCS Associate Degree Recipients Who Transferred to UNC Institutions

	Actual Rates				
Four-Year Grad Rate of NCCCS Transfers with Associate Degree	2000-02 Cohort	2001-03 Cohort	2002-04 Cohort	2003-05 Cohort	2004-06 Cohort
	64.0%	58.0%	55.0%	53.0%	60.0%

Goal	Difference	Native Jr
2004-06 Cohort		
65.0%	-5.0%	78.0%

Goals	
2005-07 Cohort	2006-08 Cohort
66.0%	67.0%

Source: Persist.PR003A & SCF.PPM001

### Undergraduate 6-Year Success and Progress Rate, First-Time Full-Time Students Starting Fall 2004

Graduated from Home Inst.	Graduated from Other Institution		Still Enrolled in Home Inst.	Still Enrolled in Other Inst.	Total Rate
	With 4-Yr Degree	With 2-Yr Degree			
37.9%	4.8%	0.6%	9.2%	12.7%	65.2%

Source: Voluntary System of Accountability (VSA), College Portrait web page

## North Carolina State University

### Retention and Graduation Rates, Targets, and Performance of First-Time Full-Time Freshmen

	Actual Rates				
Retention	2006 Cohort	2007 Cohort	2008 Cohort	2009 Cohort	2010 Cohort
Initial Institution	89.2%	89.6%	90.9%	89.5%	89.4%
Any UNC Institution	91.7%	91.8%	93.1%	92.0%	91.1%
Public Peers Avg.	89.8%	90.1%	90.3%	90.6%	*

Goal	Difference
2010 Cohort	
91.0%	-1.6%

Goals	
2011 Cohort	2012 Cohort
91.5%	91.5%

	2003 Cohort	2004 Cohort	2005 Cohort	2006 Cohort	2007 Cohort
4-Year Graduation					
Initial Institution	41.5%	41.3%	40.8%	39.3%	41.3%
Any UNC Institution	43.3%	43.1%	42.4%	40.7%	42.9%
Public Peers Avg.	47.8%	48.7%	*	*	*

2007 Cohort	
42.0%	-0.7%

2008 Cohort	2009 Cohort
43.0%	43.0%

	2001 Cohort	2002 Cohort	2003 Cohort	2004 Cohort	2005 Cohort
6-Year Graduation					
Initial Institution	69.6%	71.5%	73.2%	72.4%	72.4%
Any UNC Institution	73.5%	76.0%	78.0%	76.5%	77.4%
Public Peers Avg.	74.4%	75.6%	76.3%	77.3%	*

2005 Cohort	
73.0%	-0.6%

2006 Cohort	2007 Cohort
73.5%	74.0%

Source: SDF.ER001, SCF.PPM001, & IPEDS \* Data not available from IPEDS

### Four-Year Graduation Rates, Targets, and Performance of NCCCS Associate Degree Recipients Who Transferred to UNC Institutions

	Actual Rates				
Four-Year Grad Rate of NCCCS Transfers with Associate Degree	2000-02 Cohort	2001-03 Cohort	2002-04 Cohort	2003-05 Cohort	2004-06 Cohort
	74.0%	72.0%	75.0%	76.0%	77.0%

Goal	Difference	Native Jr
2004-06 Cohort		
73.0%	4.0%	89.0%

Goals	
2005-07 Cohort	2006-08 Cohort
73.5%	73.5%

Source: Persist.PR003A & SCF.PPM001

### Undergraduate 6-Year Success and Progress Rate, First-Time Full-Time Students Starting Fall 2003

Graduated from Home Inst.	Graduated from Other Institution		Still Enrolled in Home Inst.	Still Enrolled in Other Inst.	Total Rate
	With 4-Yr Degree	With 2-Yr Degree			
70.7%	7.1%	0.7%	4.8%	5.2%	88.5%

Source: Voluntary System of Accountability (VSA), College Portrait web page

## University of North Carolina at Asheville

### Retention and Graduation Rates, Targets, and Performance of First-Time Full-Time Freshmen

	Actual Rates				
Retention	2006 Cohort	2007 Cohort	2008 Cohort	2009 Cohort	2010 Cohort
Initial Institution	76.3%	78.5%	81.9%	81.5%	79.8%
Any UNC Institution	80.0%	83.6%	86.0%	86.4%	84.7%
Public Peers Avg.	79.6%	79.1%	79.9%	79.5%	*

Goal	Difference
2010 Cohort	
82.0%	-2.2%

Goals	
2011 Cohort	2012 Cohort
83.0%	84.0%

	2003 Cohort	2004 Cohort	2005 Cohort	2006 Cohort	2007 Cohort
4-Year Graduation					
Initial Institution	28.7%	29.8%	32.7%	31.6%	36.9%
Any UNC Institution	30.7%	32.7%	37.4%	34.3%	40.2%
Public Peers Avg.	42.0%	44.7%	*	*	*

2007 Cohort	
35.0%	1.9%

2008 Cohort	2009 Cohort
36.0%	38.0%

	2001 Cohort	2002 Cohort	2003 Cohort	2004 Cohort	2005 Cohort
6-Year Graduation					
Initial Institution	53.6%	59.6%	58.7%	55.0%	60.5%
Any UNC Institution	61.9%	67.6%	68.5%	63.5%	72.0%
Public Peers Avg.	58.1%	59.7%	58.5%	60.1%	*

2005 Cohort	
58.0%	2.5%

2006 Cohort	2007 Cohort
60.0%	60.0%

Source: SDF.ER001, SCF.PPM001, & IPEDS \* Data not available from IPEDS

### Four-Year Graduation Rates, Targets, and Performance of NCCCS Associate Degree Recipients Who Transferred to UNC Institutions

	Actual Rates				
Four-Year Grad Rate of NCCCS Transfers with Associate Degree	2000-02 Cohort	2001-03 Cohort	2002-04 Cohort	2003-05 Cohort	2004-06 Cohort
	59.0%	63.0%	60.0%	65.0%	64.0%

Goal	Difference	Native Jr
2004-06 Cohort		
69.0%	-5.0%	91.0%

Goals	
2005-07 Cohort	2006-08 Cohort
70.0%	70.0%

Source: Persist.PR003A & SCF.PPM001

### Undergraduate 6-Year Success and Progress Rate, First-Time Full-Time Students Starting Fall 2004

Graduated from Home Inst.	Graduated from Other Institution		Still Enrolled in Home Inst.	Still Enrolled in Other Inst.	Total Rate
	With 4-Yr Degree	With 2-Yr Degree			
55.0%	15.0%	1.7%	4.0%	9.1%	84.8%

Source: Voluntary System of Accountability (VSA), College Portrait web page

## University of North Carolina at Chapel Hill

### Retention and Graduation Rates, Targets, and Performance of First-Time Full-Time Freshmen

	Actual Rates				
Retention	2006 Cohort	2007 Cohort	2008 Cohort	2009 Cohort	2010 Cohort
Initial Institution	96.5%	96.2%	95.7%	96.4%	96.9%
Any UNC Institution	97.6%	96.8%	96.3%	96.9%	97.4%
Public Peers Avg.	93.5%	93.7%	94.1%	94.2%	*

Goal	Difference
2010 Cohort	
96.5%	0.4%

Goals	
2011 Cohort	2012 Cohort
96.5%	96.5%

4-Year Graduation	2003 Cohort	2004 Cohort	2005 Cohort	2006 Cohort	2007 Cohort
Initial Institution	72.2%	74.8%	75.2%	75.7%	80.3%
Any UNC Institution	72.8%	75.4%	75.8%	76.5%	80.8%
Public Peers Avg.	60.9%	61.9%	*	*	*

2007 Cohort	
74.0%	6.3%

2008 Cohort	2009 Cohort
75.0%	75.0%

6-Year Graduation	2001 Cohort	2002 Cohort	2003 Cohort	2004 Cohort	2005 Cohort
Initial Institution	82.6%	86.1%	84.9%	88.0%	88.9%
Any UNC Institution	84.7%	87.6%	86.3%	89.3%	90.6%
Public Peers Avg.	81.0%	82.0%	83.2%	83.7%	*

2005 Cohort	
86.0%	2.9%

2006 Cohort	2007 Cohort
87.0%	87.0%

Source: SDF.ER001, SCF.PPM001, & IPEDS \* Data not available from IPEDS

### Four-Year Graduation Rates, Targets, and Performance of NCCCS Associate Degree Recipients Who Transferred to UNC Institutions

	Actual Rates				
Four-Year Grad Rate of NCCCS Transfers with Associate Degree	2000-02 Cohort	2001-03 Cohort	2002-04 Cohort	2003-05 Cohort	2004-06 Cohort
	71.0%	68.0%	68.0%	69.0%	73.0%

Source: Persist.PR003A & SCF.PPM001

Goal	Difference	Native Jr
2004-06 Cohort		
69.0%	4.0%	91.0%

Goals	
2005-07 Cohort	2006-08 Cohort
69.0%	69.0%

### Undergraduate 6-Year Success and Progress Rate, First-Time Full-Time Students Starting Fall 2004

Graduated from Home Inst.	Graduated from Other Institution		Still Enrolled in Home Inst.	Still Enrolled in Other Inst.	Total Rate
	With 4-Yr Degree	With 2-Yr Degree			
88.7%	2.7%	0.2%	1.8%	1.4%	94.8%

Source: Voluntary System of Accountability (VSA), College Portrait web page

## University of North Carolina at Charlotte

### Retention and Graduation Rates, Targets, and Performance of First-Time Full-Time Freshmen

	Actual Rates				
Retention	2006 Cohort	2007 Cohort	2008 Cohort	2009 Cohort	2010 Cohort
Initial Institution	77.0%	78.1%	77.9%	77.5%	78.0%
Any UNC Institution	80.5%	82.0%	81.8%	81.0%	81.6%
Public Peers Avg.	73.3%	73.8%	74.5%	75.5%	*

Goal	Difference
2010 Cohort	
80.0%	-2.0%

Goals	
2011 Cohort	2012 Cohort
81.0%	82.0%

	2003 Cohort	2004 Cohort	2005 Cohort	2006 Cohort	2007 Cohort
4-Year Graduation					
Initial Institution	25.5%	27.2%	25.9%	26.3%	25.5%
Any UNC Institution	27.3%	28.9%	27.8%	28.3%	27.3%
Public Peers Avg.	19.4%	19.9%	*	*	*

2007 Cohort	
26.8%	-1.3%

2008 Cohort	2009 Cohort
27.8%	28.8%

	2001 Cohort	2002 Cohort	2003 Cohort	2004 Cohort	2005 Cohort
6-Year Graduation					
Initial Institution	50.5%	50.6%	53.9%	55.1%	52.6%
Any UNC Institution	56.1%	56.3%	59.2%	59.9%	58.5%
Public Peers Avg.	43.7%	44.2%	44.6%	45.3%	*

2005 Cohort	
52.0%	0.6%

2006 Cohort	2007 Cohort
52.0%	53.0%

Source: SDF.ER001, SCF.PPM001, & IPEDS \* Data not available from IPEDS

### Four-Year Graduation Rates, Targets, and Performance of NCCCS Associate Degree Recipients Who Transferred to UNC Institutions

	Actual Rates				
Four-Year Grad Rate of NCCCS Transfers with Associate Degree	2000-02 Cohort	2001-03 Cohort	2002-04 Cohort	2003-05 Cohort	2004-06 Cohort
	64.0%	66.0%	68.0%	69.0%	71.0%

Goal	Difference	Native Jr
2004-06 Cohort		
63.5%	7.5%	87.0%

Goals	
2005-07 Cohort	2006-08 Cohort
64.0%	65.0%

Source: Persist.PR003A & SCF.PPM001

### Undergraduate 6-Year Success and Progress Rate, First-Time Full-Time Students Starting Fall 2003

Graduated from Home Inst.	Graduated from Other Institution		Still Enrolled in Home Inst.	Still Enrolled in Other Inst.	Total Rate
	With 4-Yr Degree	With 2-Yr Degree			
54.1%	9.3%	2.5%	6.0%	8.4%	80.3%

Source: Voluntary System of Accountability (VSA), College Portrait web page



## University of North Carolina at Greensboro

### Retention and Graduation Rates, Targets, and Performance of First-Time Full-Time Freshmen

	Actual Rates				
Retention	2006 Cohort	2007 Cohort	2008 Cohort	2009 Cohort	2010 Cohort
Initial Institution	75.9%	75.8%	76.6%	76.8%	75.7%
Any UNC Institution	79.3%	80.2%	80.6%	80.7%	79.1%
Public Peers Avg.	74.6%	74.8%	75.9%	77.3%	*

Goal	Difference
2010 Cohort	
78.3%	-2.6%

Goals	
2011 Cohort	2012 Cohort
79.1%	80.0%

4-Year Graduation	2003 Cohort	2004 Cohort	2005 Cohort	2006 Cohort	2007 Cohort
Initial Institution	28.3%	28.9%	27.9%	29.4%	29.5%
Any UNC Institution	30.4%	30.8%	29.7%	31.0%	31.9%
Public Peers Avg.	20.9%	21.8%	*	*	*

2007 Cohort	
31.7%	-2.2%

2008 Cohort	2009 Cohort
32.9%	34.0%

6-Year Graduation	2001 Cohort	2002 Cohort	2003 Cohort	2004 Cohort	2005 Cohort
Initial Institution	49.8%	52.5%	51.6%	52.8%	53.4%
Any UNC Institution	56.5%	59.5%	58.4%	59.6%	59.6%
Public Peers Avg.	46.6%	46.9%	47.3%	48.1%	*

2005 Cohort	
55.9%	-2.5%

2006 Cohort	2007 Cohort
58.1%	60.0%

Source: SDF.ER001, SCF.PPM001, & IPEDS \* Data not available from IPEDS

### Four-Year Graduation Rates, Targets, and Performance of NCCCS Associate Degree Recipients Who Transferred to UNC Institutions

	Actual Rates				
Four-Year Grad Rate of NCCCS Transfers with Associate Degree	2000-02 Cohort	2001-03 Cohort	2002-04 Cohort	2003-05 Cohort	2004-06 Cohort
	65.0%	65.0%	63.0%	64.0%	63.0%

Goal	Difference	Native Jr
2004-06 Cohort		
67.0%	-4.0%	90.0%

Goals	
2005-07 Cohort	2006-08 Cohort
67.0%	68.0%

Source: Persist.PR003A & SCF.PPM001

### Undergraduate 6-Year Success and Progress Rate, First-Time Full-Time Students Starting Fall 2003

Graduated from Home Inst.	Graduated from Other Institution		Still Enrolled in Home Inst.	Still Enrolled in Other Inst.	Total Rate
	With 4-Yr Degree	With 2-Yr Degree			
51.6%	10.4%	2.8%	6.9%	10.6%	82.3%

Source: Voluntary System of Accountability (VSA), College Portrait web page

## University of North Carolina at Pembroke

### Retention and Graduation Rates, Targets, and Performance of First-Time Full-Time Freshmen

	Actual Rates				
Retention	2006 Cohort	2007 Cohort	2008 Cohort	2009 Cohort	2010 Cohort
Initial Institution	71.5%	67.4%	67.7%	72.9%	62.4%
Any UNC Institution	75.3%	71.8%	72.4%	77.5%	67.1%
Public Peers Avg.	67.6%	67.6%	69.4%	68.8%	*

Goal	Difference
2010 Cohort	
73.0%	-10.6%

Goals	
2011 Cohort	2012 Cohort
74.0%	75.0%

	2003 Cohort	2004 Cohort	2005 Cohort	2006 Cohort	2007 Cohort
4-Year Graduation					
Initial Institution	16.4%	15.2%	14.8%	15.9%	15.4%
Any UNC Institution	18.3%	16.1%	16.1%	17.9%	17.3%
Public Peers Avg.	18.5%	17.4%	*	*	*

2007 Cohort	
21.0%	-5.6%

2008 Cohort	2009 Cohort
23.0%	25.0%

	2001 Cohort	2002 Cohort	2003 Cohort	2004 Cohort	2005 Cohort
6-Year Graduation					
Initial Institution	34.0%	33.4%	34.1%	37.5%	33.5%
Any UNC Institution	40.3%	39.7%	40.4%	41.8%	38.7%
Public Peers Avg.	39.3%	39.0%	38.9%	38.1%	*

2005 Cohort	
38.0%	-4.5%

2006 Cohort	2007 Cohort
40.0%	42.0%

Source: SDF.ER001, SCF.PPM001, & IPEDS \* Data not available from IPEDS

### Four-Year Graduation Rates, Targets, and Performance of NCCCS Associate Degree Recipients Who Transferred to UNC Institutions

	Actual Rates				
Four-Year Grad Rate of NCCCS Transfers with Associate Degree	2000-02 Cohort	2001-03 Cohort	2002-04 Cohort	2003-05 Cohort	2004-06 Cohort
	67.0%	64.0%	59.0%	59.0%	58.0%

Source: Persist.PR003A & SCF.PPM001

Goal	Difference	Native Jr
2004-06 Cohort		
73.0%	-15.0%	82.0%

Goals	
2005-07 Cohort	2006-08 Cohort
74.0%	75.0%

### Undergraduate 6-Year Success and Progress Rate, First-Time Full-Time Students Starting Fall 2004

Graduated from Home Inst.	Graduated from Other Institution		Still Enrolled in Home Inst.	Still Enrolled in Other Inst.	Total Rate
	With 4-Yr Degree	With 2-Yr Degree			
37.6%	6.0%	2.6%	6.3%	14.8%	67.3%

Source: Voluntary System of Accountability (VSA), College Portrait web page

## University of North Carolina at Wilmington

### Retention and Graduation Rates, Targets, and Performance of First-Time Full-Time Freshmen

	Actual Rates				
Retention	2006 Cohort	2007 Cohort	2008 Cohort	2009 Cohort	2010 Cohort
Initial Institution	84.5%	85.4%	84.7%	86.4%	85.6%
Any UNC Institution	87.8%	88.6%	88.5%	89.5%	89.0%
Public Peers Avg.	85.0%	84.7%	85.2%	85.2%	*

Goal	Difference
2010 Cohort	
88.0%	-2.4%

Goals	
2011 Cohort	2012 Cohort
89.0%	90.0%

	2003 Cohort	2004 Cohort	2005 Cohort	2006 Cohort	2007 Cohort
4-Year Graduation					
Initial Institution	44.3%	44.5%	43.5%	49.0%	51.7%
Any UNC Institution	46.9%	47.7%	45.9%	50.8%	54.3%
Public Peers Avg.	44.2%	44.4%	*	*	*

2007 Cohort	
46.0%	5.7%

2008 Cohort	2009 Cohort
48.0%	50.0%

	2001 Cohort	2002 Cohort	2003 Cohort	2004 Cohort	2005 Cohort
6-Year Graduation					
Initial Institution	64.8%	67.1%	68.5%	65.9%	66.9%
Any UNC Institution	71.6%	74.1%	76.6%	73.4%	73.9%
Public Peers Avg.	66.4%	67.3%	69.0%	69.3%	*

2005 Cohort	
69.0%	-2.1%

2006 Cohort	2007 Cohort
70.0%	71.0%

Source: SDF.ER001, SCF.PPM001, & IPEDS \* Data not available from IPEDS

### Four-Year Graduation Rates, Targets, and Performance of NCCCS Associate Degree Recipients Who Transferred to UNC Institutions

	Actual Rates				
Four-Year Grad Rate of NCCCS Transfers with Associate Degree	2000-02 Cohort	2001-03 Cohort	2002-04 Cohort	2003-05 Cohort	2004-06 Cohort
	79.0%	79.0%	81.0%	77.0%	78.0%

Source: Persist.PR003A & SCF.PPM001

Goal	Difference	Native Jr
2004-06 Cohort		
79.0%	-1.0%	93.0%

Goals	
2005-07 Cohort	2006-08 Cohort
80.0%	81.0%

### Undergraduate 6-Year Success and Progress Rate, First-Time Full-Time Students Starting Fall 2003

Graduated from Home Inst.	Graduated from Other Institution		Still Enrolled in Home Inst.	Still Enrolled in Other Inst.	Total Rate
	With 4-Yr Degree	With 2-Yr Degree			
69.0%	11.8%	1.4%	1.8%	5.8%	89.8%

Source: Voluntary System of Accountability (VSA), College Portrait web page

## University of North Carolina School of the Arts

### Retention and Graduation Rates, Targets, and Performance of First-Time Full-Time Freshmen

	Actual Rates				
Retention	2006 Cohort	2007 Cohort	2008 Cohort	2009 Cohort	2010 Cohort
Initial Institution	81.1%	77.5%	77.4%	79.6%	84.5%
Any UNC Institution	82.8%	78.7%	78.7%	82.2%	85.9%
Public Peers Avg.	87.0%	87.6%	88.8%	88.4%	*

Goal	Difference
2010 Cohort	
77.0%	7.5%

Goals	
2011 Cohort	2012 Cohort
77.0%	78.0%

	2003 Cohort	2004 Cohort	2005 Cohort	2006 Cohort	2007 Cohort
4-Year Graduation					
Initial Institution	58.7%	51.4%	53.8%	60.4%	57.4%
Any UNC Institution	59.5%	51.4%	56.3%	61.5%	58.0%
Public Peers Avg.	42.9%	43.8%	*	*	*

2007 Cohort	
55.0%	2.4%

2008 Cohort	2009 Cohort
58.0%	58.0%

	2001 Cohort	2002 Cohort	2003 Cohort	2004 Cohort	2005 Cohort
6-Year Graduation					
Initial Institution	51.4%	55.6%	61.2%	55.9%	58.2%
Any UNC Institution	54.1%	57.0%	63.6%	59.5%	62.7%
Public Peers Avg.	66.9%	67.4%	67.6%	67.3%	*

2005 Cohort	
55.0%	3.2%

2006 Cohort	2007 Cohort
58.0%	58.0%

Source: SDF.ER001, SCF.PPM001, & IPEDS \* Data not available from IPEDS

### Four-Year Graduation Rates, Targets, and Performance of NCCCS Associate Degree Recipients Who Transferred to UNC Institutions

	Actual Rates				
Four-Year Grad Rate of NCCCS Transfers with Associate Degree	2000-02 Cohort	2001-03 Cohort	2002-04 Cohort	2003-05 Cohort	2004-06 Cohort
	n/a	n/a	n/a	n/a	n/a

Goal	Difference	Native Jr
2004-06 Cohort		
n/a	n/a	n/a

Goals	
2005-07 Cohort	2006-08 Cohort
n/a	n/a

Source: Persist.PR003A & SCF.PPM001

Note: n/a stands for not applicable.

### Undergraduate 6-Year Success and Progress Rate, First-Time Full-Time Students Starting Fall 2003

Graduated from Home Inst.	Graduated from Other Institution		Still Enrolled in Home Inst.	Still Enrolled in Other Inst.	Total Rate
	With 4-Yr Degree	With 2-Yr Degree			
58.7%	0.8%	0.0%	1.7%	4.1%	65.3%

Source: Voluntary System of Accountability (VSA), College Portrait web page

## Western Carolina University

### Retention and Graduation Rates, Targets, and Performance of First-Time Full-Time Freshmen

	Actual Rates				
Retention	2006 Cohort	2007 Cohort	2008 Cohort	2009 Cohort	2010 Cohort
Initial Institution	66.5%	71.5%	76.2%	74.2%	72.0%
Any UNC Institution	73.1%	76.9%	81.1%	79.2%	75.5%
Public Peers Avg.	75.4%	75.5%	76.0%	75.3%	*

Goal	Difference
2010 Cohort	
73.0%	-1.0%

Goals	
2011 Cohort	2012 Cohort
74.0%	75.0%

	2003 Cohort	2004 Cohort	2005 Cohort	2006 Cohort	2007 Cohort
4-Year Graduation					
Initial Institution	26.4%	28.3%	29.1%	27.7%	32.0%
Any UNC Institution	27.4%	30.9%	31.0%	29.8%	34.1%
Public Peers Avg.	27.7%	27.6%	*	*	*

2007 Cohort	
28.0%	4.0%

2008 Cohort	2009 Cohort
30.0%	30.0%

	2001 Cohort	2002 Cohort	2003 Cohort	2004 Cohort	2005 Cohort
6-Year Graduation					
Initial Institution	47.4%	49.5%	48.8%	51.0%	50.2%
Any UNC Institution	55.4%	54.7%	54.6%	58.1%	55.5%
Public Peers Avg.	50.3%	51.5%	51.1%	52.6%	*

2005 Cohort	
51.5%	-1.3%

2006 Cohort	2007 Cohort
53.0%	55.0%

Source: SDF.ER001, SCF.PPM001, & IPEDS \* Data not available from IPEDS

### Four-Year Graduation Rates, Targets, and Performance of NCCCS Associate Degree Recipients Who Transferred to UNC Institutions

	Actual Rates				
Four-Year Grad Rate of NCCCS Transfers with Associate Degree	2000-02 Cohort	2001-03 Cohort	2002-04 Cohort	2003-05 Cohort	2004-06 Cohort
	75.0%	74.0%	73.0%	73.0%	74.0%

Source: Persist.PR003A & SCF.PPM001

Goal	Difference	Native Jr
2004-06 Cohort		
77.5%	-3.5%	87.0%

Goals	
2005-07 Cohort	2006-08 Cohort
78.0%	79.0%

### Undergraduate 6-Year Success and Progress Rate, First-Time Full-Time Students Starting Fall 2004

Graduated from Home Inst.	Graduated from Other Institution		Still Enrolled in Home Inst.	Still Enrolled in Other Inst.	Total Rate
	With 4-Yr Degree	With 2-Yr Degree			
52.0%	8.9%	2.4%	3.1%	11.3%	77.7%

Source: Voluntary System of Accountability (VSA), College Portrait web page

## Winston-Salem State University

### Retention and Graduation Rates, Targets, and Performance of First-Time Full-Time Freshmen

	Actual Rates				
Retention	2006 Cohort	2007 Cohort	2008 Cohort	2009 Cohort	2010 Cohort
Initial Institution	68.0%	73.4%	77.8%	77.0%	80.4%
Any UNC Institution	71.2%	76.7%	81.2%	80.6%	82.3%
Public Peers Avg.	70.3%	69.9%	70.7%	69.8%	*

Goal	Difference
2010 Cohort	
75.0%	5.4%

Goals	
2011 Cohort	2012 Cohort
78.0%	80.0%

	2003 Cohort	2004 Cohort	2005 Cohort	2006 Cohort	2007 Cohort
4-Year Graduation					
Initial Institution	14.0%	13.1%	15.9%	14.8%	17.8%
Any UNC Institution	14.6%	13.6%	17.0%	15.9%	18.3%
Public Peers Avg.	17.1%	17.2%	*	*	*

2007 Cohort	
21.0%	-3.2%

2008 Cohort	2009 Cohort
23.0%	25.0%

	2001 Cohort	2002 Cohort	2003 Cohort	2004 Cohort	2005 Cohort
6-Year Graduation					
Initial Institution	45.1%	39.3%	36.5%	35.6%	41.0%
Any UNC Institution	48.5%	41.8%	39.0%	40.0%	45.1%
Public Peers Avg.	40.4%	39.1%	38.5%	38.9%	*

2005 Cohort	
48.0%	-7.0%

2006 Cohort	2007 Cohort
50.0%	52.0%

Source: SDF.ER001, SCF.PPM001, & IPEDS

\* Data not available from IPEDS

### Four-Year Graduation Rates, Targets, and Performance of NCCCS Associate Degree Recipients Who Transferred to UNC Institutions

	Actual Rates				
Four-Year Grad Rate of NCCCS Transfers with Associate Degree	2000-02 Cohort	2001-03 Cohort	2002-04 Cohort	2003-05 Cohort	2004-06 Cohort
	48.0%	56.0%	57.0%	59.0%	56.0%

Source: Persist.PR003A & SCF.PPM001

Goal	Difference	Native Jr
2004-06 Cohort		
67.0%	-11.0%	69.0%

Goals	
2005-07 Cohort	2006-08 Cohort
68.0%	68.0%

### Undergraduate 6-Year Success and Progress Rate, First-Time Full-Time Students Starting Fall 2003

Graduated from Home Inst.	Graduated from Other Institution		Still Enrolled in Home Inst.	Still Enrolled in Other Inst.	Total Rate
	With 4-Yr Degree	With 2-Yr Degree			
37.8%	3.5%	0.7%	11.7%	11.8%	65.5%

Source: Voluntary System of Accountability (VSA), College Portrait web page