

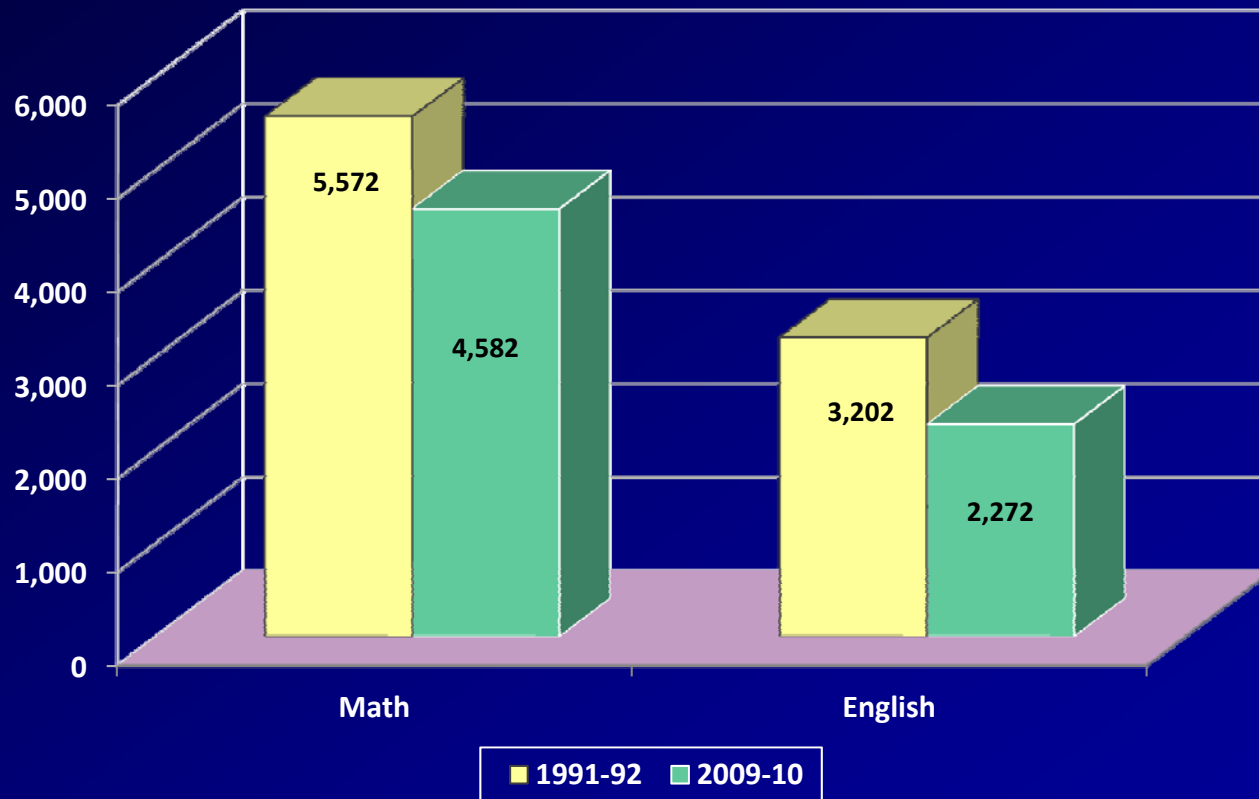
Definition of Remediation at UNC

The definition of remediation at UNC consists of two parts:

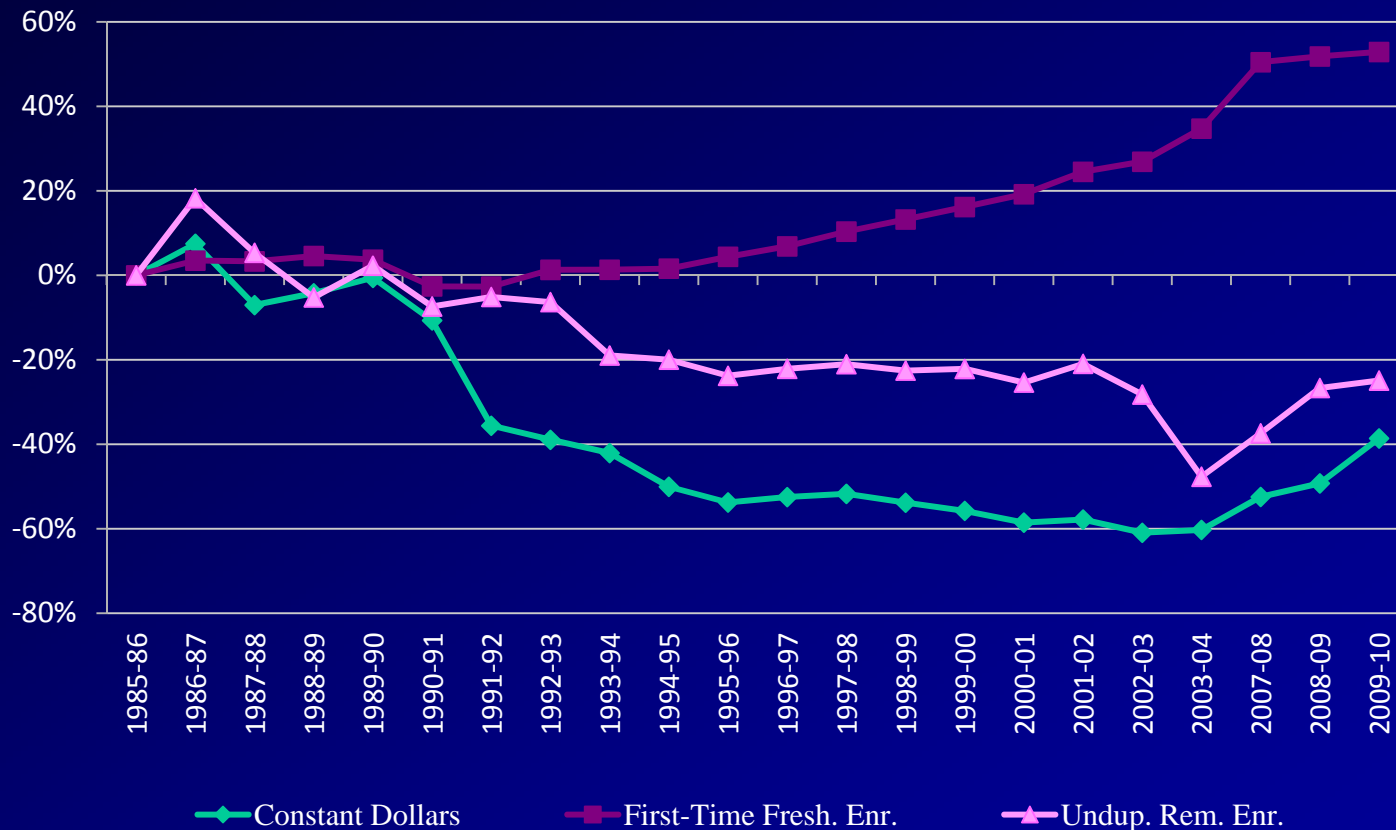
- 1) Remedial courses shall be defined as courses in reading, writing, or mathematics for college-level students lacking those skills necessary to perform college-level work at the level required by the institution. Students participating in remedial education while in college may not earn credit toward their degrees by completion of these courses.
- 2) In addition to “remedial courses” there are related services such as academic skill labs, tutorials, learning assistance centers, special services programs, and summer bridge/transition programs. Only those services that are provided exclusively for the purposes of supporting students needing remediation shall be included in cost summaries. Support services provided to any student are excluded.



Remedial/Developmental Course Enrollments, 1991-92 and 2009-10



Percentage of Change in Unduplicated Remedial Education Enrollments and Inflation-Adjusted Expenditures Compared with Fall First-Time Freshmen Enrollments, 1985-86 to 2009-10



Notes: 1. Definition of remedial expenditures was modified in 1991-92.
 2. There is no report for 2004-05 through 2006-07.

The University of North Carolina General Administration

A FOCUS ON STUDENT SUCCESS

Next Steps

- **The new DPI initiative of giving the ACT + Writing Test to all 11th graders will provide important data for longitudinal research as those students matriculate into UNC**
- **UNC will continue to assess the performance of NCCCS transfers into UNC to see how it informs “readiness”**
- **UNC and NCCCS will renew efforts to develop online models for enhancing the preparation of developmental education instructors**
- **UNC will explore additional opportunities to collaborate with NCCCS to provide developmental course work for UNC students who may need it**
- **UNC will continue to explore the most effective placement procedures for students coming to UNC straight from HS or through the NCCCS**

