

# *University of North Carolina Tuition and Fees*

---

*BOG Policy Discussion*



The University of North Carolina

January 7, 2010

---

## *Overview*



The University of North Carolina

## ***Tuition 2010-11***

- The 2009 General Assembly set tuition for UNC campuses for 2010-11 by increasing all existing rates by the lesser of \$200 or 8%.
  - Average increase for in-state undergraduates – General Assembly's 2010-11 Plan is 7.2% (\$180)
  - Revenues deposited into State's General Fund
- President Bowles will recommend that the BOG ask the General Assembly to consider an ALTERNATIVE proposal consistent with the Board's Four-Year Plan.
  - Average increase for in-state undergraduates – last three years under BOG Plan was 3.1% (\$72)
  - Average increase for in-state undergraduates – as requested by UNC campuses for 2010-11 is 5.2% (\$131)
  - Revenues available to campuses for need-based aid (50%), improvements to retention and graduation (25%), and other critical needs (25%)



The University of North Carolina

3

## ***Tuition Revenues 2010-11***

### ■ Comparison of Revenue from Legislative Plan and BOG Plan

	<u>Legislature</u> (in millions)	<u>BOG</u> (in millions)
Resident UG	\$25.1	\$18.2
Resident Grad	4.9	4.4
Subtotal Resident	30.0	22.6
Nonresident UG	3.5	9.2
Nonresident Grad	1.3	2.6
Subtotal Nonresident	4.8	11.8
Grand Total Revenues	\$34.8*	\$34.4

\* Fiscal Research Division estimate



The University of North Carolina

4

## ***Tuition Revenues 2010-11***

Institution	TUITION REVENUES	
	Legislative Tuition Increase – 8% or \$200	Campus Tuition Increase
NCSU	\$5,331,200	\$4,496,050
UNC-CH	5,236,200	8,206,201
ECU	4,474,010	4,359,665
NCA&T	1,839,954	1,094,400
UNCC	3,943,600	3,282,545
UNCG	3,210,000	2,858,862
ASU	2,725,533	3,137,332
FSU	845,031	733,895
NCCU	1,224,445	1,232,331
UNC-P	782,961	754,388
UNCW	2,231,800	939,966
WCU	1,150,464	942,565
WSSU	827,330	633,420
UNCA	605,544	755,761
ECSU	426,210	635,752
UNCSA	165,200	379,314



The University of North Carolina

## ***Tuition & Fee Setting Process***

Summer 2009	Legislature approves tuition increase of the lesser of 8% or \$200 for 2010-11
Summer 2009	Based on conversations with legislative leadership, President Bowles recommended to BOG that they consider ALTERNATIVE to Legislative Plan
Fall 2009	GA asks Chancellors, Chief Academic Officers and Chief Finance Officers to follow traditional Tuition & Fee process.
October 21, 2009	Tuition and Fee instructions, consistent with the Board's 4-year tuition plan, mailed to campuses.
Aug. – Nov. 2009	Campuses hold Tuition & Fee Committee meetings to discuss potential rate increases. Committees are comprised of faculty, staff, and students. Student forums are held to discuss proposed rate changes with student body.
Nov. – Dec. 2009	Boards of Trustees review and approve campus proposals and submit 2010-11 Tuition and Fee requests to GA.
Dec. 2009 – Feb. 2010	General Administration reviews the 2010-11 tuition and fee requests. Recommendations will be made to the Board of Governors during the February 2010 meeting.
January 7, 2010	2010-11 Tuition & Fees BOG Policy Discussion
January 25, 2010	Tuition & Fees summary information mailed to the Board. The President makes recommendations on rate increases.
February 11-12, 2010	Board of Governors reviews and considers tuition and fee rate increases for the 2010-11 academic year.



The University of North Carolina

## *Context for Setting Tuition*

---

- “The Board of Governors shall set tuition, not inconsistent with actions of the General Assembly.” –G.S. 116-11

### Previous Interpretations:

- Presidents Friday (1972-1986; 3.4% avg. tuition increase) and Spangler (1986-1997; 7.7% avg. tuition increase)
  - ❖ The Board never recommended tuition increases and always deferred to the General Assembly.
  - ❖ Tuition rates became a State budget balancing factor.
  - ❖ Increases in tuition ranged from 0 to 20% and tuition revenues were always used for purposes designated by the General Assembly.
- President Broad (1997-2005; 9.1% average tuition increase)
  - ❖ The Board adopted a tuition policy to ensure quality, affordability, and predictability.
  - ❖ Campuses were allowed to propose tuition increases to meet justified needs.
  - ❖ The General Assembly passed legislation affirming that campuses could retain the tuition receipts generated by campus-based tuition increases.
  - ❖ But increases in tuition ranged from 0 to 24%.



The University of North Carolina

7

## *Context for Setting Tuition*

---

- Since 2006:
  - Tuition setting has been consistent with the Board of Governors’ four-year tuition plan.
  - Campuses continue to have the benefit of retaining tuition receipts to improve academic quality.
  - Students have predictability and affordability.
  - Campuses also have predictability.
  - Under the first three years of the plan, tuition increased by 5.1%, 1.2% and 2.8%, respectively.



The University of North Carolina

8

## ***Tuition and Fees – BOG Four-Year Plan***

---

- Tuition increases cannot exceed 6.5%.
- If recurring state operating appropriations per capita are greater than 6%, the tuition ceiling for the next year is reduced by 1% for each percentage above 6%.
- President Bowles has instructed the Chancellors that the 6.5% ceiling also applies to fees. Debt service fees are not included.
- Consistent with the four-year tuition plan, all campuses would be allowed to increase tuition by up to 6.5% for 2010-11.



## ***Tuition & Fees – BOG Four-Year Plan***

---

- From 2006 through 2008, campuses were required to set aside new revenues for:
  - Financial Aid (25%)
  - Faculty Salaries (25%) – Required until a campus reaches the Board's 80<sup>th</sup> percentile goal.
  - Critical Needs – Academic Quality (50%)



## ***Tuition & Fees – BOG Four-Year Plan***

---

- **For 2009-10 (current year), campuses were required to set aside new revenues for:**

- **Financial Aid (50%)**
- **Critical Needs – Academic Quality (50%)**



## ***Tuition & Fees – 2010 -11***

---

- **As an alternative to the legislative plan for 2010-11, the President will recommend revenues be used by the campuses for:**

- **Need-Based Financial Aid (50%)**
- **Improve Retention and Graduation Rates (25%)**
- **Critical Needs – Academic Quality (25%)**



## *Tuition & Fees – BOG Four-Year Plan*

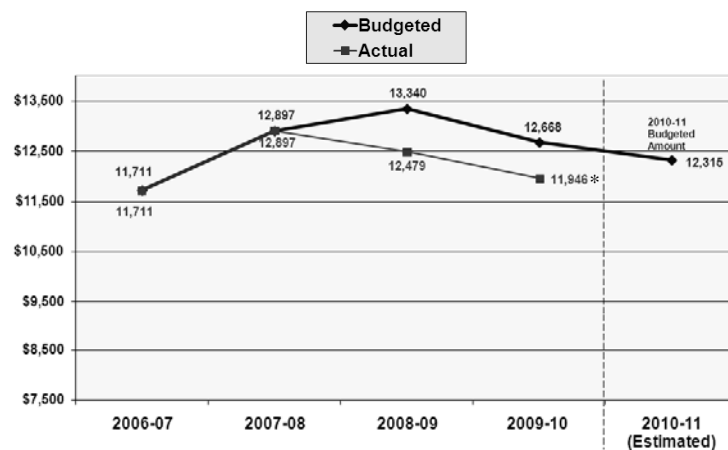
- The plan has led UNC on the right trajectory to provide quality, affordability, and predictability for all students.



The University of North Carolina

13

## *Appropriations Per Capita 2006-07 through 2010-11*



\* Amount includes 5% holdback.



The University of North Carolina

14

## ***UNC Campus Budget Reductions***

---

### **2009-10**

- **\$296.6 million in total cuts – nonrecurring and recurring**
- **\$162.5 million in permanent cuts to operating budgets**
  - **96.5% of permanent cuts are administrative**
- **5% holdback (\$134.1 million)**



## ***UNC Campus Budget Reductions***

---

### **2010-11**

- **Additional cuts (\$30.1M)**
- **General Assembly's tuition increase is budgeted as an offset to campuses' state appropriations (\$34.8M)**
- **EARN Scholarship Program will be completely eliminated (\$20M)**
- **\$12 million of 2009-10 UNC Need-Based Grant is from nonrecurring funds and must be re-appropriated**





## ***UNC Campus Budget Reductions***

---

### **2010-11 – Potential Impact**

- Eliminate additional administrative positions
- Eliminate faculty jobs
- Increase class size and reduce sections
- Reduce lab & library hours
- Eliminate student programs
- Reduce tutoring & advising services



The University of North Carolina

17

## ***State's Economic Outlook 2009-10***

---

- Currently under a 5% holdback mandated by the Governor
- Legislative staff reports through first five months of fiscal year, revenues down 1.5% (\$110 million)
- Employment yet to show improvement impacting income tax and sales tax
- Sales tax collections are 1.8% below expectations
- Wage and salary income taxes are down 3.8%
- In order to meet the state budget's 2009-10 budget forecast, a reversal of employment losses will need to materialize in early 2010

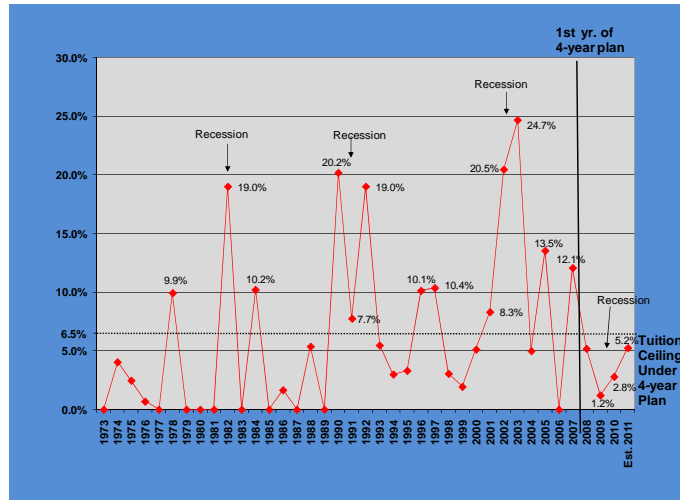


Source: Fiscal Research Division/NC General Assembly

The University of North Carolina

18

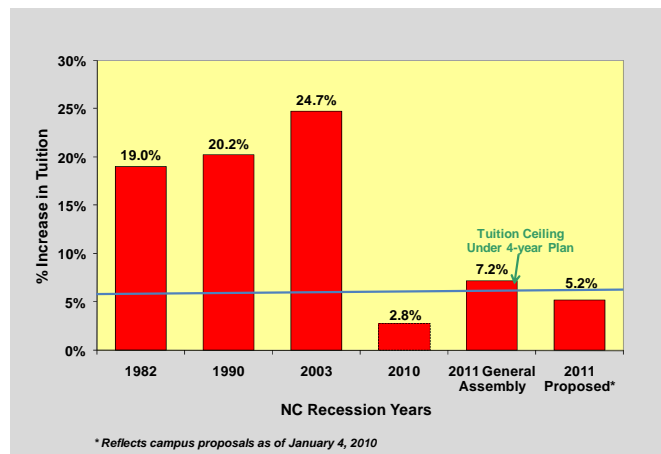
## Historical % Increases in UNC Average UG Resident Tuition



The University of North Carolina

19

## Historical Correlation Between Recessions and UNC Tuition Increases



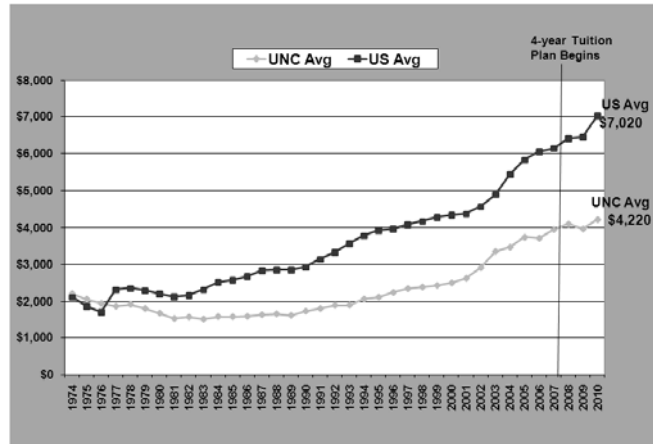
We are in a severe recession. The President does not want tuition increases to occur at the historic recession rates.



The University of North Carolina

20

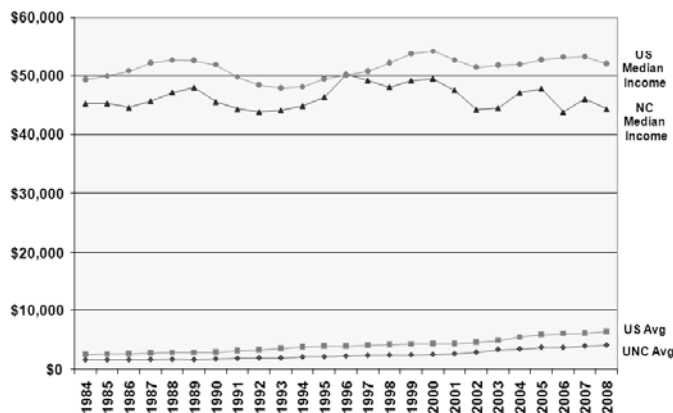
## Historical UG Resident Tuition & Fees 1974 to 2010 (in constant dollars)



U.S. Average is for public 4-year institutions from the report, "Trends in College Pricing," published by the College Board. "Trends in College Pricing" uses the CPI-U to adjust for inflation.

The University of North Carolina

## Historical UG Resident Tuition & Fees & Median Household Income 1984 to 2008 (in constant dollars)



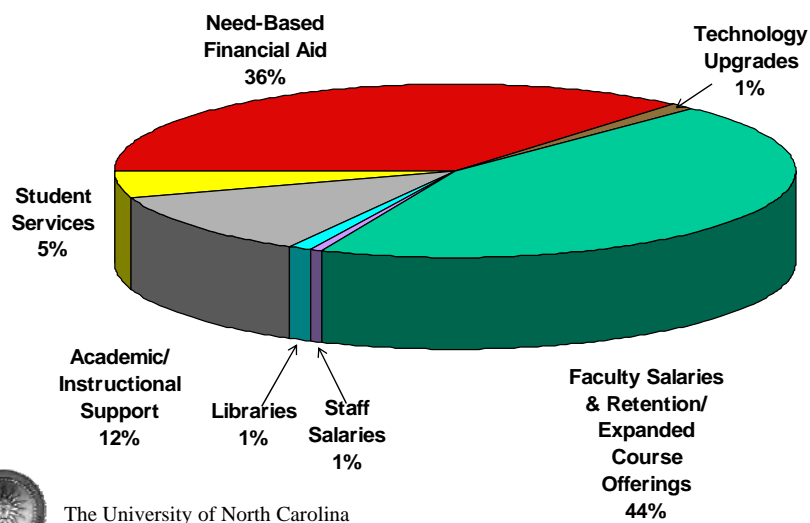
U.S. Average is for public 4-year institutions from the report, "Trends in College Pricing," published by the College Board. "Trends in College Pricing" uses the CPI-U to adjust for inflation. Median household income for NC and US is from US Census Bureau and has been adjusted for inflation by the same factor used in "Trends in College Pricing."



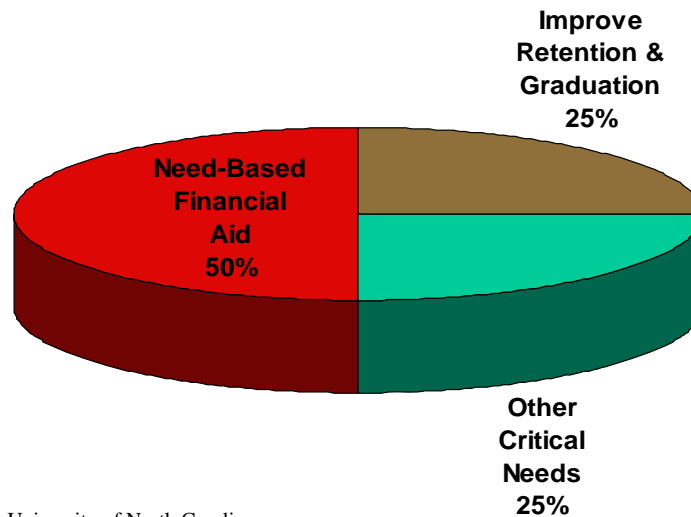
The University of North Carolina

# ***TUITION***

## ***Historical % Use of Campus-Initiated Tuition Revenues—2000-01 through 2009-10***



## *% Use of Campus-Initiated Tuition Revenues for 2010-11*



The University of North Carolina

25

## *UNC Resident Tuition and Fees 2008-09 Peer Comparisons*

*The rank of 1 is the lowest tuition and fees*

Institution	Number of peers	Rank Res - UG	Rank Res - Grad
ASU	19	4	4
ECU	16	2	2
ECSU	15	1	1
FSU	15	1	1
NCA&T	15	2	1
NCCU	17	3	3
NCSU	16	2	1
UNCA	12	2	2
UNC-CH	11	2	1
UNCC	17	3	3
UNCG	17	2	1
UNCP	19	1	1
UNCW	15	3	1
UNCSA	14	1	1
WCU	16	2	1
WSSU	17	1	4

**Campuses are meeting the Board's requirement to remain in the lowest quarter of peer institutions.**

**Resident Undergraduate  
15 institutions rank 1<sup>st</sup>, 2<sup>nd</sup>, or 3<sup>rd</sup> lowest tuition & fees**

**Resident Graduate  
14 institutions rank 1<sup>st</sup>, 2<sup>nd</sup>, or 3<sup>rd</sup> lowest tuition & fees**

*Source: IPEDS*



The University of North Carolina

26

## ***UNC Nonresident Tuition and Fees 2008-09 Peer Comparisons***

*The rank of 1 is the lowest tuition and fees*

Institution	Number of peers	Rank Nonres - UG	Rank Nonres - Grad
ASU	19	9	7
ECU	16	4	6
ECSU	15	7	10
FSU	15	8	8
NCA&T	15	5	6
NCCU	17	6	8
NCSU	16	3	3
UNCA	12	5	8
UNC-CH	11	3	2
UNCC	17	4	4
UNCG	17	4	4
UNCP	19	8	12
UNCW	15	6	4
UNCSA	14	2	4
WCU	16	6	10
WSSU	17	5	9

**For nonresident tuition and fees, UNC's rates are below those of the upper quarter of our peers.**

### **Nonresident Undergraduate**

**15 institutions rank in lower half for tuition and fees**

### **Nonresident Graduate**

**10 institutions rank in lower half for tuition and fees**

*Source: IPEDS*

The University of North Carolina

27

## ***Tuition and Fee Comparisons for UNC Peer Institutions – 2008-09***

Institution	UNC Campus Variance to 2nd Quarter Undergraduate Resident Tuition & Fees
ASU	\$1,202
ECU	1,408
ECSU	2,255
FSU	1,569
NCA&T	1,727
NCCU	429
NCSU	1,086
UNCA	1,484
UNC-CH	2,154
UNCC	1,761
UNCG	1,937
UNCP	1,647
UNCW	1,007
WCU	1,552
WSSU	1,029

**The four-year plan requires that combined tuition and fee rates for resident undergraduates remain within the bottom quarter of each institution's public peers, as approved by the Board of Governors.**

*Source: IPEDS*

The University of North Carolina

28

## *Campus Proposals for Resident Undergraduate Tuition for 2010-11*

Institution	2009-10 Resident Tuition	2010-11 Tuition Ceiling	2010-11 Proposed Tuition Increase		2010-11 Proposed Tuition
			%	\$	
NCSU	\$3,953	6.5%	3.8%	\$150	\$4,103
UNC-CH	3,865	6.5%	5.2%	200	4,065
ECU	2,491	6.5%	3.6%	90	2,581
NCA&T	1,994	6.5%	5.5%	110	2,104
UNCC	2,516	6.5%	4.1%	103	2,619
UNCG	2,590	6.5%	6.5%	168	2,758
ASU	2,341	6.5%	6.5%	152	2,493
FSU	1,905	6.5%	6.5%	124	2,029
NCCU	2,264	6.5%	5.0%	113	2,377
UNCP	2,060	6.5%	5.5%	113	2,173
UNCW	2,565	6.5%	2.0%	52	2,617
WCU	2,106	6.5%	6.5%	137	2,243
WSSU	1,769	6.5%	6.5%	115	1,884
UNCA	2,389	6.5%	6.5%	155	2,544
ECSU	1,681	6.5%	6.5%	109	1,790
UNCSA	3,357	6.5%	6.0%	200	3,557
Average Increase			5.2%	\$131	



The University of North Carolina

29

## *Other Proposed Average Tuition Increases for 2010-11*

<b>Undergraduate Nonresident</b>	<b>3.5%</b>	<b>\$474</b>
<b>Graduate Resident</b>	<b>5.0%</b>	<b>\$148</b>
<b>Graduate Nonresident</b>	<b>3.2%</b>	<b>\$437</b>



The University of North Carolina

30

---

# *Financial Aid*



The University of North Carolina

31

## *Need-Based Financial Aid Changes for UNC Students*

---

### **UNC Need-Based Financial Aid Program**

- **Maximum has increased from \$3,700 to \$3,800 per student**
- **\$12 million of current budget is from nonrecurring funds and must be re-appropriated**
- **BOG's \$22.5 million request for additional for 2010-11 has not been funded**



The University of North Carolina

32



## ***Need-Based Financial Aid Changes for UNC Students***

---

### **Other Financial Aid**

- **Maximum Pell Grant has increased from \$4,731 to \$5,350 per student**
- **Campus-based aid increased by \$12.5M from 2009-10 tuition receipts**
- **EARN Scholarships (\$4,000 per student) eliminated for 2010-11 by 2009 General Assembly**



## ***Observations about Need-Based Financial Aid***

---

- **Most campuses have experienced an increase in the number of students who qualify for need-based aid and also in the amount of aid that those students qualify to receive.**
- **Pell, Lottery, and UNC Need-Based Grant funds have helped some, but the phasing out of the EARN Scholars program has had a negative effect on needy students and on the campuses' ability to meet students' needs.**
- **Campuses have worked to mitigate that impact through campus-based aid, additional offers of work study and need-based loans. This has caused increasing strain on campus-based resources and aid offices have had much more difficulty meeting students' needs.**
- **The complete elimination of EARN Scholars program in 2010-11 will cause even further strain on aid resources.**



## *Preliminary Change 2008-09 to 2009-10*

---

	<u>2008-09</u>	<u>2009-10</u>
<b>Proportion of UNC Students completing a FAFSA</b>	<b>66%</b>	<b>71%</b>
<b>Proportion of UNC Students with Demonstrated Need</b>	<b>50%</b>	<b>53%</b>



The University of North Carolina

35

## *Affordability – Grant Awards at Various Family Income Levels*

---

- Financial Aid Directors have prepared data on the cost of attendance, grants, and other financial aid for families at four income levels for 2009-10. A campus example follows.
- This chart is an example and is not intended to be an exact match to a particular family. The following assumptions were used:
  - Cost of attendance includes tuition & fees and room & board. In addition, a UNC system-wide median for books & supplies, transportation, and personal expenses was used. All amounts are for a dependent undergraduate resident student.
  - Student has no earnings or assets
  - Federal calculation used for Expected Family Contribution (EFC)
  - Family of four with little or no assets



The University of North Carolina

36

## ***Estimate of Need-Based Financial Aid Package for a Typical NC Resident Freshman – NCCU***

Parental Adjusted Gross Income	2009-10			
	\$37,000	\$51,000	\$75,000	\$90,000
<b>Cost at NCCU</b>	<b>14,969</b>	<b>14,969</b>	<b>14,969</b>	<b>14,969</b>
– Expected Family Contribution (Federal Formula)	713	2,985	8,827	13,928
<b>=Financial Need (Federal Formula)</b>	<b>14,256</b>	<b>11,984</b>	<b>6,142</b>	<b>1,041</b>
Pell Grant	4,600	2,400	0	0
Academic Competitiveness Grant	750	750	0	0
UNC Need-based Grant	2,484	3,478	2,528	696
Lottery Grant	0	1,000	0	0
EARN Scholars Grant	2,000	0	0	0
Institution-Based Grant(s)	2,000	2,000	0	0
Cost Covered By Grants	11,834	9,628	2,528	696
Remaining Need After Grants	2,422	2,356	3,614	345
+ Expected Family Contribution (EFC)	713	2,985	8,827	13,928
= Amount Remaining	3,135	5,341	12,441	14,273
<i>Need-Based Sources to Cover Remaining Amount</i>				
Campus job (Federal Work Study/Other Need-Based)	1,000	1,000	1,000	0
Student Loans (Subsidized)	1,422	1,356	2,614	345



The University of North Carolina

37

## ***Financial Aid***

- The “Four Families Chart” for every campus will be provided, along with other data about tuition and fees, to BOG members three weeks before the February 2010 meeting.



The University of North Carolina

38

# ***FEES***

## ***Required General Fees***

---

- **Athletics**
- **Health Services**
- **Student Activities**
- **Educational and Technology**

*Debt Service fees are not subject to the 6.5% cap and are addressed by the Board when it approves capital projects paid for from non-appropriated sources. Special fees, allowed under previous Presidents, have not been allowed to increase in three years.*



## *Resident Undergraduate Proposed General Fee Increases for 2010-11*

Institution	2009-10 General Fees	2010-11 Proposed Gen. Fee Increase		2010-11 Proposed Gen. Fees
		%	\$	
NCSU	\$1,206.00	1.2%	\$ 14.30	\$1,220.30
UNC-CH	1,404.66	4.7%	65.98	1,470.64
ECU	1,481.00	4.7%	70.00	1,551.00
NCA&T	1,444.75	6.5%	93.25	1,538.00
UNCC	1,475.00	4.1%	60.00	1,535.00
UNCG	1,324.00	6.5%	86.00	1,410.00
ASU	1,681.00	1.8%	30.00	1,711.00
FSU	1,152.00	6.5%	75.00	1,227.00
NCCU	1,477.21	4.8%	70.21	1,547.42
UNCP	1,425.00	2.9%	41.00	1,466.00
UNCW	1,599.80	0.4%	5.60	1,605.40
WCU	1,661.00	6.4%	106.50	1,767.50
WSSU	1,512.16	2.7%	41.00	1,553.16
UNCA	1,719.85	6.5%	111.65	1,831.50
ECSU	1,350.00	6.3%	85.10	1,435.10
UNCSA	1,670.00	6.4%	107.00	1,777.00
Average Increase		4.5%	\$66.41	

General Fees include Athletics, Health Services, Student Activities, and Educational & Technology



The University of North Carolina

41

## *Factors that Influence Fees*

- Appropriations are not available for fee-supported activities
- External cost factors
- Level of service
- Other sources of revenue
- Economies of scale
- Financial condition of the enterprise



The University of North Carolina

42

## ***2010-11 Justification for Fee Increases***

---

- **State recurring appropriations are not available for fee-supported activities**
  - **Utilities and travel**
  - **Deferred maintenance of facilities**
  - **Technology**
  - **Medical supplies**
  - **Title IX compliance**
  - **Expand student activities**



## ***Athletics Fees***

---

- **Revenues from Athletics Fees provide funds for intercollegiate athletic programs and for the maintenance and operations of athletic facilities. One of the key budget items in the athletics budgets is salaries. As salaries are increased, fees must be increased to provide the needed resources.**



## *2010-11 Proposed Athletics Fees*

Institution	2009-10 Athletics Fee	2010-11 Campus Request		
		\$	%	Total
NCSU	\$150.50	\$ 8.50	5.6%	\$159.00
UNC-CH	265.00	6.00	2.3%	271.00
ECU	496.00	30.00	6.0%	526.00
NCA&T	502.00	30.00	6.0%	532.00
UNCC	477.00	12.00	2.5%	489.00
UNCG	461.00	28.00	6.1%	489.00
ASU	559.00	10.00	1.8%	569.00
FSU	410.00	40.00	9.8%	450.00
NCCU	548.24	35.64	6.5%	583.88
UNCP	577.00	18.00	3.1%	595.00
UNCW	420.65	13.10	3.1%	433.75
WCU	567.00	66.50	11.7%	633.50
WSSU	579.00	0.00	0.0%	579.00
UNCA	605.00	15.00	2.5%	620.00
ECSU	463.00	30.10	6.5%	493.10
UNCSA	N/A	N/A	N/A	N/A



The University of North Carolina

45

## *Health Services Fees*

- **Health Services fees cover health and medical services for students, including the maintenance and operation of student health centers and all salaries associated with health center operations.**
- **Mandatory student health insurance is not included in this fee.**



The University of North Carolina

46

## *2010-11 Proposed Health Services Fees*

Institution	2009-10 Health Services Fee	2010-11 Campus Request		
		\$	%	Total
NCSU	\$245.62	\$ 0.00	0.0%	\$245.62
UNC-CH	406.00	15.00	3.7%	421.00
ECU	230.00	0.00	0.0%	230.00
NCA&T	212.00	15.00	7.1%	227.00
UNCC	166.00	4.00	2.4%	170.00
UNCG	226.00	26.00	11.5%	252.00
ASU	236.00	20.00	8.5%	256.00
FSU	115.00	0.00	0.0%	115.00
NCCU	198.00	5.94	3.0%	203.94
UNCP	128.00	0.00	0.0%	128.00
UNCW	176.00	5.00	2.8%	181.00
WCU	245.00	0.00	0.0%	245.00
WSSU	187.00	0.00	0.0%	187.00
UNCA	211.00	33.00	15.6%	244.00
ECSU	200.00	13.00	6.5%	213.00
UNCSA	673.00	57.00	8.5%	730.00



The University of North Carolina

47

## *Student Activities Fees*

- **Student Activities fees provide funds for nonacademic student services and for the maintenance and operation of facilities used in conjunction with those services (student unions and intramural facilities, student organizations, newspapers, yearbooks, and entertainment programs).**



The University of North Carolina

48



## *2010-11 Proposed Student Activities Fees*

Institution	2009-10 Student Activities Fee	2010-11 Campus Request		
		\$	%	Total
NCSU	\$423.88	(\$2.70)	(0.6%)	\$421.18
UNC-CH	324.66	18.72	5.8%	343.38
ECU	593.00	0.00	0.0%	593.00
NCA&T	413.00	30.00	7.3%	443.00
UNCC	524.00	10.00	1.9%	534.00
UNCG	345.00	23.00	6.7%	368.00
ASU	523.00	0.00	0.0%	523.00
FSU	386.00	25.00	6.5%	411.00
NCCU	396.05	11.88	3.0%	407.93
UNCP	513.00	14.00	2.7%	527.00
UNCW	605.65	(12.50)	(2.1%)	593.15
WCU	506.00	20.00	4.0%	526.00
WSSU	404.70	16.00	4.0%	420.70
UNCA	655.50	27.65	4.2%	683.15
ECSU	502.00	30.00	6.0%	532.00
UNCSA	642.00	5.00	0.8%	647.00



The University of North Carolina

49

## *Educational and Technology Fees*

- Educational and Technology fee revenues provide for specialized instructional supplies and services and for scientific and information technology equipment not provided by State funds.



The University of North Carolina

50

## ***2010-11 Proposed Educational and Technology Fees***

Institution	2009-10 Ed & Tech Fee	2010-11 Campus Request		
		\$	%	Total
NCSU	\$386.00	\$ 8.50	2.2%	\$394.50
UNC-CH	409.00	26.26	6.4%	435.26
ECU	162.00	40.00	24.7%	202.00
NCA&T	317.75	18.25	5.7%	336.00
UNCC	308.00	34.00	11.0%	342.00
UNCG	292.00	9.00	3.1%	301.00
ASU	363.00	0.00	0.0%	363.00
FSU	241.00	10.00	4.1%	251.00
NCCU	334.92	16.75	5.0%	351.67
UNCP	207.00	9.00	4.3%	216.00
UNCW	397.50	0.00	0.0%	397.50
WCU	343.00	20.00	5.8%	363.00
WSSU	341.46	25.00	7.3%	366.46
UNCA	248.35	36.00	14.5%	284.35
ECSU	185.00	12.00	6.5%	197.00
UNCSA	355.00	45.00	12.7%	400.00



The University of North Carolina

51

## ***Debt Service Fees***

- **Indebtedness fees cover the cost of principal and interest for self-liquidating capital projects approved by the Board of Governors and the General Assembly.**



The University of North Carolina

52

## ***2010-11 Debt Service Fees***

Institution	2009-10 Debt Serv. Fee	2010-11 Campus Request		
		\$	%	Total
NCSU	\$237.00	83.00	35.0%	\$320.00
UNC-CH	180.50	27.35	15.2%	207.85
ECU	318.00	0.00	0.0%	318.00
NCA&T	161.00	0.00	0.0%	161.00
UNCC	365.00	120.00	32.9%	485.00
UNCG	272.00	0.00	0.0%	272.00
ASU	402.00	100.00	24.9%	502.00
FSU	95.00	0.00	0.0%	95.00
NCCU	120.00	0.00	0.0%	120.00
UNCP	170.00	0.00	0.0%	170.00
UNCW	708.00	(20.00)	(2.8%)	688.00
WCU	447.00	(13.00)	(2.9%)	434.00
WSSU	190.00	0.00	0.0%	190.00
UNCA	220.00	0.00	0.0%	220.00
ECSU	0.00	0.00	0.0%	0.00
UNCSA	200.00	0.00	0.0%	200.00



The University of North Carolina

53

## ***Average Proposed Undergraduate General Fee Increases***

<b>2006-07</b>	<b>8.6%</b>
<b>2007-08</b>	<b>6.9%</b>
<b>2008-09</b>	<b>4.5%</b>
<b>2009-10</b>	<b>6.1%</b>
<b>2010-11</b>	<b>4.5%</b>

*Note: Percentages do not include debt service fees.*



The University of North Carolina

54

## *Resident Undergraduate Proposed Tuition & Fee Increases for 2010-11*

Institution	2009-10 Tuition	2010-11 Proposed Tuition Increases		2009-10 General Fees	2010-11 Proposed Gen. Fee Increases		2009-10 Debt Service Fee	2010-11 Proposed Debt Service Change
		%	\$		%	\$		
NCSU	\$3,953.00	3.8%	150	\$1,206.00	1.2%	\$ 14.30	\$ 237.00	\$ 83.00
UNC-CH	3,865.00	5.2%	200	1,404.66	4.7%	65.98	180.50	27.35
ECU	2,491.00	3.6%	90	1,481.00	4.7%	70.00	318.00	-
NCA&T	1,994.00	5.5%	110	1,444.75	6.5%	93.25	161.00	-
UNCC	2,516.00	4.1%	103	1,475.00	4.1%	60.00	365.00	120.00
UNCG	2,590.00	6.5%	168	1,324.00	6.5%	86.00	272.00	-
ASU	2,341.00	6.5%	152	1,681.00	1.8%	30.00	402.00	100.00
FSU	1,905.00	6.5%	124	1,152.00	6.5%	75.00	95.00	-
NCCU	2,264.00	5.0%	113	1,477.21	4.8%	70.21	120.00	-
UNCP	2,060.00	5.5%	113	1,425.00	2.9%	41.00	170.00	-
UNCW	2,565.00	2.0%	52	1,599.80	0.4%	5.60	708.00	(20.00)
WCU	2,106.00	6.5%	137	1,661.00	6.4%	106.50	447.00	(13.00)
WSSU	1,769.00	6.5%	115	1,512.16	2.7%	41.00	190.00	-
UNCA	2,389.00	6.5%	155	1,719.85	6.5%	111.65	220.00	-
ECSU	1,681.00	6.5%	109	1,350.00	6.3%	85.10	-	-
UNCSA	3,357.00	6.0%	200	1,670.00	6.4%	107.00	200.00	-
<b>Average Increase</b>		<b>5.2%</b>	<b>131</b>		<b>4.5%</b>	<b>\$66.41</b>		



The University of North Carolina

55

## *Resident Undergraduate Proposed Tuition & Fee Increases for 2010-11*

Institution	2009-10 Tuition & General Fees (without debt serv.)	Proposed for 2010-11			2010-11 Proposed Tuition & Fees (without debt serv.)	% Increase over 2009-10	2010-11 Proposed Tuition & Fees (with debt serv.)	% Increase over 2009-10
		Tuition Increases	Gen. Fee Increases	Debt Serv. Fee				
NCSU	\$5,159.00	\$150.00	\$14.30	\$320.00	\$5,323.30	3.2%	\$5,643.30	4.6%
UNC-CH	5,269.66	200.00	65.98	180.50	5,535.64	5.0%	5,743.49	5.4%
ECU	3,972.00	90.00	70.00	318.00	4,132.00	4.0%	4,450.00	3.7%
NCA&T	3,438.75	110.00	93.25	161.00	3,642.00	5.9%	3,803.00	5.6%
UNCC	3,991.00	103.00	60.00	365.00	4,154.00	4.1%	4,639.00	6.5%
UNCG	3,914.00	168.00	86.00	272.00	4,168.00	6.5%	4,440.00	6.1%
ASU	4,022.00	152.00	30.00	402.00	4,204.00	4.5%	4,706.00	6.4%
FSU	3,057.00	124.00	75.00	95.00	3,256.00	6.5%	3,351.00	6.3%
NCCU	3,741.21	113.00	70.21	120.00	3,924.42	4.9%	4,044.42	4.7%
UNCP	3,485.00	113.00	41.00	170.00	3,639.00	4.4%	3,809.00	4.2%
UNCW	4,164.80	52.00	5.60	708.00	4,222.40	1.4%	4,910.40	0.8%
WCU	3,767.00	137.00	106.50	447.00	4,010.50	6.5%	4,444.50	5.5%
WSSU	3,281.16	115.00	41.00	190.00	3,437.16	4.8%	3,627.16	4.5%
UNCA	4,108.85	155.00	111.65	220.00	4,375.50	6.5%	4,595.50	6.2%
ECSU	3,031.00	109.00	85.10	-	3,225.10	6.4%	3,225.10	6.4%
UNCSA	5,027.00	200.00	107.00	200.00	5,334.00	6.1%	5,534.00	5.9%
<b>Avg. Increase</b>						<b>5.0%</b>		<b>5.1%</b>



The University of North Carolina

56

## ***Tuition and Fees – BOG Four-Year Plan***

---

- After the proposed increases for 2010-11, the combined tuition and fee rates for resident undergraduates on every campus would remain within the bottom quarter of each campus' public peers.
- Combined rates for nonresident undergraduate students would remain below the top quarter of the same approved peer groups.
- By any measure, UNC campuses provide a quality education at an affordable price.



The University of North Carolina

