

ERP/Finance Transformation Project

Since last month's meeting of the Audit Committee, orientation meetings have been held with both the Executive Steering Committee and the Campus Project Managers. The project management governance and organization structure have been further developed and additional team members added (see attached). Process Advisory Committees (subject matter experts) are working aggressively, adding valuable input in each of the process areas.

Short-term improvements (standards, checklists, templates and performance indicators) in the Contracts and Grants process area have been developed, pressure tested with several campuses and implementation visits are scheduled to begin the third week in January. Work in the Financial Aid area has begun in earnest, following the same approach as Contracts and Grants. Development work in the General Accounting process area has just started, while remedial work (data analysis and cleansing) continues at several of the campuses.

A focused business case analysis detailing alternatives for HR/Payroll processing and ultimately recommending a solution for the nine UNC campuses to migrate off of the State's Central Payroll system is well underway, with a recommendation and decision by the Executive Steering Committee targeted for January 2009. Development of long-term plans for an overall shared services design will follow the HR/Payroll analysis.

The project is on target to have short-term improvements developed and rolled out to the campuses by the end of April 2009, provide monitoring and assistance during May and June with all campuses consistently reporting by July 1st. Operational strategy and long-term design for a shared services environment is also on target to be completed by fiscal year end.

ERP – Finance Transformation Project Governance

Specific structure has been put in place to ensure proper project support and execution...

Project Executive Steering Committee

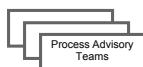
- Defines the vision and strategic direction for the project
- Provides executive and organizational support for project efforts
- Reviews and approves major project decisions
- Serves as overall project oversight group and evaluates progress against goals

Program Management Office

- Provides operational guidance and managerial structure to the project
- Ensures individual process team approaches are integrated and consistent
- Manages top-down and bottom-up project communication routines including status reporting process
- Serves as overall project administrator

Campus Project Managers

- Serves as the primary point of contact and project champion for respective campus
- Coordinates and communicates project activities with campus teams
- Monitors campus progress and provides valued project feedback



- Provides specific subject matter knowledge and guidance for in scope processes
- Validates the content of process-specific project outputs

Page 1

ERP – Finance Transformation Project Teams

Executive Steering Committee

- ▶ Jeff Davies, Chief of Staff
- ▶ Dr. Donald Reaves, WSSU
- ▶ Dr. Rosemary DePaolo, UNCW
- ▶ Dr. Richard Mann, UNC-CH
- ▶ Chuck Wooten, WCU
- ▶ Robert Gaines, ECSU
- ▶ Dr. Joan Lorden, UNCC
- ▶ Pamela Barkett, UNCP
- ▶ Julie Rice Mallette, NCSU
- ▶ Jeff Williams, ASU

Advisors to Steering Committee

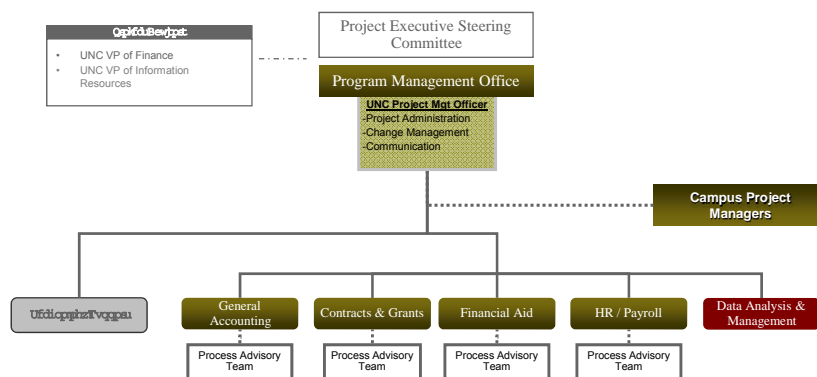
- ▶ Rob Nelson, VP of Finance
- ▶ John Leydon, VP Information Resources

Campus Project Managers

- ▶ Rick Presnell, ASU
- ▶ Anne Jenkins, ECU
- ▶ Robert Gaines, ECSU
- ▶ David Beach, FSU
- ▶ Robert Pompey, NCA&T
- ▶ Alan Robertson, NCCU
- ▶ Ed McBride, NCSSM
- ▶ Ernie Murphrey, NCSU
- ▶ Suzanne Bryson, UNCA
- ▶ Stan Koziol, UNC-CH
- ▶ Phil Maher, UNCC
- ▶ Joanne Jones, UNCG
- ▶ George Guthrie, UNCP
- ▶ Carin Ioannou, UNCSA
- ▶ Carol Strickland, UNCW
- ▶ Jeanine Newman, WCU
- ▶ Delores Turner, WSSU

Page 2

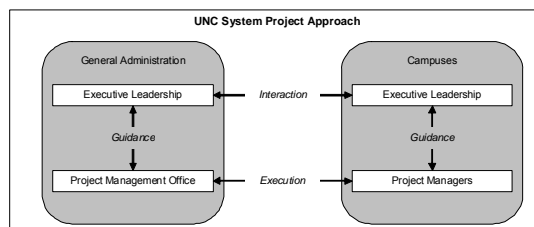
ERP - Finance Transformation Project Organization



Page 3

ERP - Finance Transformation Campus Project Manager Role

- ▶ Serve as the primary GA point of contact and project champion for respective campus
- ▶ Coordinate and communicate project activities with campus teams
- ▶ Route information requests to the appropriate personnel and ensure campus access for GA team
- ▶ Monitor campus progress and provide valued project feedback
- ▶ Participate in monthly project conference calls



Page 4