

Enrollment Planning

August 1, 2007



*Dr. Alan Mabe
Vice President
for Academic Planning*

Enrollment Planning

Three Enrollment Projections Models

- **High School Graduates Model**
- **County Diversity Model**
- **Census Model**

Models have been rerun on basis of most current data



Enrollment Planning

Changing Diversity in Recruitment Pools

Identify ten NC counties that provide the most freshmen students to each campus

**Using Projections from County Diversity Model
compare the diversity currently, projected for
2006-2007, and projected for 2016-2017**



Appalachian State University

Enrollment and Changing County Diversity

Race/ Ethnicity	Fall 2006		2005-06		Projected High School Graduates				2007-2017 % Change
	Fr. Enrollment		HS Graduates		2007-2008		2017-2018		
	#	%	#	%	#	%	#	%	
White	1,204	87.2%	18,798	62.4%	18,718	59.6%	20,936	41.7%	11.8%
Black	63	4.6%	8,719	28.9%	9,623	30.6%	12,818	25.5%	33.2%
Am Indian	2	0.1%	89	0.3%	108	0.3%	211	0.4%	95.4%
Asian	21	1.5%	1,084	3.6%	1,169	3.7%	2,469	4.9%	111.2%
Hispanic	34	2.5%	1,429	4.7%	1,794	5.7%	13,759	27.4%	666.9%
Other	57	4.1%	0	0.0%	0	0.0%	0	0.0%	N/A
Total	1,381	100.0%	30,119	100.0%	31,412	100.0%	50,193	100.0%	59.8%

Note: Figures represent summary of 10 counties including Wake, Mecklenburg, Guilford, Forsyth, Watauga, Buncombe, Catawba, Gaston, Union, and Iredell.



East Carolina University

Enrollment and Changing County Diversity

Race/ Ethnicity	Fall 2006		2005-06		Projected High School Graduates				2007-2017 % Change
	Fr. Enrollment		HS Graduates		2007-2008		2017-2018		
	#	%	#	%	#	%	#	%	
White	1,114	72.0%	16,665	54.7%	16,173	51.5%	16,960	36.5%	4.9%
Black	276	17.8%	11,221	36.8%	12,110	38.6%	15,335	33.0%	26.6%
Am Indian	10	0.6%	132	0.4%	154	0.5%	220	0.5%	42.9%
Asian	47	3.0%	1,015	3.3%	1,068	3.4%	2,234	4.8%	109.2%
Hispanic	34	2.2%	1,442	4.7%	1,888	6.0%	11,700	25.2%	519.7%
Other	66	4.3%	0	0.0%	0	0.0%	0	0.0%	N/A
Total	1,547	100.0%	30,475	100.0%	31,393	100.0%	46,449	100.0%	48.0%

Note: Figures represent summary of 10 counties including Wake, Pitt, Cumberland, Guilford, Mecklenburg, Onslow, Nash, Wilson, Forsyth, and New Hanover.



The University of North Carolina General Administration

UNC-GA IRA/EnrDiv.UG001/2-21-07

Elizabeth City State University

Enrollment and Changing County Diversity

Race/ Ethnicity	Fall 2006		2005-06		Projected High School Graduates				2007-2017 % Change
	Fr. Enrollment		HS Graduates		2007-2008		2017-2018		
	#	%	#	%	#	%	#	%	
White	30	13.0%	9,038	52.6%	9,064	50.3%	10,349	34.9%	14.2%
Black	189	82.2%	6,574	38.3%	7,056	39.2%	9,492	32.0%	34.5%
Am Indian	0	0.0%	73	0.4%	82	0.5%	110	0.4%	34.1%
Asian	2	0.9%	664	3.9%	712	4.0%	1,594	5.4%	123.9%
Hispanic	5	2.2%	827	4.8%	1,091	6.1%	8,142	27.4%	646.3%
Other	4	1.7%	0	0.0%	0	0.0%	0	0.0%	N/A
Total	230	100.0%	17,176	100.0%	18,005	100.0%	29,687	100.0%	64.9%

Note: Figures represent summary of 10 counties including Pasquotank, Washington, Mecklenburg, Bertie, Wake, Halifax, Hertford, Camden, Wilson, and Nash.



Fayetteville State University

Enrollment and Changing County Diversity

Race/ Ethnicity	Fall 2006		2005-06		Projected High School Graduates				2007-2017 % Change
	Fr. Enrollment		HS Graduates		2007-2008		2017-2018		
	#	%	#	%	#	%	#	%	
White	45	8.8%	11,882	49.9%	11,446	46.8%	12,102	32.3%	5.7%
Black	392	76.3%	9,244	38.8%	9,925	40.6%	12,557	33.5%	26.5%
Am Indian	4	0.8%	625	2.6%	655	2.7%	724	1.9%	10.5%
Asian	6	1.2%	814	3.4%	824	3.4%	1,851	4.9%	124.6%
Hispanic	35	6.8%	1,235	5.2%	1,615	6.6%	10,230	27.3%	533.4%
Other	32	6.2%	0	0.0%	0	0.0%	0	0.0%	N/A
Total	514	100.0%	23,800	100.0%	24,465	100.0%	37,464	100.0%	53.1%

Note: Figures represent summary of 10 counties including Cumberland, Mecklenburg, Wake, Robeson, Hoke, Halifax, Sampson, Durham, Harnett, and Nash.



NC A&T State University

Enrollment and Changing County Diversity

Race/ Ethnicity	Fall 2006		2005-06		Projected High School Graduates				2007-2017 % Change
	Fr. Enrollment		HS Graduates		2007-2008		2017-2018		
	#	%	#	%	#	%	#	%	
White	29	2.6%	16,043	52.4%	15,595	49.4%	16,012	34.4%	2.7%
Black	1,054	94.8%	11,876	38.8%	12,777	40.5%	15,903	34.2%	24.5%
Am Indian	2	0.2%	145	0.5%	158	0.5%	218	0.5%	38.0%
Asian	7	0.6%	1,042	3.4%	1,087	3.4%	2,235	4.8%	105.6%
Hispanic	9	0.8%	1,493	4.9%	1,927	6.1%	12,140	26.1%	530.0%
Other	11	1.0%	0	0.0%	0	0.0%	0	0.0%	N/A
Total	1,112	100.0%	30,599	100.0%	31,544	100.0%	46,508	100.0%	47.4%

Note: Figures represent summary of 10 counties including Guilford, Mecklenburg, Wake, Forsyth, Durham, Cumberland, Pitt, Halifax, Nash and Onslow.



The University of North Carolina General Administration

North Carolina Central University

Enrollment and Changing County Diversity

Race/ Ethnicity	Fall 2006		2005-06		Projected High School Graduates				2007-2017 % Change
	Fr. Enrollment		HS Graduates		2007-2008		2017-2018		
	#	%	#	%	#	%	#	%	
White	16	3.1%	16,147	54.4%	15,846	51.3%	16,029	35.0%	1.2%
Black	429	84.4%	10,792	36.3%	11,824	38.3%	14,726	32.2%	24.5%
Am Indian	2	0.4%	138	0.5%	149	0.5%	225	0.5%	51.0%
Asian	2	0.4%	1,094	3.7%	1,129	3.7%	2,370	5.2%	109.9%
Hispanic	6	1.2%	1,523	5.1%	1,930	6.3%	12,389	27.1%	541.9%
Other	53	10.4%	0	0.0%	0	0.0%	0	0.0%	N/A
Total	508	100.0%	29,694	100.0%	30,878	100.0%	45,739	100.0%	48.1%

Note: Figures represent summary of 10 counties including Durham, Mecklenburg, Wake, Cumberland, Guilford, Forsyth, Orange, Randolph, Halifax, and Beaufort.



The University of North Carolina General Administration

North Carolina School of the Arts

Enrollment and Changing County Diversity

Race/ Ethnicity	Fall 2006		2005-06		Projected High School Graduates				2007-2017 % Change
	Fr. Enrollment		HS Graduates		2007-2008		2017-2018		
	#	%	#	%	#	%	#	%	
White	39	90.7%	17,332	56.2%	17,108	53.1%	18,537	37.7%	8.4%
Black	3	7.0%	10,670	34.6%	11,808	36.6%	14,920	30.4%	26.4%
Am Indian	0	0.0%	123	0.4%	146	0.5%	235	0.5%	61.0%
Asian	1	2.3%	1,189	3.9%	1,231	3.8%	2,598	5.3%	111.0%
Hispanic	0	0.0%	1,543	5.0%	1,948	6.0%	12,836	26.1%	558.9%
Other	0	0.0%	0	0.0%	0	0.0%	0	0.0%	N/A
Total	43	100.0%	30,857	100.0%	32,241	100.0%	49,126	100.0%	52.4%

Note: Figures represent summary of 10 counties including Forsyth, Mecklenburg, Wake, Guilford, Orange, Cumberland, Durham, Moore, Union, and Burke.



North Carolina State University

Enrollment and Changing County Diversity

Race/ Ethnicity	Fall 2006		2005-06		Projected High School Graduates				2007-2017 % Change
	Fr. Enrollment		HS Graduates		2007-2008		2017-2018		
	#	%	#	%	#	%	#	%	
White	1,764	76.2%	18,745	57.1%	18,413	54.0%	19,953	38.0%	8.4%
Black	210	9.1%	11,231	34.2%	12,329	36.1%	15,554	29.6%	26.2%
Am Indian	7	0.3%	127	0.4%	158	0.5%	238	0.5%	50.6%
Asian	166	7.2%	1,152	3.5%	1,187	3.5%	2,586	4.9%	117.9%
Hispanic	74	3.2%	1,591	4.8%	2,039	6.0%	14,192	27.0%	596.0%
Other	94	4.1%	0	0.0%	0	0.0%	0	0.0%	N/A
Total	2,315	100.0%	32,846	100.0%	34,126	100.0%	52,523	100.0%	53.9%

Note: Figures represent summary of 10 counties including Wake, Mecklenburg, Guilford, Orange, Forsyth, Cumberland, New Hanover, Union, Gaston, and Orange.



UNC at Asheville

Enrollment and Changing County Diversity

Race/ Ethnicity	Fall 2006		2005-06		Projected High School Graduates				2007-2017 % Change
	Fr. Enrollment		HS Graduates		2007-2008		2017-2018		
	#	%	#	%	#	%	#	%	
White	268	88.4%	16,882	59.0%	16,491	55.8%	16,922	37.4%	2.6%
Black	9	3.0%	9,195	32.2%	10,119	34.3%	13,093	28.9%	29.4%
Am Indian	0	0.0%	89	0.3%	100	0.3%	169	0.4%	69.0%
Asian	4	1.3%	1,020	3.6%	1,078	3.7%	2,386	5.3%	121.3%
Hispanic	3	1.0%	1,405	4.9%	1,744	5.9%	12,683	28.0%	627.2%
Other	19	6.3%	0	0.0%	0	0.0%	0	0.0%	N/A
Total	303	100.0%	28,591	100.0%	29,532	100.0%	45,253	100.0%	53.2%

Note: Figures represent summary of 10 counties including Buncombe, Mecklenburg, Wake, Orange, Henderson, Durham, Forsyth, Guilford, Harnett, and Caldwell.



UNC at Chapel Hill

Enrollment and Changing County Diversity

Race/ Ethnicity	Fall 2006 Fr. Enrollment		2005-06 HS Graduates		Projected High School Graduates				2007-2017 % Change
					2007-2008		2017-2018		
	#	%	#	%	#	%	#	%	
White	1,426	69.9%	18,067	56.3%	17,540	52.9%	17,956	36.4%	2.4%
Black	230	11.3%	11,267	35.1%	12,336	37.2%	15,499	31.4%	25.6%
Am Indian	10	0.5%	129	0.4%	152	0.5%	229	0.5%	50.7%
Asian	203	10.0%	1,132	3.5%	1,145	3.5%	2,484	5.0%	116.9%
Hispanic	86	4.2%	1,522	4.7%	1,961	5.9%	13,159	26.7%	571.0%
Other	85	4.2%	0	0.0%	0	0.0%	0	0.0%	N/A
Total	2,040	100.0%	32,117	100.0%	33,134	100.0%	49,327	100.0%	48.9%

Note: Figures represent summary of 10 counties including Wake, Mecklenburg, Guilford, Orange, Forsyth, Durham, Cumberland, New Hanover, Pitt, and Buncombe.



UNC at Charlotte

Enrollment and Changing County Diversity

Race/ Ethnicity	Fall 2006		2005-06		Projected High School Graduates				2007-2017 % Change
	Fr. Enrollment		HS Graduates		2007-2008		2017-2018		
	#	%	#	%	#	%	#	%	
White	1,297	79.0%	19,364	59.4%	19,246	56.6%	21,592	40.5%	12.2%
Black	190	11.6%	10,449	32.0%	11,465	33.7%	15,039	28.2%	31.2%
Am Indian	4	0.2%	127	0.4%	152	0.4%	246	0.5%	61.8%
Asian	85	5.2%	1,077	3.3%	1,139	3.3%	2,538	4.8%	122.8%
Hispanic	66	4.0%	1,606	4.9%	2,030	6.0%	13,860	26.0%	582.8%
Other	0	0.0%	0	0.0%	0	0.0%	0	0.0%	N/A
Total	1,642	100.0%	32,623	100.0%	34,032	100.0%	53,275	100.0%	56.5%

Note: Figures represent summary of 10 counties including Mecklenburg, Union, Wake, Cabarrus, Guilford, Forsyth, Iredell, Gaston, Cumberland, and Rowan.



UNC at Greensboro

Enrollment and Changing County Diversity

Race/ Ethnicity	Fall 2006		2005-06		Projected High School Graduates				2007-2017 % Change
	Fr. Enrollment		HS Graduates		2007-2008		2017-2018		
	#	%	#	%	#	%	#	%	
White	882	66.1%	17,393	56.0%	17,014	52.8%	17,047	35.9%	0.2%
Black	291	21.8%	10,807	34.8%	11,896	36.9%	14,895	31.4%	25.2%
Am Indian	7	0.5%	128	0.4%	139	0.4%	227	0.5%	63.3%
Asian	53	4.0%	1,122	3.6%	1,162	3.6%	2,388	5.0%	105.5%
Hispanic	28	2.1%	1,632	5.3%	2,028	6.3%	12,881	27.2%	535.2%
Other	73	5.5%	0	0.0%	0	0.0%	0	0.0%	N/A
Total	1,334	100.0%	31,082	100.0%	32,239	100.0%	47,438	100.0%	47.1%

Note: Figures represent summary of 10 counties including Guilford, Wake, Forsyth, Mecklenburg, Alamance, Durham, Orange, Randolph, Rockingham, and Cumberland.



UNC at Pembroke

Enrollment and Changing County Diversity

Race/ Ethnicity	Fall 2006		2005-06		Projected High School Graduates				2007-2017 % Change
	Fr. Enrollment		HS Graduates		2007-2008		2017-2018		
	#	%	#	%	#	%	#	%	
White	244	39.8%	14,587	54.0%	14,362	50.7%	16,275	36.9%	13.3%
Black	152	24.8%	9,506	35.2%	10,520	37.1%	13,750	31.2%	30.7%
Am Indian	129	21.0%	658	2.4%	738	2.6%	801	1.8%	8.5%
Asian	19	3.1%	960	3.6%	1,024	3.6%	2,229	5.1%	117.7%
Hispanic	28	4.6%	1,310	4.8%	1,705	6.0%	11,052	25.1%	548.2%
Other	41	6.7%	0	0.0%	0	0.0%	0	0.0%	N/A
Total	613	100.0%	27,021	100.0%	28,349	100.0%	44,107	100.0%	55.6%

Note: Figures represent summary of 10 counties including Robeson, Cumberland, Wake, Mecklenburg, Guilford, Scotland, Hoke, Onslow, Union, and Columbus.



UNC at Wilmington

Enrollment and Changing County Diversity

Race/ Ethnicity	Fall 2006		2005-06		Projected High School Graduates				2007-2017 % Change
	Fr. Enrollment		HS Graduates		2007-2008		2017-2018		
	#	%	#	%	#	%	#	%	
White	718	81.3%	18,241	56.3%	17,974	53.2%	20,296	38.6%	12.9%
Black	61	6.9%	11,317	35.0%	12,407	36.7%	15,795	30.0%	27.3%
Am Indian	4	0.5%	132	0.4%	161	0.5%	250	0.5%	55.3%
Asian	20	2.3%	1,063	3.3%	1,108	3.3%	2,402	4.6%	116.8%
Hispanic	32	3.6%	1,627	5.0%	2,119	6.3%	13,822	26.3%	552.3%
Other	48	5.4%	0	0.0%	0	0.0%	0	0.0%	N/A
Total	883	100.0%	32,380	100.0%	33,769	100.0%	52,565	100.0%	55.7%

Note: Figures represent summary of 10 counties including Wake, New Hanover, Mecklenburg, Guilford, Forsyth, Onslow, Cumberland, Durham, Union, and Johnston.



Western Carolina University

Enrollment and Changing County Diversity

Race/ Ethnicity	Fall 2006		2005-06		Projected High School Graduates				2007-2017 % Change
	Fr. Enrollment		HS Graduates		2007-2008		2017-2018		
	#	%	#	%	#	%	#	%	
White	658	85.9%	16,608	63.0%	16,486	59.8%	18,430	40.8%	11.8%
Black	50	6.5%	7,446	28.3%	8,318	30.2%	11,571	25.6%	39.1%
Am Indian	4	0.5%	87	0.3%	114	0.4%	209	0.5%	83.3%
Asian	7	0.9%	1,006	3.8%	1,090	4.0%	2,238	5.0%	105.3%
Hispanic	12	1.6%	1,207	4.6%	1,556	5.6%	12,732	28.2%	718.3%
Other	35	4.6%	0	0.0%	0	0.0%	0	0.0%	N/A
Total	766	100.0%	26,354	100.0%	27,564	100.0%	45,180	100.0%	63.9%

Note: Figures represent summary of 10 counties including Mecklenburg, Wake, Buncombe, Haywood, Guilford, Jackson, Gaston, Union, Catawba, and Macon.



Winston-Salem State University

Enrollment and Changing County Diversity

Race/ Ethnicity	Fall 2006		2005-06		Projected High School Graduates				2007-2017 % Change
	Fr. Enrollment		HS Graduates		2007-2008		2017-2018		
	#	%	#	%	#	%	#	%	
White	19	3.5%	18,256	56.4%	17,832	53.2%	18,322	36.2%	2.7%
Black	500	91.9%	11,320	34.9%	12,381	36.9%	15,711	31.0%	26.9%
Am Indian	1	0.2%	126	0.4%	142	0.4%	213	0.4%	50.0%
Asian	3	0.6%	1,084	3.3%	1,135	3.4%	2,375	4.7%	109.3%
Hispanic	5	0.9%	1,608	5.0%	2,037	6.1%	14,027	27.7%	588.6%
Other	16	2.9%	0	0.0%	0	0.0%	0	0.0%	N/A
Total	544	100.0%	32,394	100.0%	33,527	100.0%	50,648	100.0%	51.1%

Note: Figures represent summary of 10 counties including Mecklenburg, Forsyth, Guilford, Wake, Durham, Cumberland, Cabarrus, Gaston, Alamance, and Cleveland.



University of North Carolina System

Enrollment and Changing Diversity for Top 10 Counties

Race/ Ethnicity	Fall 2006		2005-06		Projected High School Graduates				2007-2017 % Change
	Fr. Enrollment		HS Graduates		2007-2008		2017-2018		
	#	%	#	%	#	%	#	%	
White	8,636	61.8%	18,737	57.5%	18,390	54.3%	20,014	38.5%	8.8%
Black	3,665	26.2%	10,978	33.7%	12,126	35.8%	15,332	29.5%	26.4%
Am Indian	57	0.4%	130	0.4%	160	0.5%	243	0.5%	51.9%
Asian	611	4.4%	1,138	3.5%	1,158	3.4%	2,620	5.0%	126.3%
Hispanic	407	2.9%	1,583	4.9%	2,024	6.0%	13,848	26.6%	584.2%
Other	589	4.2%	0	0.0%	0	0.0%	0	0.0%	N/A
Total	13,965	100.0%	32,566	100.0%	33,858	100.0%	52,057	100.0%	53.8%

Note: Figures represent summary of 10 counties including Wake, Mecklenburg, Guilford, Forsyth, Cumberland, Durham, Orange, Union, New Hanover, and Buncombe.



Percent of Fall 2006 UNC In-State First-Time Freshmen from Top 10 Counties

Institution	Percent (%)	Institution	Percent (%)
ASU	56.8%	UNCA	61.8%
ECU	54.0%	UNC-CH	63.7%
ECSU	52.5%	UNCC	67.2%
FSU	66.8%	UNCG	61.5%
NCA&T	66.6%	UNCP	68.9%
NCCU	63.8%	UNCW	57.0%
NCSA	61.4%	WCU	52.5%
NCSU	54.1%	WSSU	61.1%

UNC Total 52.9%



University of North Carolina System

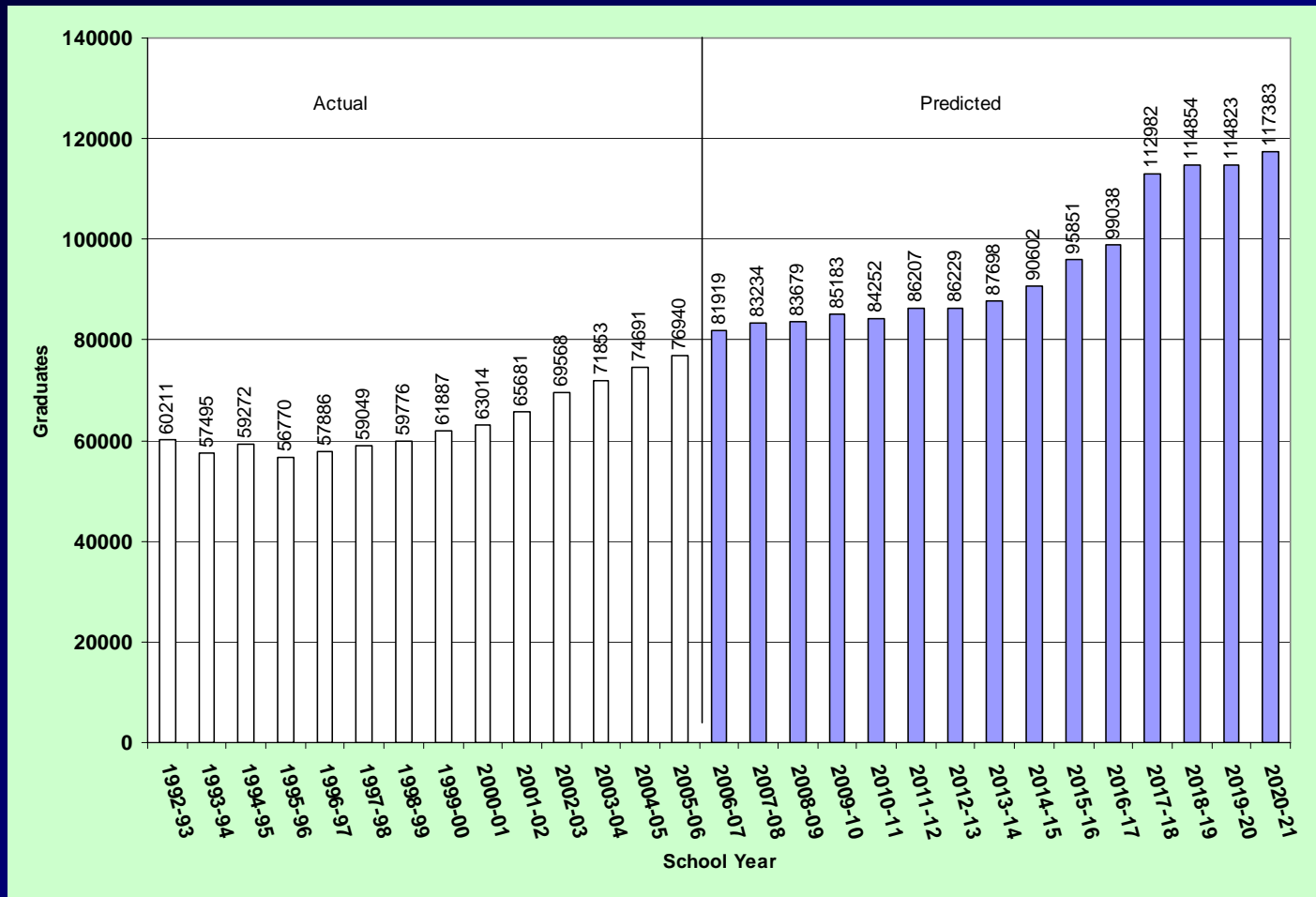
Enrollment and Changing Diversity for the State

Race/ Ethnicity	Fall 2006		2005-06		Projected High School Graduates				2007-2017 % Change
	Fr. Enrollment		HS Graduates		2007-2008		2017-2018		
	#	%	#	%	#	%	#	%	
White	17,204	64.3%	49,223	64.0%	51,210	61.5%	53,323	47.2%	4.1%
Black	6,778	25.3%	20,836	27.1%	24,618	29.6%	27,864	24.7%	13.2%
Am Indian	277	1.0%	831	1.1%	1,017	1.2%	1,387	1.2%	36.4%
Asian	872	3.3%	1,728	2.2%	1,951	2.3%	4,256	3.8%	118.1%
Hispanic	665	2.5%	3,188	4.1%	4,438	5.3%	26,152	23.1%	489.3%
Other	968	3.6%	1,134	1.5%	0	0.0%	0	0.0%	N/A
Total	26,764	100.0%	76,940	100.0%	83,234	100.0%	112,982	100.0%	35.7%

Note: Freshmen enrollment figures represent students from the state. High school graduates and projected graduates are for public schools only.



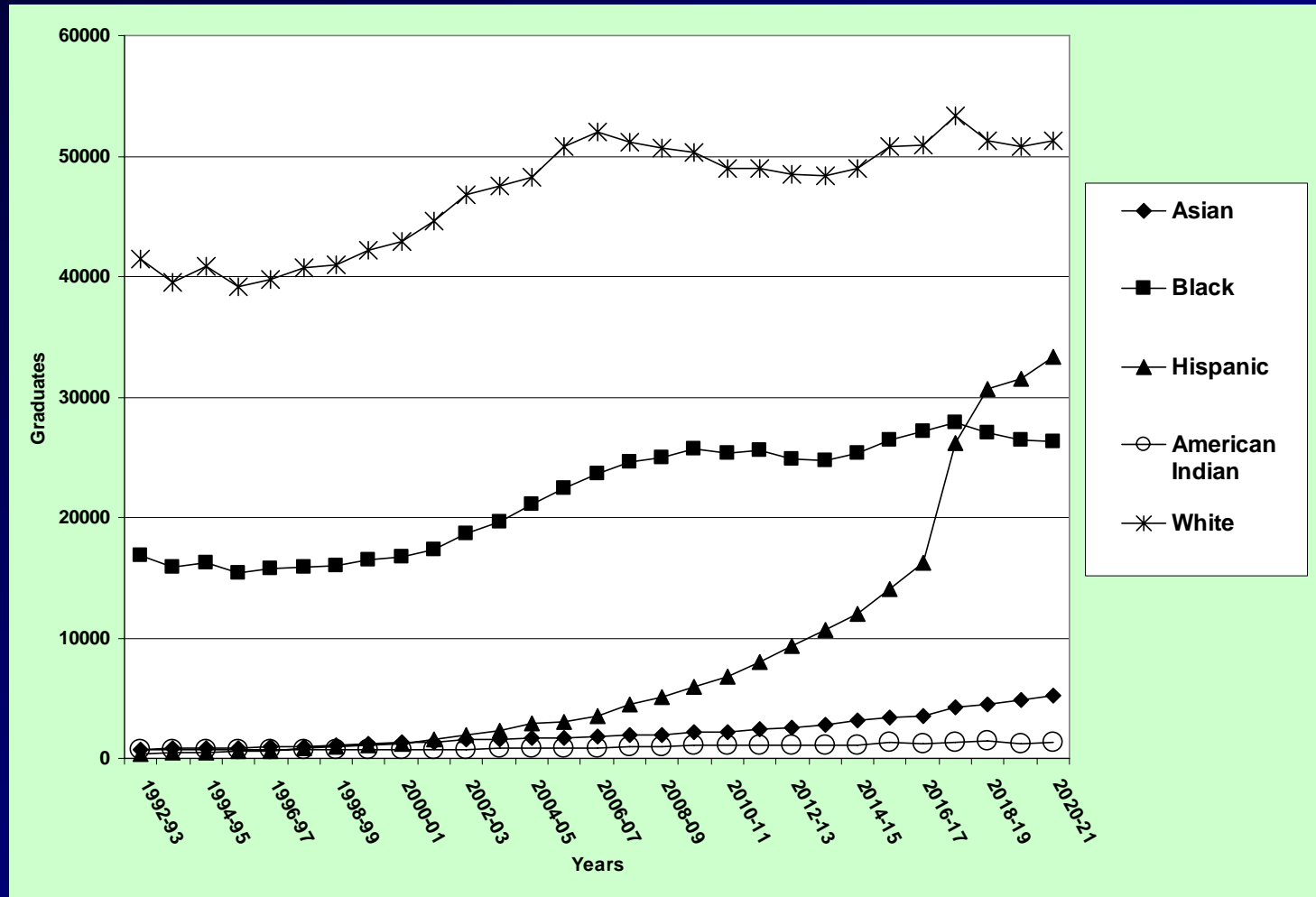
NC Public High School Graduates



The University of North Carolina General Administration

UNC-GA IRA/EnrDiv.UG001/10-2-07

Current and Projected Public High School Graduates

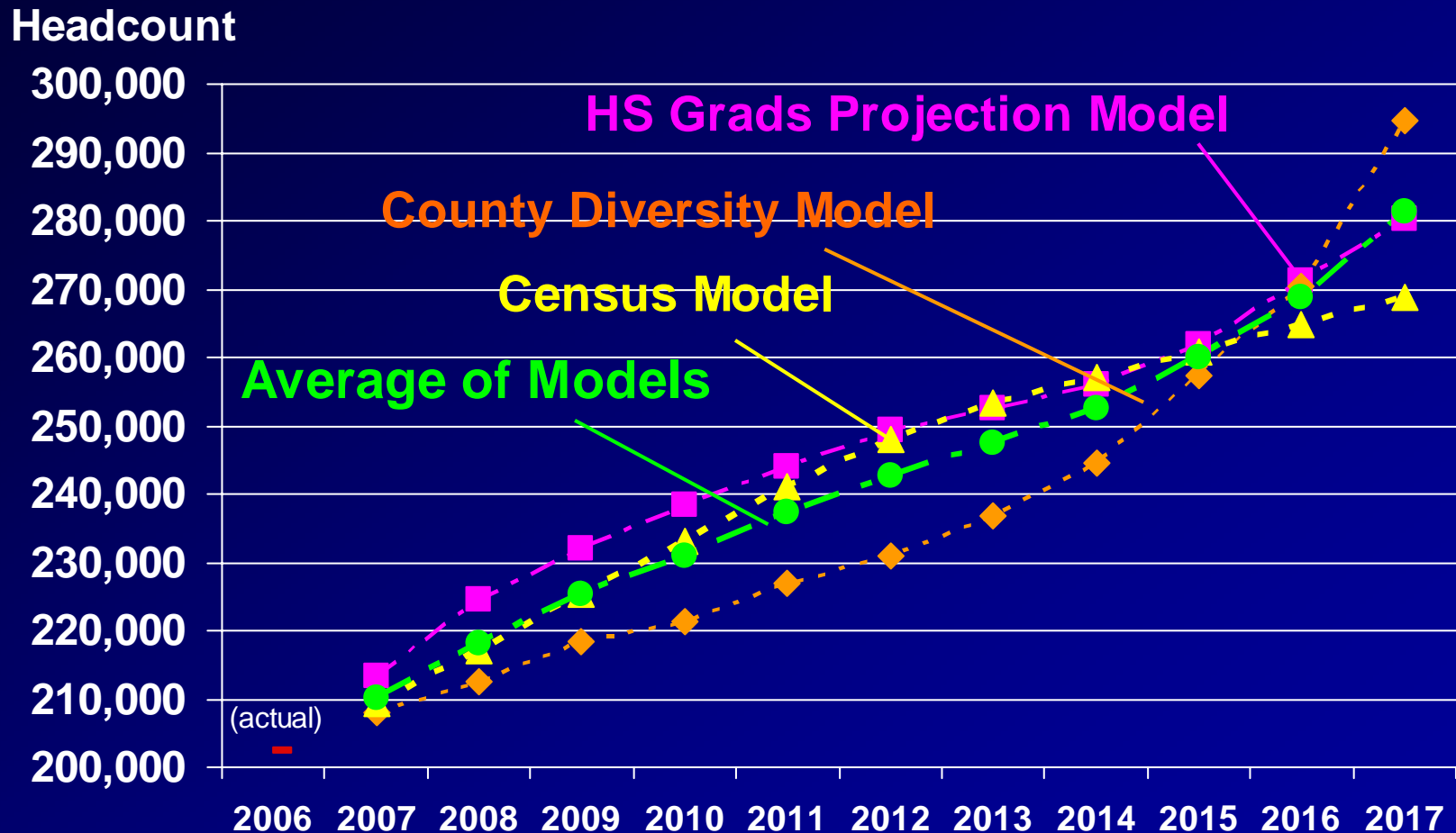


The University of North Carolina General Administration

UNC-GA IRA/EnrDiv.UG001/2-19-07

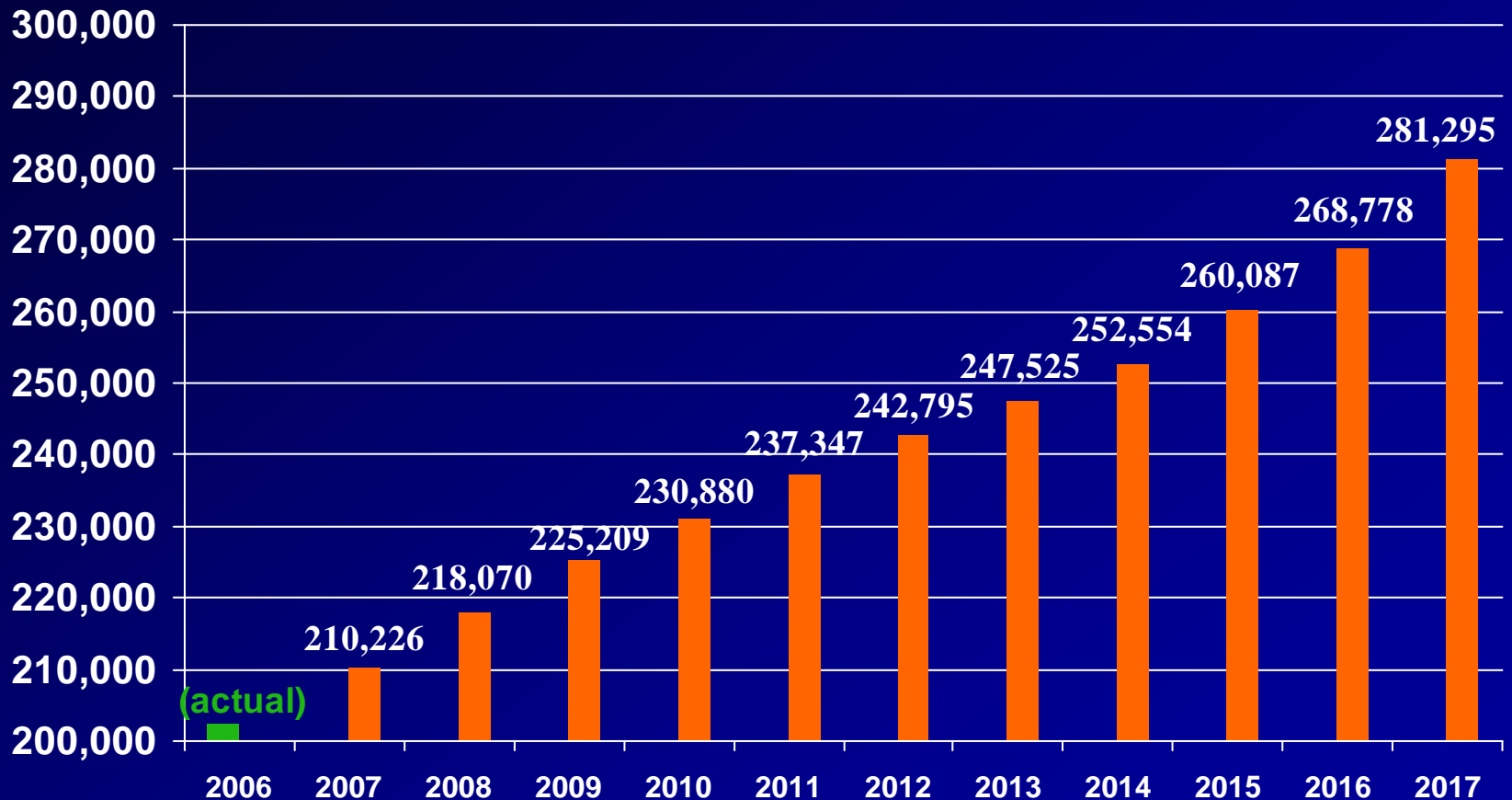
Relation of the Models

(Total Projected Demand to 2017)



Projection of Enrollment Demand for UNC: Three-Model Average

Headcount



Projected UNC Enrollment for Fall 2017

Average of Projection Models

Institution	Enrollment	Institution	Enrollment
ASU	18,498	UNCA	4,558
ECU	33,195	UNC-CH	35,311
ECSU	3,978	UNCC	29,524
FSU	9,833	UNCG	24,165
NCA&T	14,641	UNCP	9,485
NCCU	13,513	UNCW	15,744
NCSA	1,091	WCU	17,228
NCSU	40,517	WSSU	10,014

UNC Total 281,295



Response

Some options to consider:

- **Expand UNC campuses to accommodate growth**
- **Plan for more high school graduates to go to CCs**
- **Establish multiple branch campuses**
- **Educate some students entirely on line**
- **Provide some part of some, most, all students' education online**
- **Provide portion (all) of first two years online in high school**
- **Build /access higher education centers around the State that each campus could use for delivery**
- **Develop full-funded summer session**
- **Develop other options**

